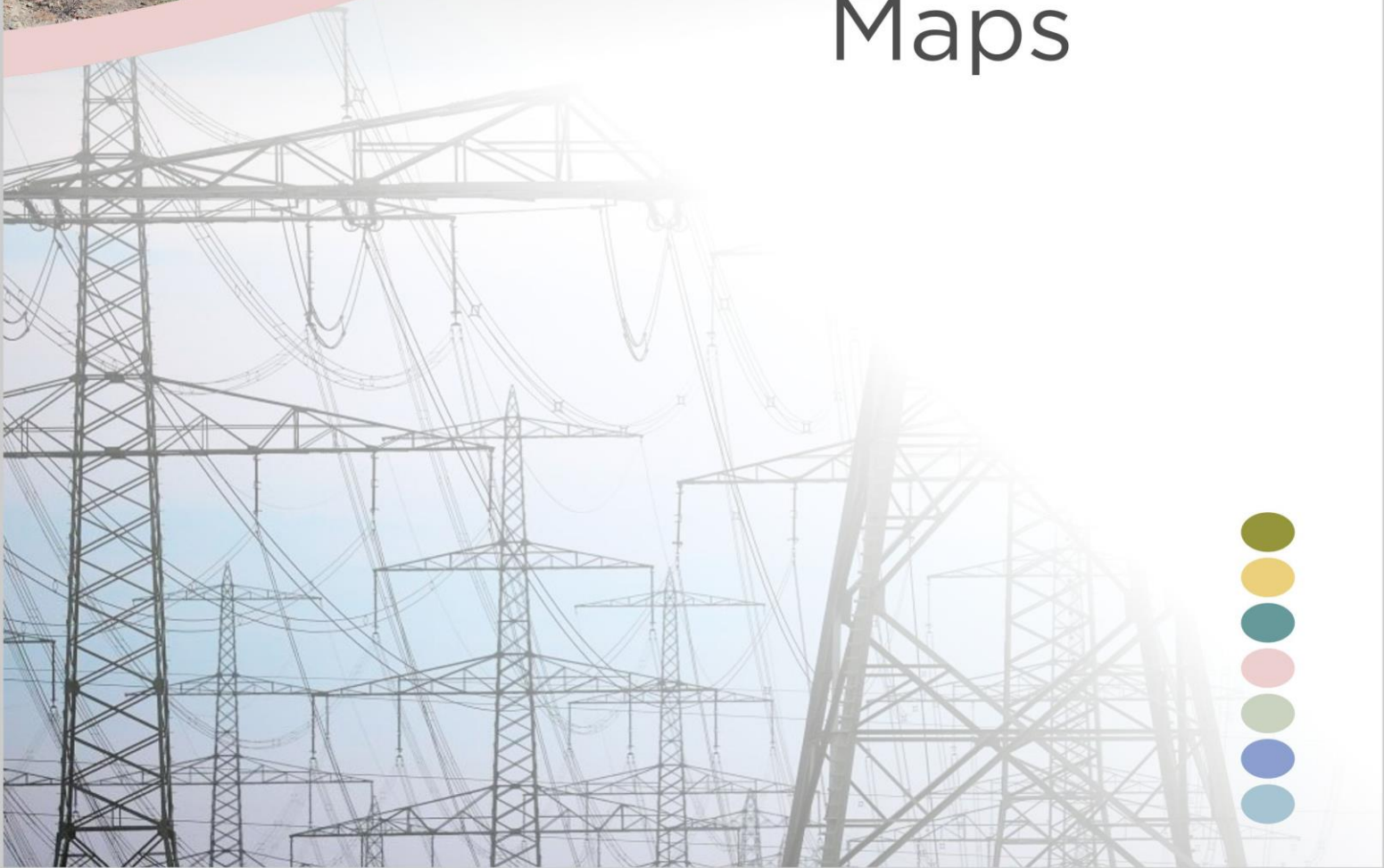


DRAFT BASIC ASSESSMENT REPORT

APPENDIX C



Maps



CONTENTS

C. 1: Proposed 132 kV overhead powerline routing	1
C. 2: Environmental Sensitivity Maps	3

FIGURES

Figure C.1: Locality of the seven proposed 132 kV overhead transmission powerline projects situated south of Beaufort West in the Western Cape	1
Figure C.2: The proposed Kwagga EGI Section 6 of the 132 kV overhead powerline corridor, which extends between the proposed authorised on-site substation hubs at the Kwagga WEF 3 site and the Kwagga WEF 1 site	2
Figure C.3: Civil Aviation Features relative to the seven proposed 132 kV overhead transmission powerline projects site based on the	3
Figure C.4: Defence Features relative to the seven proposed 132 kV overhead transmission powerline projects site based on the	4
Figure C.5: Combined environmental sensitivity map for the proposed 132 kV overhead powerline i.e. Section 6 of the Kwagga EGI corridor, which extends between the proposed authorised on-site substation hubs at the Kwagga WEF 3 site and the Kwagga WEF 1 site	5
Figure C.6: Environmental features map for the proposed 132 kV overhead powerline i.e. Section 6 of the Kwagga EGI corridor, which extends between the proposed authorised on-site substation hubs at the Kwagga WEF 3 site and the Kwagga WEF 1 site	6
Figure C.7: Visual sensitivity map for the proposed 132 kV overhead powerline i.e. Section 6 of the Kwagga EGI corridor, which extends between the proposed authorised on-site substation hubs at the Kwagga WEF 3 site and the Kwagga WEF 1 site	7
Figure C.8: Avifauna sensitivity map for the proposed 132 kV overhead powerline i.e. Section 6 of the Kwagga EGI corridor, which extends between the proposed authorised on-site substation hubs at the Kwagga WEF 3 site and the Kwagga WEF 1 site	8
Figure C.9: Heritage sensitivity map for the proposed 132 kV overhead powerline i.e. Section 6 of the Kwagga EGI corridor, which extends between the proposed authorised on-site substation hubs at the Kwagga WEF 3 site and the Kwagga WEF 1 site	9
Figure C.10: Palaeontological sensitivity map for the proposed 132 kV overhead powerline i.e. Section 6 of the Kwagga EGI corridor, which extends between the proposed authorised on-site substation hubs at the Kwagga WEF 3 site and the Kwagga WEF 1 site	10
Figure C.11: Terrestrial Biodiversity and Aquatic sensitivity map for the proposed 132 kV overhead powerline i.e. Section 6 of the Kwagga EGI corridor, which extends between the proposed authorised on-site substation hubs at the Kwagga WEF 3 site and the Kwagga WEF 1 site	11

C. 1: Proposed 132 kV overhead powerline routing

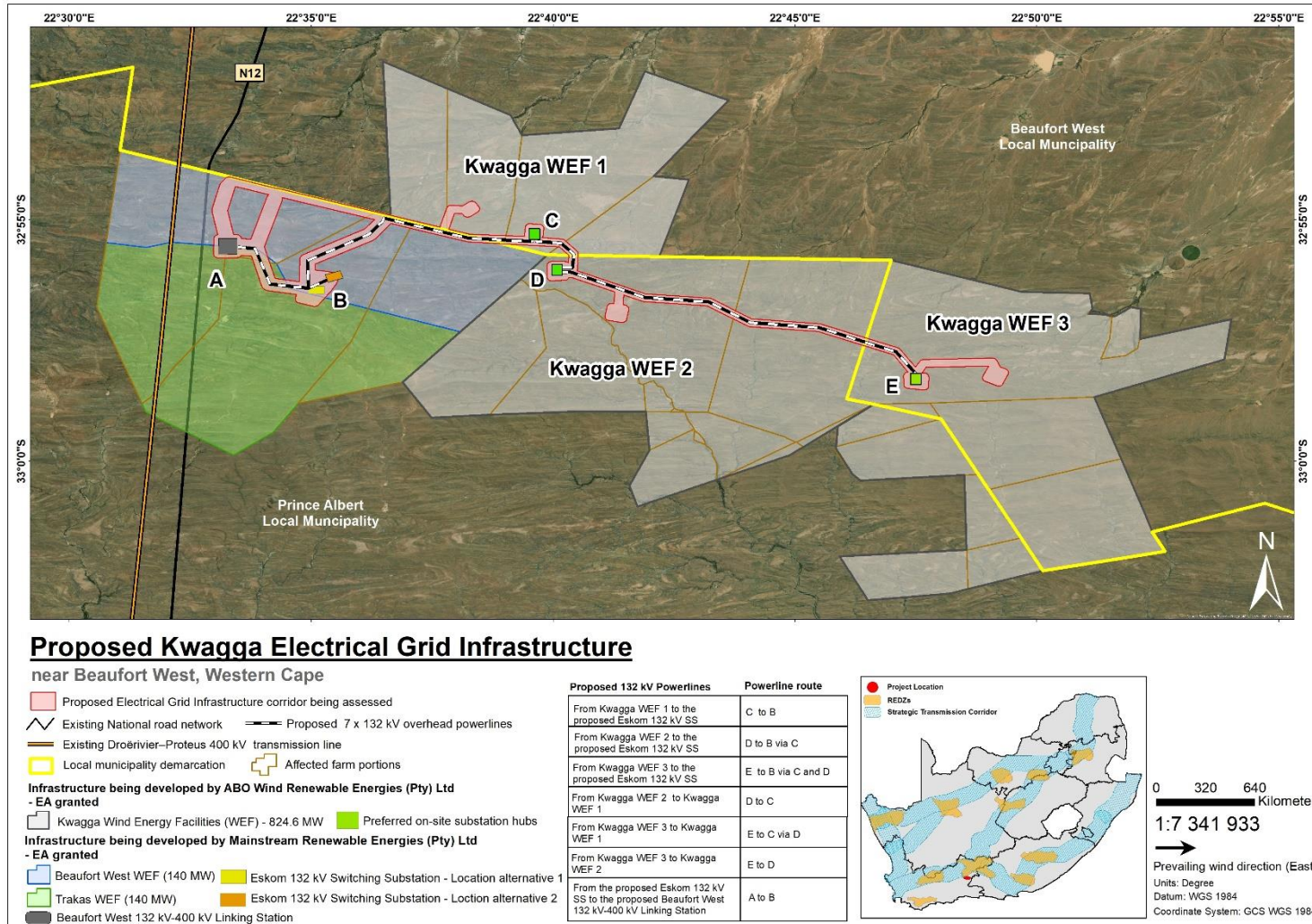


Figure C.1: Locality of the seven proposed 132 kV overhead transmission powerline projects situated south of Beaufort West in the Western Cape

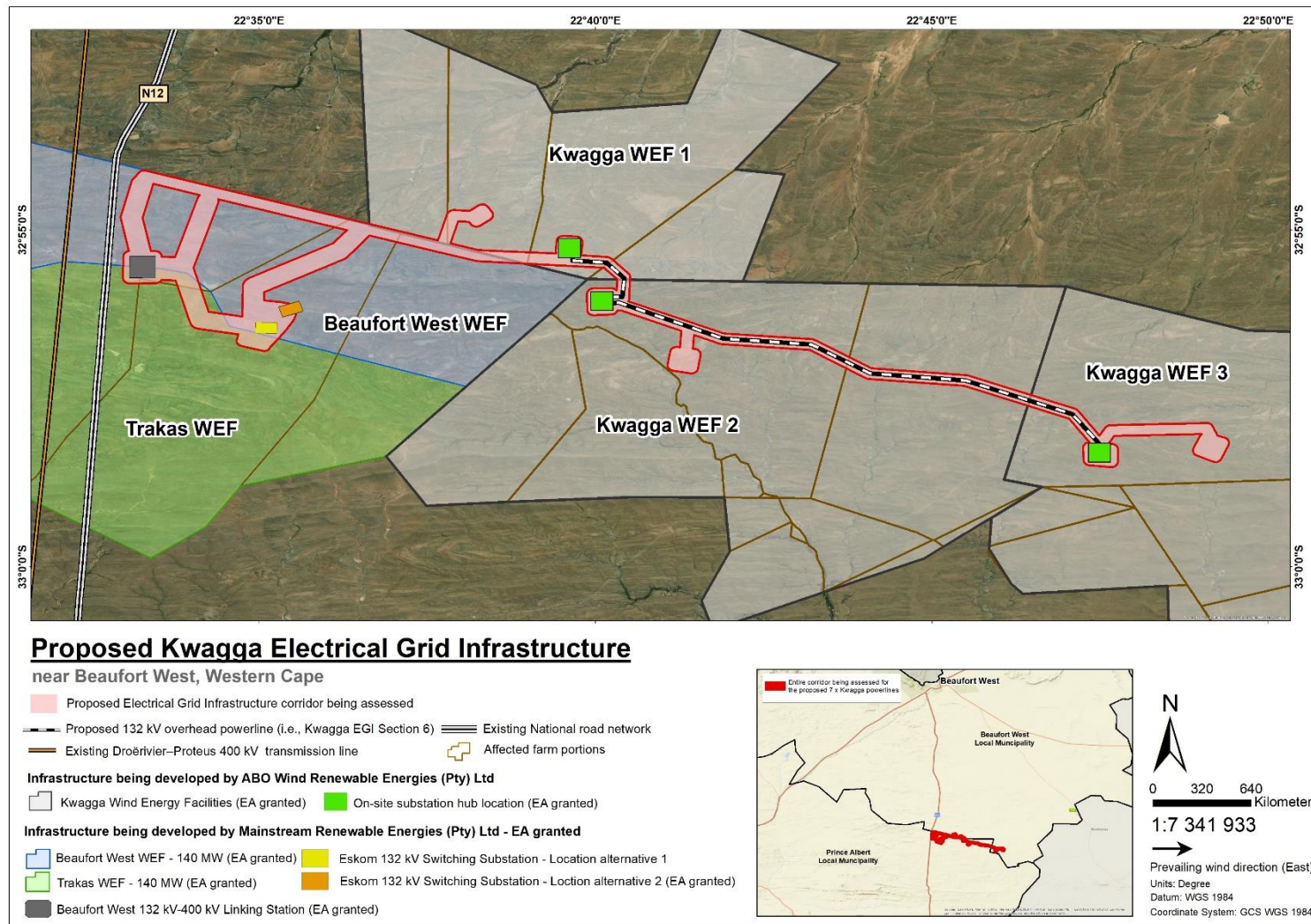


Figure C.2: The proposed Kwagga EGI Section 6 of the 132 kV overhead powerline corridor, which extends between the proposed authorised on-site substation hubs at the Kwagga WEF 3 site and the Kwagga WEF 1 site

C. 2: Environmental Sensitivity Maps

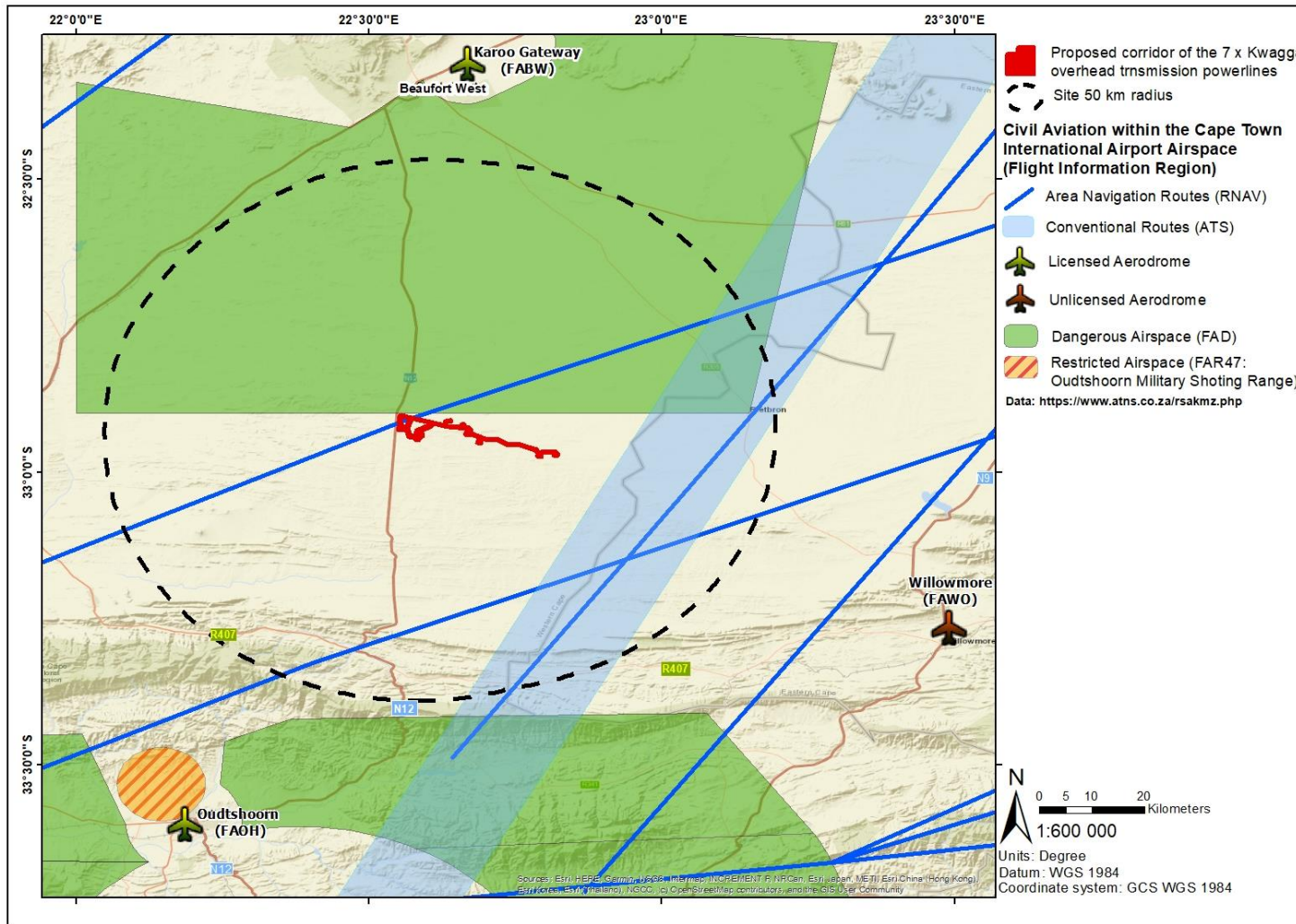


Figure C.3: Civil Aviation Features relative to the seven proposed 132 kV overhead transmission powerline projects site based on the Site Sensitivity Verification.

DRAFT BASIC ASSESSMENT REPORT: Basic Assessment for the proposed construction of a 132 kV Overhead Powerline between the proposed Kwagga Wind Energy Facility 1 and the proposed Kwagga Wind Energy Facility 3, near Beaufort West in the Western Cape Province

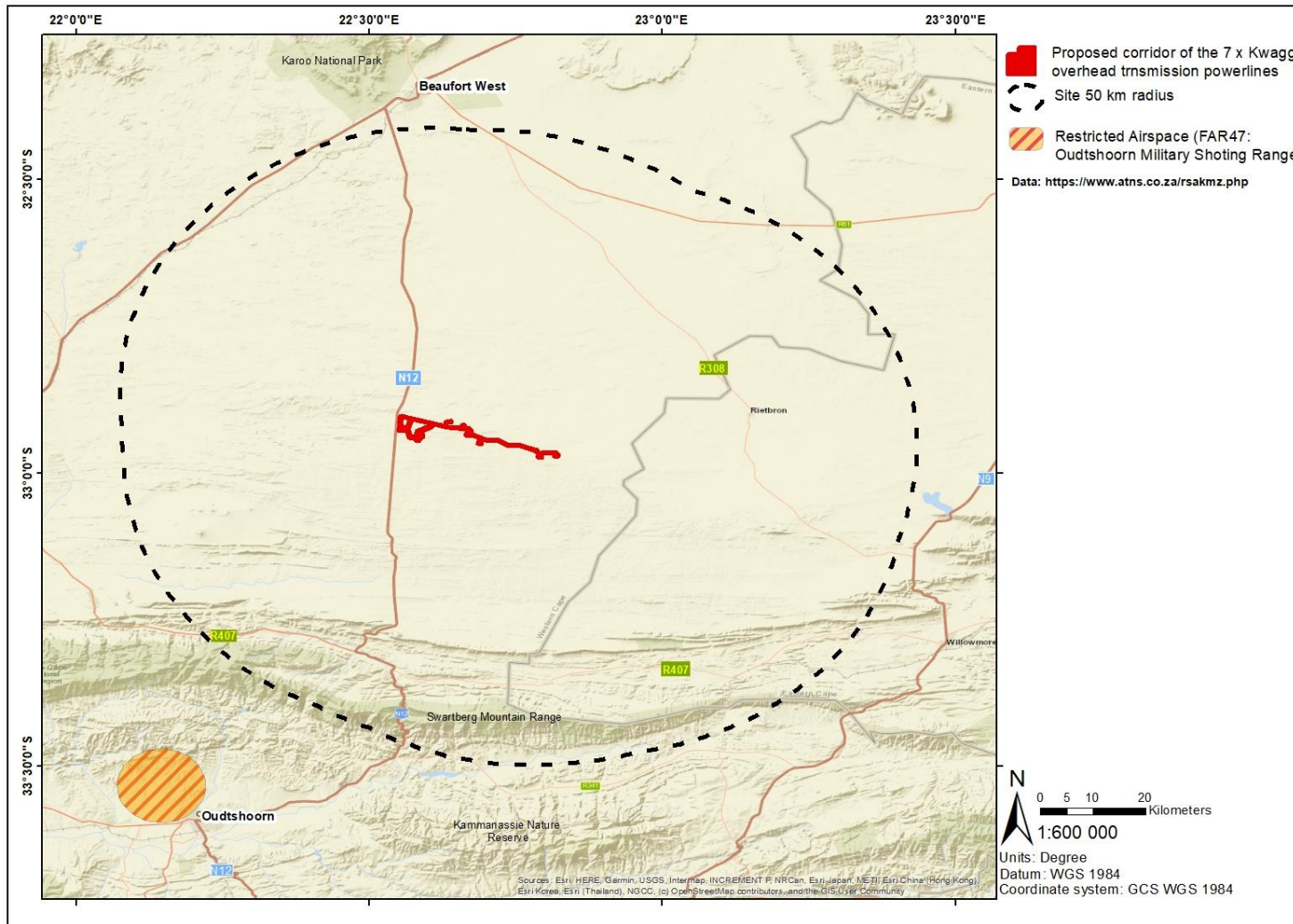


Figure C.4: Defence Features relative to the seven proposed 132 kV overhead transmission powerline projects site based on the Site Sensitivity Verification.

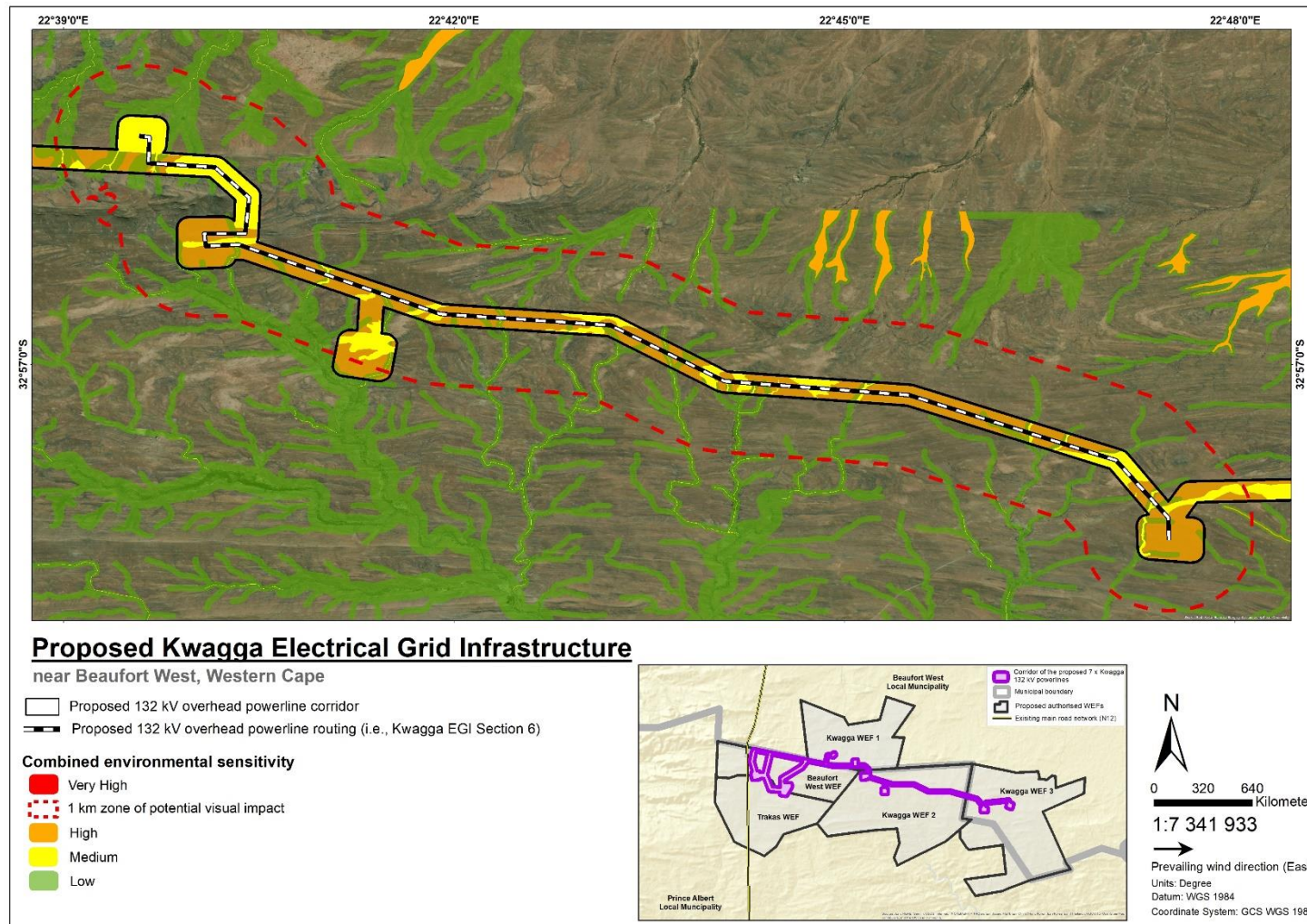


Figure C.5: Combined environmental sensitivity map for the proposed 132 kV overhead powerline i.e. Section 6 of the Kwagga EGI corridor, which extends between the proposed authorised on-site substation hubs at the Kwagga WEF 3 site and the Kwagga WEF 1 site

DRAFT BASIC ASSESSMENT REPORT: Basic Assessment for the proposed construction of a 132 kV Overhead Powerline between the proposed Kwagga Wind Energy Facility 1 and the proposed Kwagga Wind Energy Facility 3, near Beaufort West in the Western Cape Province

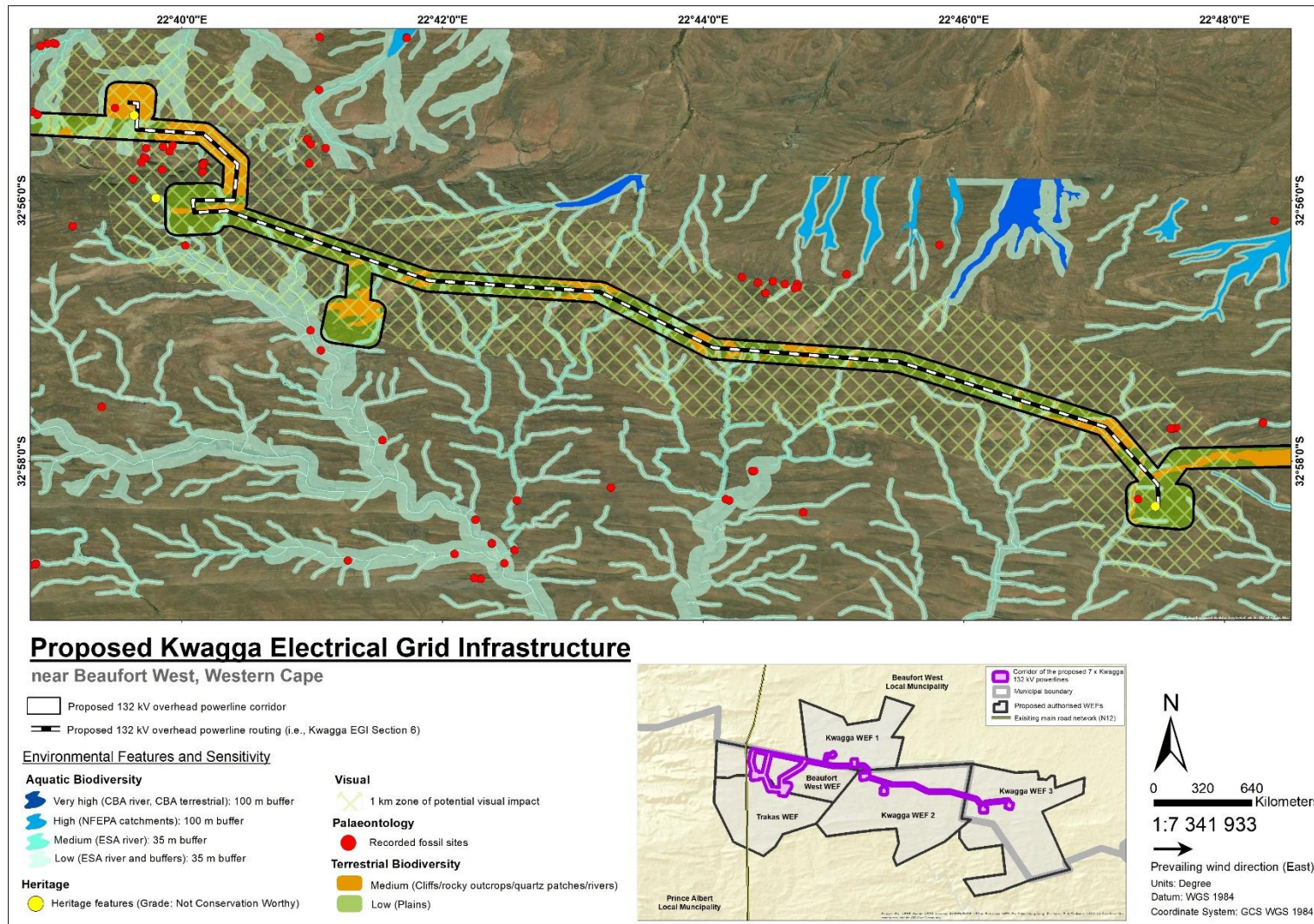


Figure C.6: Environmental features map for the proposed 132 kV overhead powerline i.e. Section 6 of the Kwagga EGI corridor, which extends between the proposed authorised on-site substation hubs at the Kwagga WEF 3 site and the Kwagga WEF 1 site

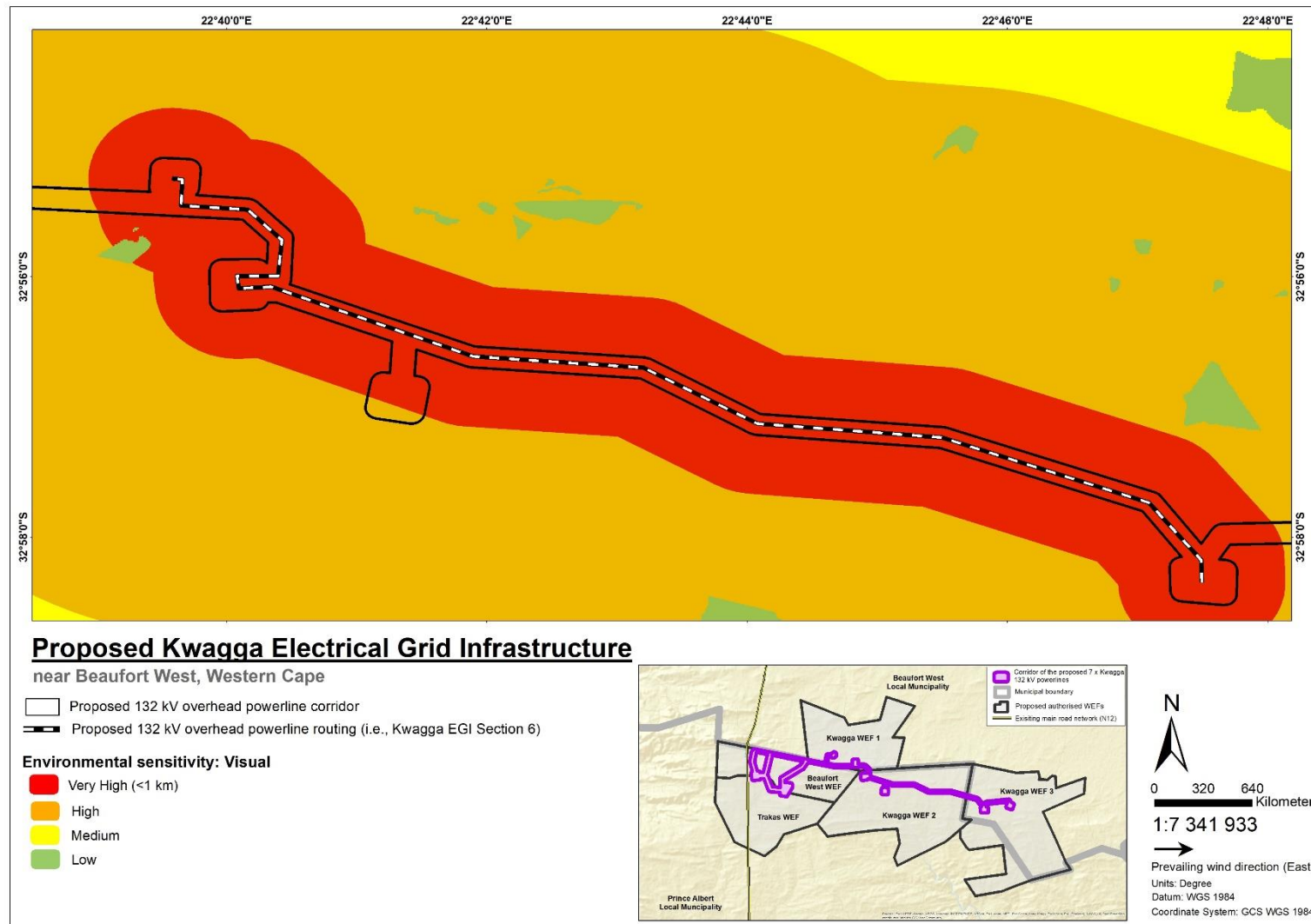


Figure C.7: Visual sensitivity map for the proposed 132 kV overhead powerline i.e. Section 6 of the Kwagga EGI corridor, which extends between the proposed authorised on-site substation hubs at the Kwagga WEF 3 site and the Kwagga WEF 1 site

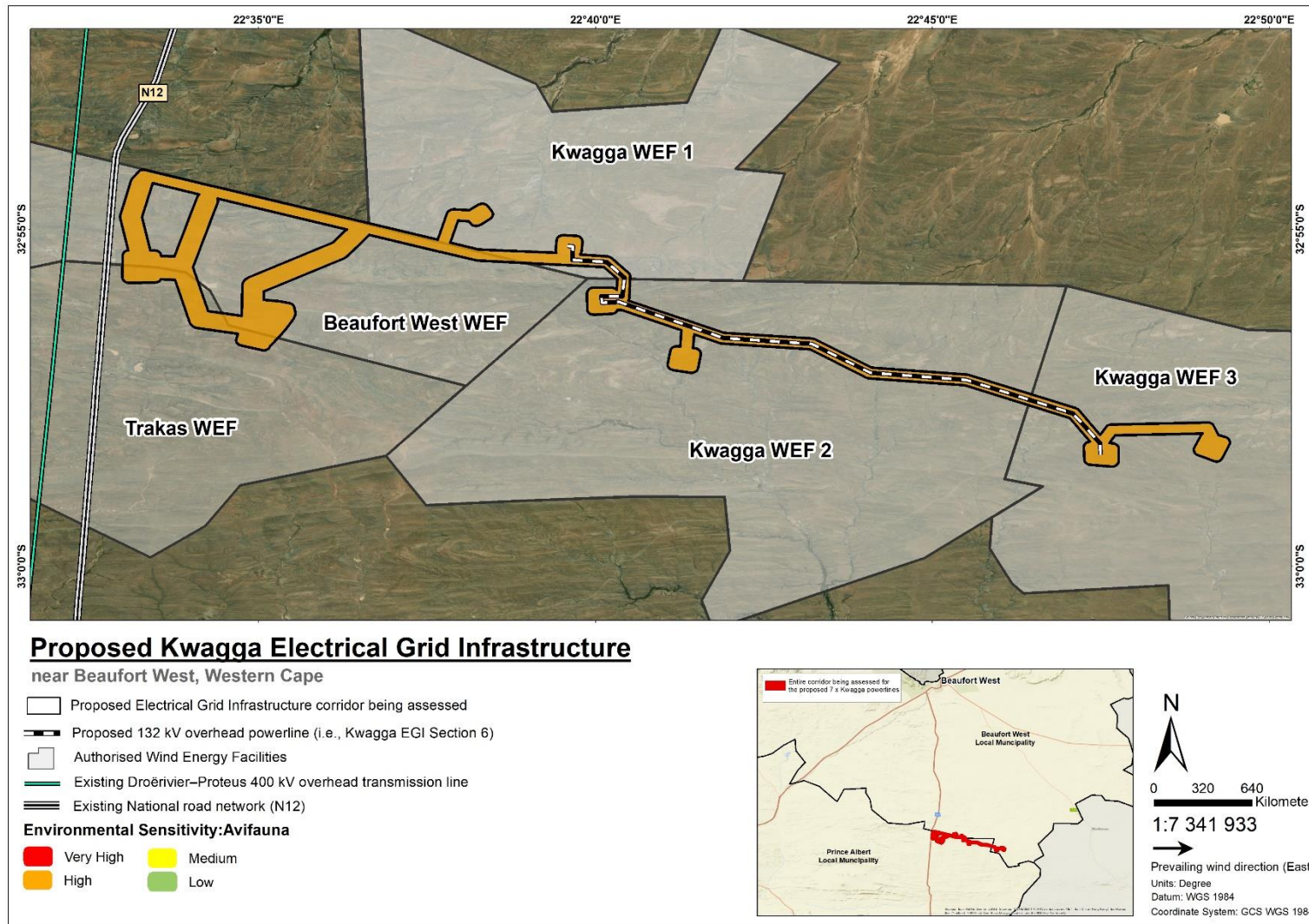


Figure C.8: Avifauna sensitivity map for the proposed 132 kV overhead powerline i.e. Section 6 of the Kwagga EGI corridor, which extends between the proposed authorised on-site substation hubs at the Kwagga WEF 3 site and the Kwagga WEF 1 site

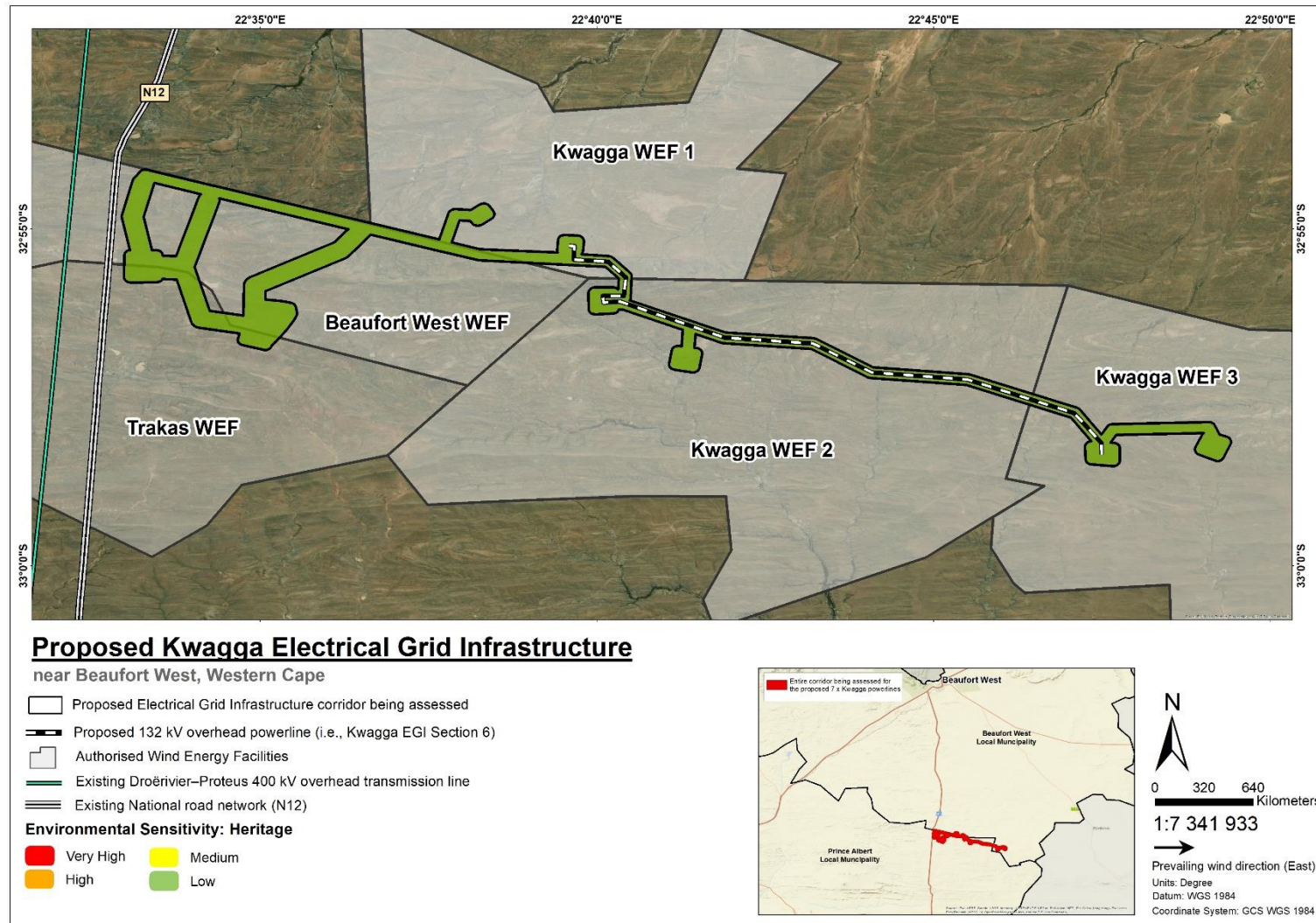


Figure C.9: Heritage sensitivity map for the proposed 132 kV overhead powerline i.e. Section 6 of the Kwagga EGI corridor, which extends between the proposed authorised on-site substation hubs at the Kwagga WEF 3 site and the Kwagga WEF 1 site

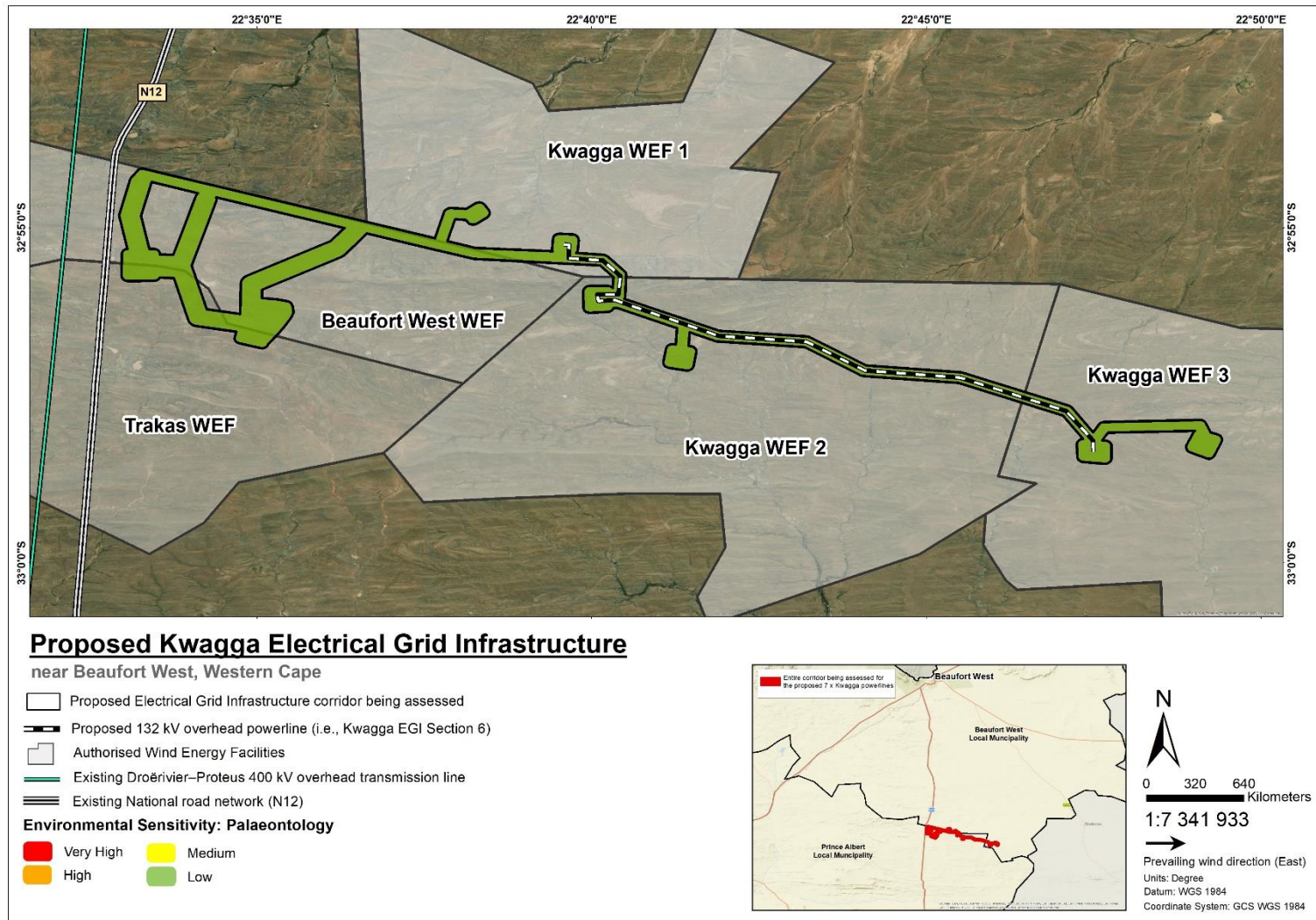


Figure C.10: Palaeontological sensitivity map for the proposed 132 kV overhead powerline i.e. Section 6 of the Kwagga EGI corridor, which extends between the proposed authorised on-site substation hubs at the Kwagga WEF 3 site and the Kwagga WEF 1 site

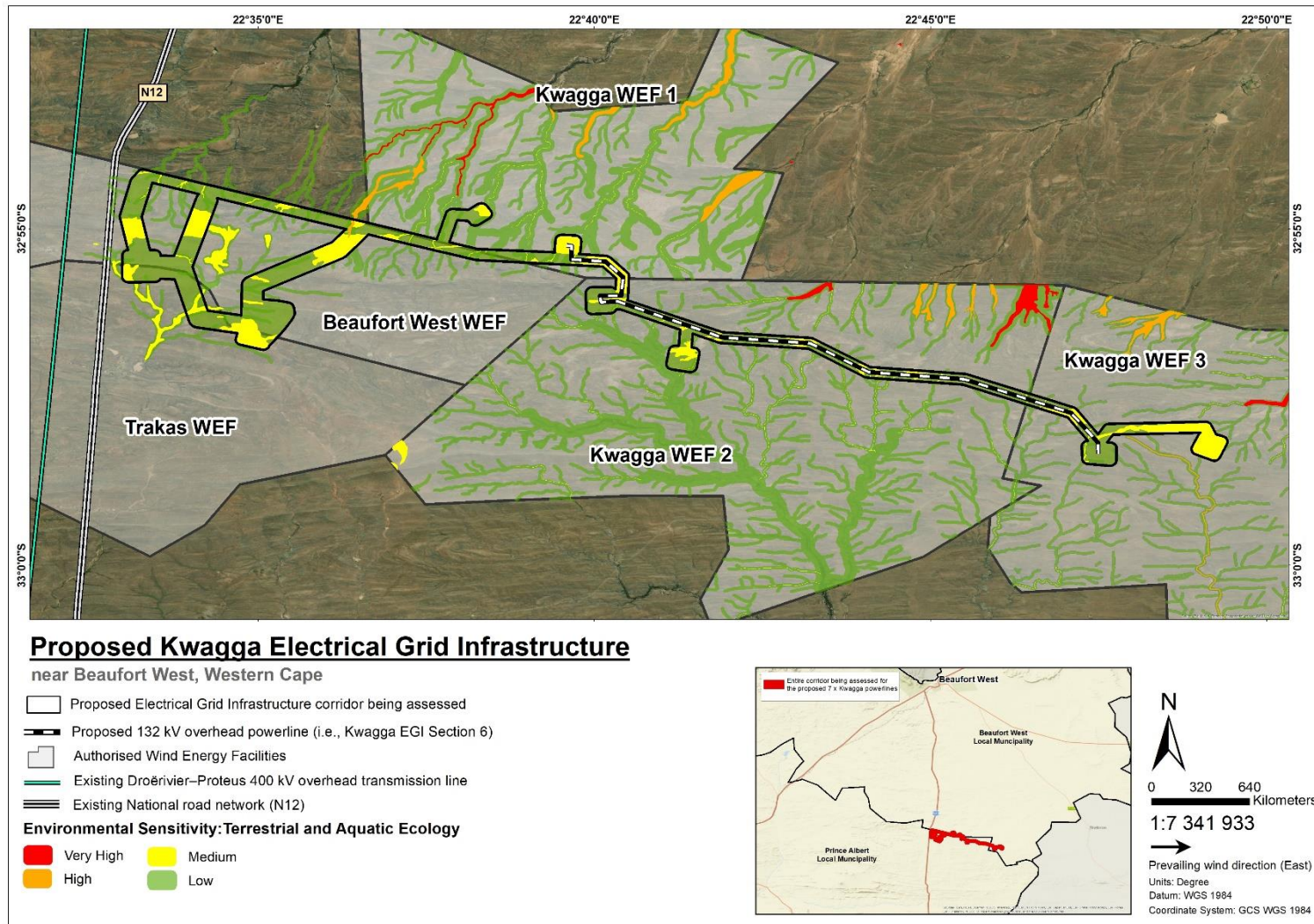


Figure C.11: Terrestrial Biodiversity and Aquatic sensitivity map for the proposed 132 kV overhead powerline i.e. Section 6 of the Kwagga EGI corridor, which extends between the proposed authorised on-site substation hubs at the Kwagga WEF 3 site and the Kwagga WEF 1 site