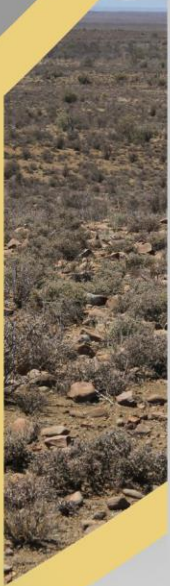


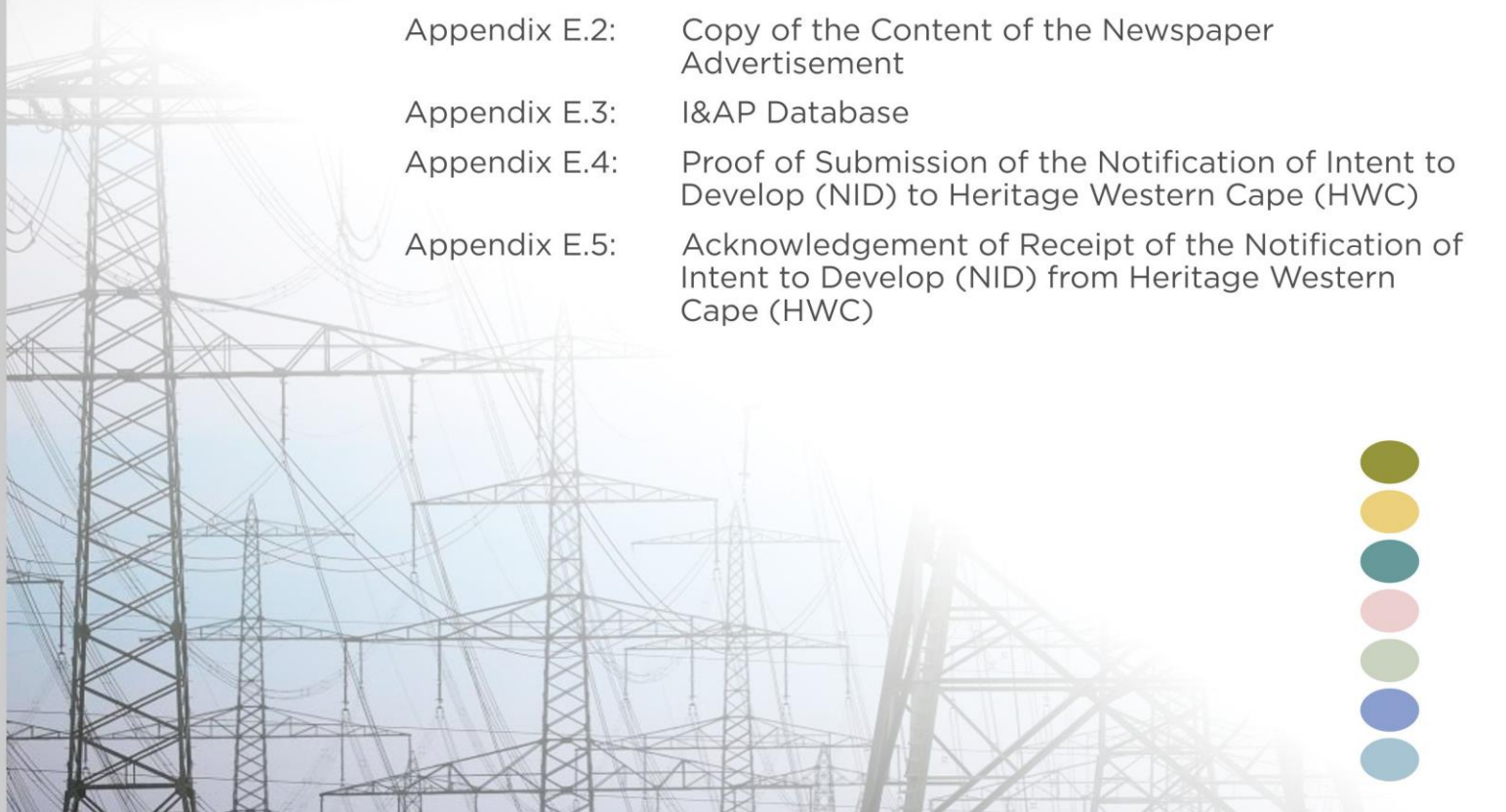
DRAFT BASIC ASSESSMENT REPORT

# APPENDIX E



## Public Participation

- Appendix E.1: Copies and Proof of Placement of Site Notice Boards
- Appendix E.2: Copy of the Content of the Newspaper Advertisement
- Appendix E.3: I&AP Database
- Appendix E.4: Proof of Submission of the Notification of Intent to Develop (NID) to Heritage Western Cape (HWC)
- Appendix E.5: Acknowledgement of Receipt of the Notification of Intent to Develop (NID) from Heritage Western Cape (HWC)



# CONTENTS



<b>E. 1: COPY OF SITE NOTICE BOARD - AFRIKAANS</b>	<b>1</b>
<b>E. 2: PROOF OF PLACEMENT OF SITE NOTICE BOARDS</b>	<b>1</b>
<b>E. 3: COPY OF THE CONTENT OF THE NEWSPAPER ADVERTISEMENT</b>	<b>1</b>
<b>E. 4: I&amp;AP DATABASE</b>	<b>1</b>
<b>E. 5: PROOF OF SUBMISSION OF THE NOTIFICATION OF INTENT TO DEVELOP (NID) TO HERITAGE WESTERN CAPE (HWC)</b>	<b>1</b>
<b>E. 6: ACKNOWLEDGEMENT OF RECEIPT OF THE NOTIFICATION OF INTENT TO DEVELOP (NID) FROM HERITAGE WESTERN CAPE (HWC)</b>	<b>11</b>

## E. 1: COPY OF SITE NOTICE BOARD - AFRIKAANS

### KENNISGEWING VAN DIE GEINTEGREERDE OPENBARE PUBLIEKE DEELNAME PROSES VIR DIE BASIESE EVALUERINGS PROSESSE VIR DIE VOORGESTELDE ONTWIKKELING VAN SEWE 132 KV OORHOOFSE KRAGLYNE EN MEEGAANDE ELEKTRIESE NETWERK INFRASTRUKTUUR TER ONDERSTEUNING VAN DIE DRIE VOORGESTELDE KWAGGA WIND ENERIE OPWEKKINGSFASILITEITE (WEFS) (NL. KWAGGA WEF 1, KWAGGA WEF 2 EN KWAGGA WEF 3), GELEË NABY BEAUFORT WES IN DIE WES-KAAP PROVINSIE

ABO Wind Renewable Energy (Pty) Ltd ("die Aansoeker") is van voorneme om sewe (7x) 132 kV oorhoofse kraglyne en meegaande elektriese netwerk infrastruktuur op te rig, ter ondersteuning van die voorgestelde Kwagga WEF 1, Kwagga WEF 2 en Kwagga WEF 3 naby Beaufort Wes in die Wes-Kaap Provinsie. Die Nasionale Departement van Bosbou, Visserye en die Omgewing (DFFE) het afsonderlike Omgewingsgoedkeuring gegee vir die Kwagga WEF 1 (DFFE Verw: 14-12-16-3-3-2-2070), Kwagga WEF 2 (DFFE Verw: 14-12-16-3-3-2-2071) en die Kwagga WEF 3 (DFFE Verw: 14-12-16-3-3-2-2072) projekte op 7 April 2022. Die elektriese netwerk infrastruktuur komponent van die drie voorgestelde Kwagga WEF projekte het egter nie deel gevorm van die Bestekopname en Omgewingsimpak Studies wat vir elkeen van die drie WEFs onderneem is nie. Die Aansoeker is dus nou besig om die aansoeke vir omgewingsgoedkeuring sowel as omgewingsevaluering wat vereis word vir hierdie voorgenome kraglyn ontwikkelinge, wat nodig is vir die verbinding van die voorgestelde Kwagga WEFs met die nasionale elektriese netwerk, te onderneem.

Die meegaande elektriese netwerk infrastruktuur sluit in die installing en/of opgradering van toevoer plekke ("feeder bays"), busstawe "busbars", nuwe transformator plekke "transformer bays" (tot en met 500 MVA) by die voorgestelde Eskom 132 kV Skakelstasie ("Switching Station") (DFFE Verw: 14-12-16-3-3-1-2464) en die voorgestelde Beaufort West 132 kV-400 kV Verbindingstasie ("Linking Station") (DFFE Verw: 14-12-16-3-3-2-925-1). Die voorgestelde kraglyne is geleë in die Beaufort West- en Prince Albert Plaaslike Munisipaliteite, wat val binne die Sentrale Karoo Distrik Munisipaliteit. Die korridor vir die sewe voorgestelde 132 kV kraglyne sal die volgende geaffekteerde plaas gedeeltes deurkruis (sien Figuur 1):

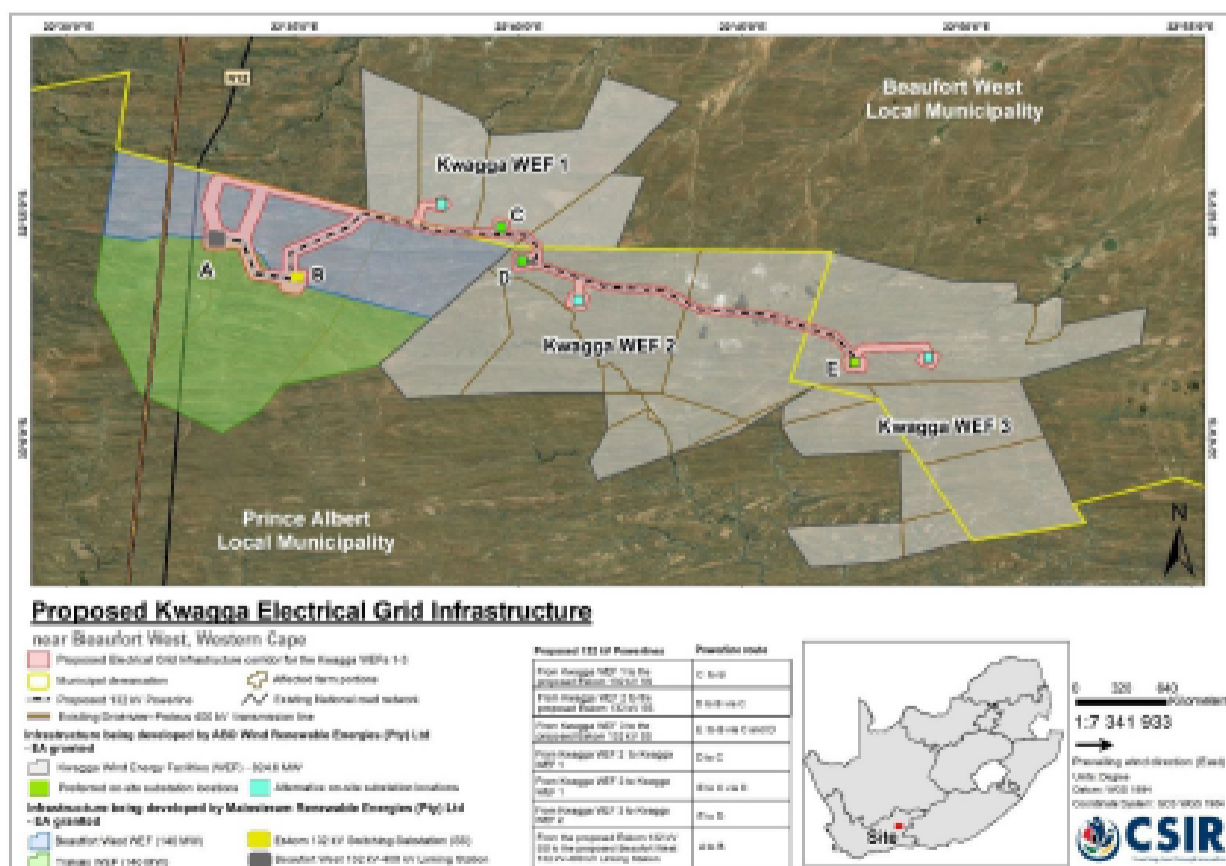
- Restant van die Plaas Dwaalfontein Wes No. 377;
- Gedeelte 3 van die Plaas Tyger Poort No. 376;
- Gedeelte 1 van die Plaas Dwaalfontein Wes No. 377;
- Restant van die Plaas Dwaalfontein No. 379;
- Restant van die Plaas Wolve Kraal No. 17;
- Gedeelte 9 van die Plaas Wolve Kraal No. 17;
- Gedeelte 7 van die Plaas Muis Kraal No. 373;
- Gedeelte 1 van die Plaas Witpoortje No. 16;
- Restant van die Plaas Trakas Kuilen No. 15; en
- Gedeelte 1 van die Plaas Trakas Kuilen No. 15.

Voorgestelde Oorhoofse Kraglyn Roete		Lengte
Gedeelte 1: A tot B	Vanaf die voorgestelde Beaufort West 132 kV-400 kV Verbindingstasie tot by die voorgestelde Eskom 132 kV Skakelstasie	3 km
Gedeelte 2: B tot C	Vanaf die voorgestelde Eskom 132 kV Skakelstasie na die voorgestelde Kwagga WEF 1	9 km
Gedeelte 3: B tot D (via C)	Vanaf die voorgestelde Eskom 132 kV Skakelstasie na die voorgestelde Kwagga WEF 2	12 km
Gedeelte 4: B tot E (via C and D)	Vanaf die voorgestelde Eskom 132 kV Skakelstasie na die voorgestelde Kwagga WEF 3	25 km
Gedeelte 5: C tot D	Vanaf die voorgestelde Kwagga WEF 1 na die voorgestelde Kwagga WEF 2	3 km
Gedeelte 6: C tot E (via D)	Vanaf die voorgestelde Kwagga WEF 1 na die voorgestelde Kwagga WEF 3	16 km
Gedeelte 7: D tot E	Vanaf die voorgestelde Kwagga WEF 2 na die voorgestelde Kwagga WEF 3	13 km

Die 7 x voorgestelde kraglyn projekte is onderhewig aan 'n Basiese Evaluering ("BA") proses, en 'n besluitnemingsperiode van 107 dae ingevolge die Nasionale Omgewingsbestuurswet, 1998 (Wet 107 van 1998, soos gewysig) ("NEMA") en die nuutste 2014 Omgewingsimpak Studie ("EIA") Regulasies (soos gewysig), sowel as die gepubliseerde Omgewingsassesseringsprotokolle ingevolge die 2014 NEMA "EIA" Regulasies, soos gewysig en waar van toepassing (GG 43855 / GN 1150, 30 Oktober 2020 en GG 43110 / GN 320, 20 Maart 2020). Daarom sal sewe Aansoeke vir Omgewingsgoedkeuring ("EA") en sewe afsonderlike "BA" verslae voorberei en ingedien word by die DFFE vir besluitneming. Dit word daarom voorgestel dat sewe aparte EAs uitgereik word vir elkeen van die 132 kV kraglyne en meegaande elektriese netwerk infrastruktuur. Neem kennis dat die sewe voorgestelde kraglyn ontwikkelings nie geleë is in 'n Hernubare Energie Ontwikkeling Sone ("REDZ") of 'n strategiese kraglyn korridor nie.

Die gelyste aktiwiteite ingevolge die 2014 NEMA "EIA" Regulasies (soos gewysig) ("GN 327 "Listing Notice" [LN] 1 en GN 324 LN 3") wat dalk van toepassing mag wees op die voorgestelde kraglyn projekte, sal bevestig word gedurende die "BA" prosesse. Kommentaar sal ook verkry word vanaf Erfenis Wes-Kaap ("Heritage Western Cape") ingevolge die Wet op Nasionale Erfenis Bronne (Wet 25 van 1999). Die "BA" prosesse sal ook bevestig indien 'n Waterverbruikslisensie vereis word ingevolge die Nasionale Water Wet (Wet 36 van 1998), soos gewysig. 'n Geïntegreerde Publieke Deelname Proses sal daarom onderneem word vir die voorgestelde projekte, insluitend sewe 132 kV kraglyne en meegaande elektriese netwerk infrastruktuur, wat gedek sal word in die sewe afsonderlike "BA" verslae, asook alle aansoeke soos vereis ingevolge ander relevante omgewingswetgewing.

Die Wetenskaplike Nywerheids- en Navorsingsraad (WNNR) is aangestel as die onafhanklike Omgewingskonsultant ("EAP") om die "BA" prosesse vir die voorgestelde projekte te behartig en te bestuur namens die Aansoeker. Sou u belangstel om te registreer as 'n Geïnteresseerde en/of Belanghebbende Party (G&BP), en om kommentaar te lewer op die voorgestelde projekte, word u vriendelik versoek om u naam en kontakbesonderhede te epos tesame met 'n aanduiding van enige direkte, besigheids, finansiële, persoonlike of ander redes vir u moontlike belangstelling in die aansoeke, aan die "EAP" by die WNNR: Dhiveshni Moodley (Tel: 074 890 0103); en Lizande Kellerman (Tel: 083 799 0949); E-pos: [ems@csir.co.za](mailto:ems@csir.co.za) (met "Kwagga EGI" as die onderwerp); Posadres: Posbus 320, Stellenbosch, 7599; of Faks: 021 888 2893. Vir verdere inligting en verwickelinge op die projekte besoek gerus die projek webwerf by <https://www.csir.co.za/environmental-impact-assessment>



Figuur 1: Ligging van die studiegebied wat geëvalueer word en die plaas gedeeltes wat geaffekteer gaan word deur die ontwikkeling van die voorgestelde 7 x 132 kV oorhoofse kraglyne en meegaande infrastruktuur.

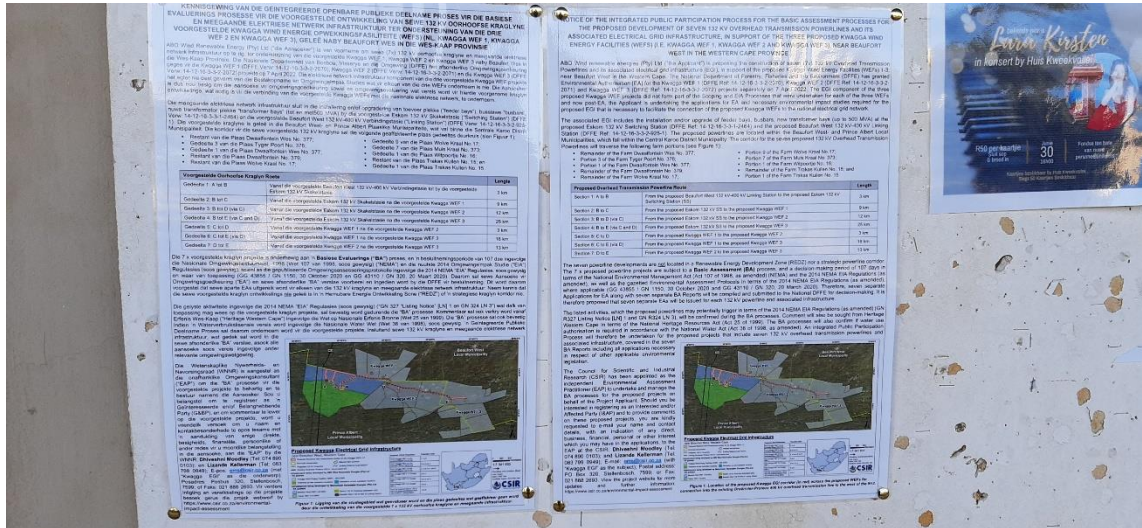




DRAFT BASIC ASSESSMENT REPORT: Basic Assessment for the proposed construction of a 132 kV Overhead Powerline between the proposed Kwagga Wind Energy Facility 1 and the proposed Kwagga Wind Energy Facility 3, near Beaufort West in the Western Cape Province

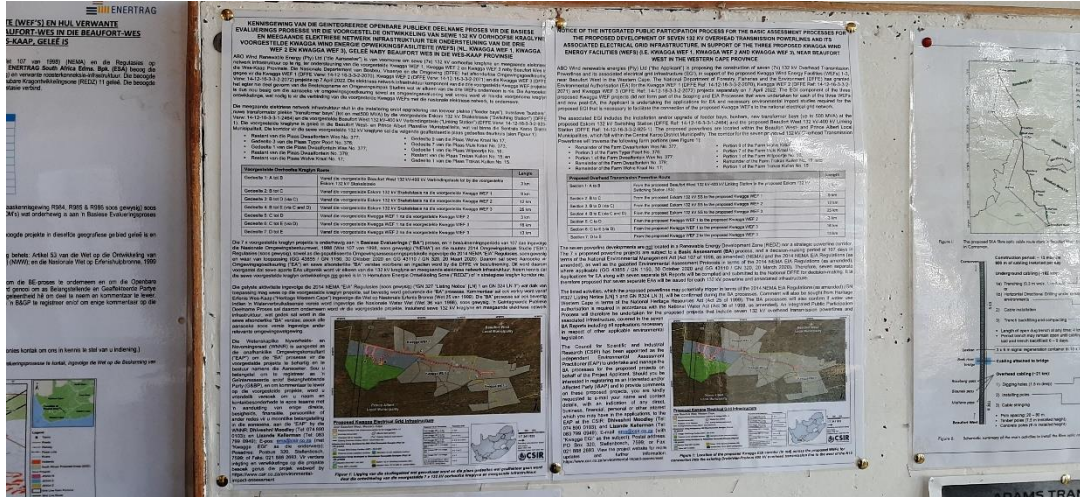
# E. 2: PROOF OF PLACEMENT OF SITE NOTICE BOARDS

Site Notice board placed at the entrance at the Prince Albert Local Municipality offices on the R407, Prince Albert (Co-ordinates: S33° 13' 41.8" and E22° 01' 52.0")



DRAFT BASIC ASSESSMENT REPORT: Basic Assessment for the proposed construction of a 132 kV Overhead Powerline between the proposed Kwagga Wind Energy Facility 1 and the proposed Kwagga Wind Energy Facility 3, near Beaufort West in the Western Cape Province

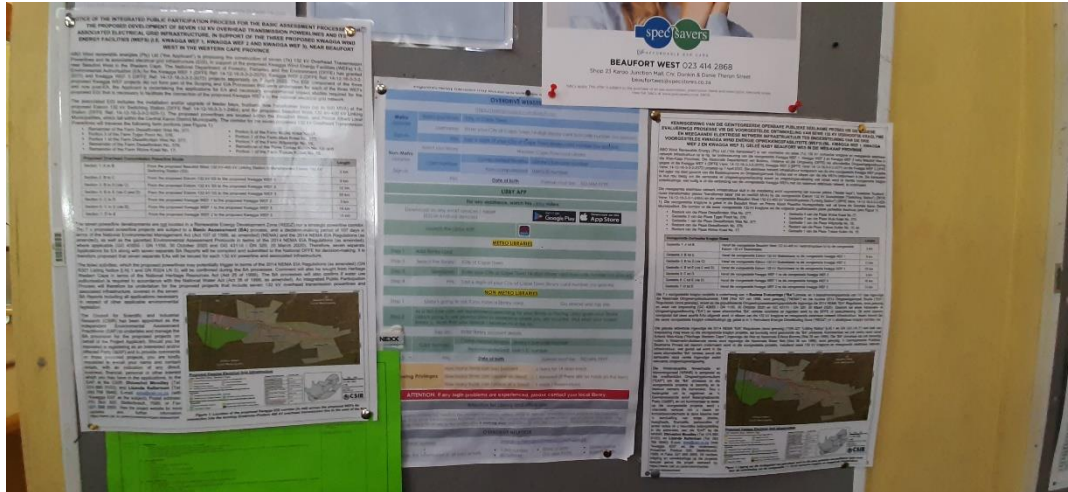
**Site Notice board placed at the entrance at the Central Karoo District Municipality offices at 63 Donkin Street, Beaufort West (Co-ordinates: S32° 20' 55.0" and E22° 34' 57.6")**





DRAFT BASIC ASSESSMENT REPORT: Basic Assessment for the proposed construction of a 132 kV Overhead Powerline between the proposed Kwagga Wind Energy Facility 1 and the proposed Kwagga Wind Energy Facility 3, near Beaufort West in the Western Cape Province

**Site Notice board placed at the entrance at the Beaufort West Local Municipality offices at 25 Church Street, Beaufort West (Co-ordinates: S32° 21' 00.7" and E22° 35' 00.4")**



**DRAFT BASIC ASSESSMENT REPORT: Basic Assessment for the proposed construction of a 132 kV Overhead Powerline between the proposed Kwagga Wind Energy Facility 1 and the proposed Kwagga Wind Energy Facility 3, near Beaufort West in the Western Cape Province**

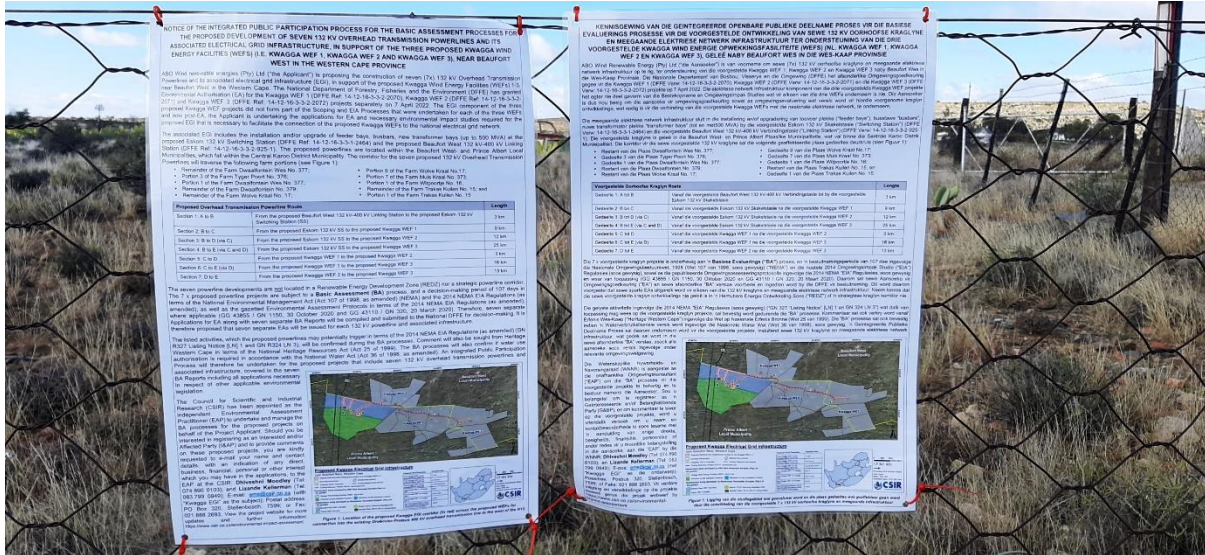
**Site Notice board placed at the entrance at the Beaufort West Public Library on Church Street, Beaufort West (Co-ordinates: S32° 21' 01.3" and E22° 35' 00.4")**





**DRAFT BASIC ASSESSMENT REPORT: Basic Assessment for the proposed construction of a 132 kV Overhead Powerline between the proposed Kwagga Wind Energy Facility 1 and the proposed Kwagga Wind Energy Facility 3, near Beaufort West in the Western Cape Province**

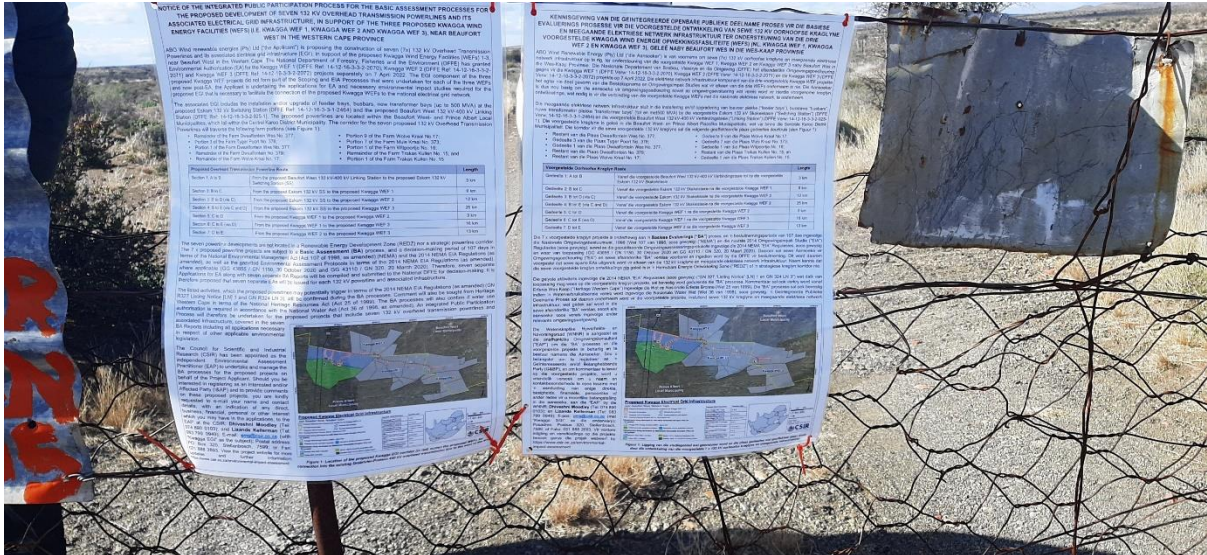
**Site Notice board placed at the entrance gate on the N12 main road at the Silver Karoo Guest House turnoff (Co-ordinates: S32°53'20.19" and E22°33'11.11")**





**DRAFT BASIC ASSESSMENT REPORT: Basic Assessment for the proposed construction of a 132 kV Overhead Powerline between the proposed Kwagga Wind Energy Facility 1 and the proposed Kwagga Wind Energy Facility 3, near Beaufort West in the Western Cape Province**

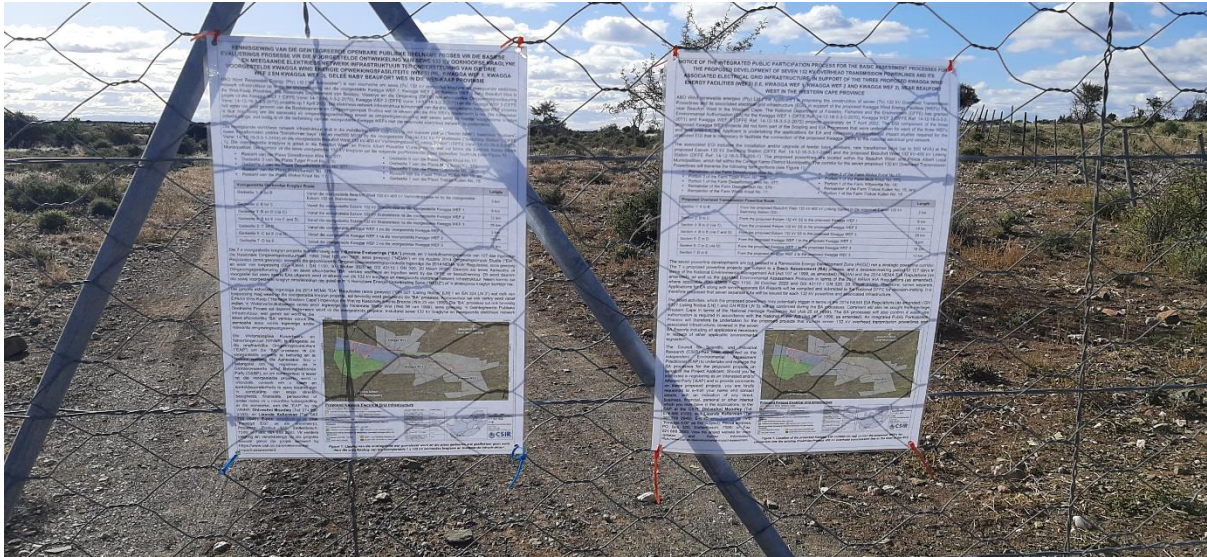
**Site Notice board placed at the entrance gate to Farm Dwaalfontein 1/377 on the western border of the proposed Kwagga WEF 1 site (Co-ordinates: S32°53'47.8" and E22°36'32.7")**





DRAFT BASIC ASSESSMENT REPORT: Basic Assessment for the proposed construction of a 132 kV Overhead Powerline between the proposed Kwagga Wind Energy Facility 1 and the proposed Kwagga Wind Energy Facility 3, near Beaufort West in the Western Cape Province

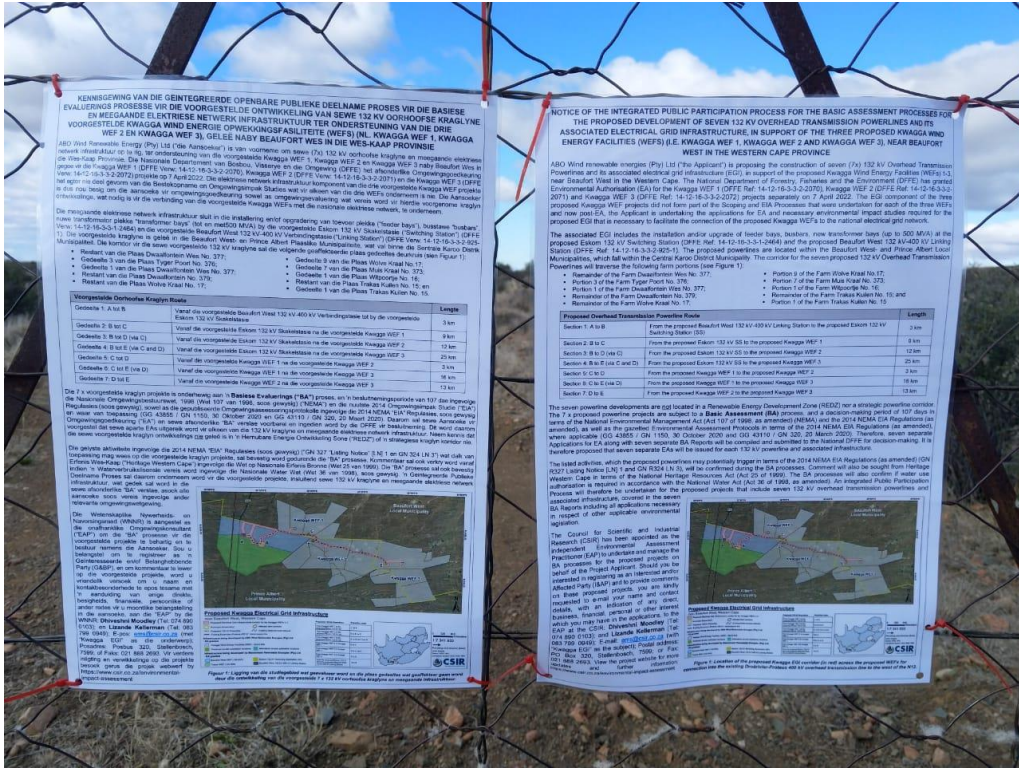
**Site Notice board placed at the entrance gate to Farm Tyger Poort 3/376 on the eastern border of the proposed Kwagga WEF 1 site (Co-ordinates: S32°55'16.7" and E22°42'22.1")**





**DRAFT BASIC ASSESSMENT REPORT: Basic Assessment for the proposed construction of a 132 kV Overhead Powerline between the proposed Kwagga Wind Energy Facility 1 and the proposed Kwagga Wind Energy Facility 3, near Beaufort West in the Western Cape Province**

**Site Notice board placed at the entrance gate to the homestead on Farm Muis Kraal 7/373 from the R308 Rietbron bound public access road (Co-ordinates: S32°57'48.1" and E22°50'03.3")**





DRAFT BASIC ASSESSMENT REPORT: Basic Assessment for the proposed construction of a 132 kV Overhead Powerline between the proposed Kwagga Wind Energy Facility 1 and the proposed Kwagga Wind Energy Facility 3, near Beaufort West in the Western Cape Province

**Site Notice board placed on the western fence to Farm Muis Kraal 7/373 from the Rietbron bound public access road (Co-ordinates: S32°58'00.0" and E22°47'30.0")**





DRAFT BASIC ASSESSMENT REPORT: Basic Assessment for the proposed construction of a 132 kV Overhead Powerline between the proposed Kwagga Wind Energy Facility 1 and the proposed Kwagga Wind Energy Facility 3, near Beaufort West in the Western Cape Province

**Site Notice board placed on the western fence to Farm Wolke Kraal 19/17 from the Rietbron bound public access road (Co-ordinates: S32°58'50.0" and E22°45'20.5")**





### E. 3: COPY OF THE CONTENT OF THE NEWSPAPER ADVERTISEMENT

**NOTICE OF THE INTEGRATED PUBLIC PARTICIPATION PROCESS FOR THE BASIC ASSESSMENT PROCESSES FOR THE PROPOSED DEVELOPMENT OF SEVEN 132 KV OVERHEAD TRANSMISSION POWERLINES AND ITS ASSOCIATED ELECTRICAL GRID INFRASTRUCTURE, IN SUPPORT OF THE THREE PROPOSED KWAGGA WIND ENERGY FACILITIES (WEFS) (I.E. KWAGGA WEF 1, KWAGGA WEF 2 AND KWAGGA WEF 3), NEAR BEAUFORT WEST IN THE WESTERN CAPE PROVINCE**

Notice is hereby given that the Project Applicant, ABO Wind renewable energies (Pty) Ltd, is proposing the construction of seven (7x) 132 kV Overhead Transmission Powerlines and its associated electrical grid infrastructure (EGI), in support of the proposed Kwagga Wind Energy Facilities (WEFs) 1-3, near Beaufort West in the Western Cape. The National Department of Forestry, Fisheries and the Environment (DFFE) has granted Environmental Authorisation (EA) for the Kwagga WEF 1 (DFFE Ref: 14-12-16-3-3-2-2070), Kwagga WEF 2 (DFFE Ref: 14-12-16-3-3-2-2071) and Kwagga WEF 3 (DFFE Ref: 14-12-16-3-3-2-2072) projects separately on 7 April 2022. The EGI component of the three proposed Kwagga WEFs did not form part of the Scoping and EIA processes that were undertaken for each WEF and now post-EA, the Applicant is undertaking the Applications for EA and necessary environmental impact studies required for the proposed Kwagga EGI that is necessary to facilitate the connection of the proposed Kwagga WEFs to the national electrical grid network.

The associated EGI includes the installation and/or upgrade of feeder bays, busbars, new transformer bays (up to 500 MVA) at the proposed Eskom 132 kV Switching Station (DFFE Ref: 14-12-16-3-3-1-2464) and the proposed Beaufort West 132 kV-400 kV Linking Station (DFFE Ref: 14-12-16-3-3-2-925-1). The proposed powerlines are located within the Beaufort West- and Prince Albert Local Municipalities, which fall within the Central Karoo District Municipality. The corridor for the seven proposed 132 kV Overhead Transmission Powerlines will traverse the following farm portions:

- Farm Dwaalfontein Wes No. 377 / RE
- Farm Tyger Poort No. 376 / 3
- Farm Dwaalfontein Wes No. 377 / 1
- Farm Dwaalfontein No. 379 / RE
- Farm Wolve Kraal No. 17 / RE
- Farm Wolve Kraal No. 17 / 9
- Farm Muis Kraal No. 373 / 7
- Farm Witpoortje No. 16 / 1
- Farm Trakas Kuilen No. 15 / RE
- Farm Trakas Kuilen No. 15 / 1

Proposed 132 kV Overhead Transmission Powerline Route Sections	Length
Between the Kwagga WEF 1 and the Eskom 132 kV Switching Substation	9 km
Between the Kwagga WEF 2 and the Eskom 132 kV Switching Substation	12 km
Between the Kwagga WEF 3 and the Eskom 132 kV Switching Substation	25 km
Between the Kwagga WEF 1 and the Kwagga WEF 2	3 km
Between the Kwagga WEF 1 and the Kwagga WEF 3	16 km
Between the Kwagga WEF 2 and the Kwagga WEF 3	13 km
Between the Beaufort West 132 kV-400 kV Linking Station and the Eskom 132 kV Switching Substation	3 km

The 7 x proposed powerline projects are subject to a **Basic Assessment (BA)** process in terms of the National Environmental Management Act (Act 107 of 1998, as amended) (NEMA) and the 2014 NEMA EIA Regulations (as amended), as well as the gazetted Environmental Assessment Protocols in terms of the 2014 NEMA EIA Regulations (as amended), where applicable (GG 43855 / GN 1150, 30 October 2020 and GG 43110 / GN 320, 20 March 2020). Therefore, seven separate Applications for EA along with seven separate BA Reports will be compiled and submitted to the National DFFE for decision-making. It is therefore proposed that seven separate EAs will be issued for each 132 kV powerline and associated infrastructure. The proposed projects trigger various listed activities in the 2014 NEMA EIA Regulations (as amended); with GN 327 LN 1: 11 serving as the main activity. Comment will also be sought from the Heritage Western Cape in terms of the National Heritage Resources Act (Act 25 of 1999). The BA processes will also confirm the need for Water Use Authorisation in accordance with the National Water Act (Act 36 of 1998, as amended). An integrated Public Participation Process will be undertaken for the proposed projects.

The Council for Scientific and Industrial Research (CSIR) has been appointed as the independent Environmental Assessment Practitioner (EAP) to undertake and manage the BA processes for these projects on behalf of the Project Applicant. Interested and/or Affected Parties (I&APs) are hereby notified of the release of the Draft BA Reports for a 30-day comment period, which will extend from **11 July to 11 August 2022**. The Draft BA Reports can be downloaded from the following website: <https://www.csir.co.za/environmental-impact-assessment>.

Should you be interested in registering as an I&AP and to provide comments on the Draft BA Reports, please send your name, contact details, with an indication of your interest in the application, along with comments, to the EAP at the CSIR: Dhiveshni Moodley (Tel: 074 890 0103); E-mail: [ems@csir.co.za](mailto:ems@csir.co.za) (with "Kwagga EGI" as the subject); Postal Address: P.O. Box 320, Stellenbosch, 7599; Tel: +27 21 888 2400. Future correspondence relating to these BAs will be distributed to all registered I&APs.

**KENNISGEWING VAN DIE GEINTEGREERDE OPENBARE PUBLIEKE DEELNAME PROSES VIR DIE BASIESE EVALUERINGS PROSESSE VIR DIE VOORGESTELDE ONTWIKKELING VAN SEWE 132 KV OORHOOFSE KRAGLYNE EN MEEGAANDE ELEKTRIESE NETWERK INFRASTRUKTUUR TER ONDERSTEUNING VAN DIE DRIE VOORGESTELDE KWAGGA WIND ENERGIE OPWEEKINGSFASILITEITE (WEFS) (NL. KWAGGA WEF 1, KWAGGA WEF 2 EN KWAGGA WEF 3), GELEË NABY BEAUFORT WES IN DIE WES-KAAP PROVINSIE**

Hiermee word kennis gegee dat die Projek Aansoeker, ABO Wind renewable energies (Pty) Ltd, die ontwikkeling voorstel van sewe (7x) 132 kV oorhoofse kraglyne en meegaande elektriese netwerk infrastruktuur, ter ondersteuning van die voorgestelde Kwagga WEF 1, Kwagga WEF 2 en Kwagga WEF 3 naby Beaufort Wes in die Wes-Kaap. Die Nasionale Departement van Bosbou, Visserye en die Omgewing (DFFE) het afsonderlike Omgewingsgoedkeuring ("EA") gegee vir die Kwagga WEF 1 (DFFE Verw: 14-12-16-3-3-2-2070), Kwagga WEF 2 (DFFE Verw: 14-12-16-3-3-2-2071) en die Kwagga WEF 3 (DFFE Verw: 14-12-16-3-3-2-2072) projekte op 7 April 2022. Die elektriese netwerk infrastruktuur komponent van die drie voorgestelde Kwagga WEF het egter nie deel gevorm van die Bestekopname en Omgewingsimpak Studies wat vir elke WEF onderneem is nie. Die Aansoeker onderneem dus nou die aansoek vir omgewingsgoedkeuring sowel as die vereiste omgewingsevaluering vir elkeen van die voorgenoemde kraglyne, wat nodig is vir die verbinding van die voorgestelde Kwagga WEFs met die nasionale elektriese netwerk.

Die meegaande elektriese netwerk infrastruktuur sluit in die installering en/of opgradering van toevoer plekke ("feeder bays"), busstawe "busbars", nuwe transformator plekke "transformer bays" (op tot 500 MVA) by die voorgestelde Eskom 132 kV Skakelstasie ("Switching Station") (DFFE Verw: 14-12-16-3-3-1-2464) en die voorgestelde Beaufort West 132 kV-400 kV Verbindingstasie ("Linking Station") (DFFE Verw: 14-12-16-3-3-2-925-1). Die voorgestelde kraglyne is geleë in die Beaufort West- en Prince Albert Plaaslike Munisipaliteite, wat val binne die Sentrale Karoo Distrik Munisipaliteit. Die korridor vir die sewe voorgestelde 132 kV kraglyne sal die volgende geaffekteerde plaas gedeeltes deursny:

- Farm Dwaalfontein Wes No. 377 / RE
- Farm Tyger Poort No. 376 / 3
- Farm Dwaalfontein Wes No. 377 / 1
- Farm Dwaalfontein No. 379 / RE
- Farm Wolve Kraal No. 17 / RE
- Farm Wolve Kraal No. 17 / 9
- Farm Muis Kraal No. 373 / 7
- Farm Witpoortje No. 16 / 1
- Farm Trakas Kuilen No. 15 / RE
- Farm Trakas Kuilen No. 15 / 1

Voorgestelde 132 kV Oorhoofse Kraglyne Route Gedeeltes	Langte
Tussen die Kwagga WEF 1 en die Eskom 132 kV Skakelstasie	9 km
Tussen die Kwagga WEF 2 en die Eskom 132 kV Skakelstasie	12 km
Tussen die Kwagga WEF 3 en die Eskom 132 kV Skakelstasie	25 km
Tussen die Kwagga WEF 1 en die Kwagga WEF 2	3 km
Tussen die Kwagga WEF 1 en die Kwagga WEF 3	16 km
Tussen die Kwagga WEF 2 en die Kwagga WEF 3	13 km
Tussen die Beaufort West 132 kV-400 kV Verbindingstasie en die Eskom 132 kV Skakelstasie	3 km

Die 7 x voorgestelde kraglyne projekte is onderhewig aan 'n **Basiese Evaluering ("BA")** proses ingevolge die Nasionale Omgewingsbestuurswet, 1998 (Wet 107 van 1998, soos gewysig) ("NEMA") en die nuutste 2014 Omgewingsimpak Studie ("EIA") Regulasies (soos gewysig), sowel as die gepubliseerde Omgewingsassesseringsprotokolle ingevolge die 2014 NEMA "EIA" Regulasies, soos gewysig en waar van toepassing (GG 43855 / GN 1150, 30 Oktober 2020 en GG 43110 / GN 320, 20 Maart 2020). Daarom sal sewe Aansoek vir "EA" en sewe afsonderlike "BA" verslae voorberei en ingedien word by die DFFE vir besluitneming. Dit word voorgestel dat sewe aparte EAs uitgereik word vir elkeen van die 132 kV kraglyne en meegaande infrastruktuur. Die voorgestelde projekte sal verskeie gelyste aktiwiteite aktiveer in terme van die 2014 NEMA "EIA" Regulasies (soos gewysig), met GN 327 LN 1: 11 as die hoof aktiwiteit. Kommentaar sal ook verkry word vanaf Erfenis Wes-Kaap ("Heritage Western Cape") ingevolge die Wet op Nasionale Erfenis Bronne (Wet 25 van 1999). Die "BA" prosesse sal ook bevestig of 'n Waterverbruiklisensie vereis word ingevolge die Nasionale Water Wet (Wet 36 van 1998), soos gewysig. 'n Geïntegreerde Publieke Deelname Proses sal daarom onderneem word vir die voorgestelde projekte.

Die Wetenskaplike Nywerheids- en Navorsingsraad (WNNR) ("CSIR") is aangestel as die onafhanklike Omgewingskonsultant ("EAP") om die "BA" prosesse vir die voorgestelde projekte te behartig en te bestuur namens die Projek Aansoeker. Geïnteresseerde en/of Belanghebbende Partye (G&BP) word hiermee in kennis gestel van die vrystelling van die Konsep "BA" Verslae vir 'n 30-dae kommentaar periode wat sal strek vanaf **11 Julie tot 11 Augustus 2022**. Die Konsep "BA" Verslae kan afgelaai word by hierdie webtuiste: <https://www.csir.co.za/environmental-impact-assessment>.

Sou u belangstel om te registreer as 'n G&BP, en om kommentaar te lewer op die Konsep "BA" Verslae, stuur asb u naam en kontakbesonderhede asook 'n aanduiding van u belangstelling in die aansoek, sowel as enige kommentaar, aan die "EAP" by die WNNR: Dhiveshni Moodley (Tel: 074 890 0103); E-pos: [ems@csir.co.za](mailto:ems@csir.co.za) (with "Kwagga EGI" as verwysing); Posadres: Posbus 320, Stellenbosch, 7599; Tel: +27 21 888 2400. Toekomstige korrespondensie rakende hierdie impakstudies sal aan alle geregistreerde G&BP versprei word.

**ISAZISO NGETHUBA LOKUTHATHA INXAXHEBA YOLUNTU KUVAVANYO LWEPEMBELELO NGOKUSINGQOKILEYO (INDALO) NGOPHUHLISO OLUCETYWAYO LWEZIBONELELO ZOKUDLULISA UMBANE (EGI) EZISIXHENXE EZIYI 132 KV EZIZO SETYENZISWA KWIZIKHULULO ZOKUPHEHLA UMBANE NGAMADLA OMOYA EZINTATHU (IKWAGGA WEF 1, KWAGGA WEF 2 AND KWAGGA WEF 3) NGASE-BEAUFORT WEST, ENTSHONA KOLONI**

Isaziso sikhutshwa ukuba i-ABO Wind renewable energies (Pty) Ltd inenjonko yokwakha izibonelelo zokudlulisa umbane (EGI) ezisixhenxe (7x) ezizo setyenziswa kwizikhululo zokuphehla umbane ngamandla omooya (Wind farms) ezintathu (Kwagga Wind Energy Facilities (WEFs) 1-3) kumazantsi ase Beaufort West, eNtshona Koloni. iSebe Lesizwe lezeNdalo (DFFE), linike imvume (Environmental Authorisation (EA)) yokwakha izikhululo zokuphehla umbane ngamandla omooya ezintathu iKwagga WEF 1 (DFFE Ref: 14-12-16-3-3-2-2070), Kwagga WEF 2 (DFFE Ref: 14-12-16-3-3-2-2071) kunye noKwagga WEF 3 (DFFE Ref: 14-12-16-3-3-2-2072) nge 7 ye Tshazimpunzi 2022.

Izibonelelo zokudlulisa umbane zibandakanya iintambo zodlulisa umbane ezintathu ngaphezulu, ifeeder bays, ibusbars, itransformer bays (500 MVA) ezintathu kwi Switching Station yeEskom 132 kV (DFFE Ref: 14-12-16-3-3-1-2464) kunye ne Beaufort West 132 kV-400 kV Linking Station (DFFE Ref: 14-12-16-3-3-2-925-1). Eziprojekthi zisixhenxe zikuMaspala wase Beaufort West kunye noMaspala i-Prince Albert (Kwagga WEF 2 and 3), ezikuMaspala wesithili iCentral Karoo. Iinkukacha zeprojekthi zinimkiwe apha ngezantsi:


- Farm Dwaalfontein Wes No. 377 / RE
- Farm Tyger Poort No. 376 / 3
- Farm Dwaalfontein Wes No. 377 / 1
- Farm Dwaalfontein No. 379 / RE
- Farm Wolve Kraal No. 17 / RE
- Farm Wolve Kraal No. 17 / 9
- Farm Muis Kraal No. 373 / 7
- Farm Witpoortje No. 16 / 1
- Farm Trakas Kuilen No. 15 / RE
- Farm Trakas Kuilen No. 15 / 1

Proposed 132 kV Overhead Transmission Powerline Route Sections	Length
Between the Kwagga WEF 1 and the Eskom 132 kV Switching Substation	9 km
Between the Kwagga WEF 2 and the Eskom 132 kV Switching Substation	12 km
Between the Kwagga WEF 3 and the Eskom 132 kV Switching Substation	25 km
Between the Kwagga WEF 1 and the Kwagga WEF 2	3 km
Between the Kwagga WEF 1 and the Kwagga WEF 3	16 km
Between the Kwagga WEF 2 and the Kwagga WEF 3	13 km
Between the Beaufort West 132 kV-400 kV Linking Station and the Eskom 132 kV Switching Substation	3 km

Inkqubo yokuVavanya nokuPhononongwa kweMpebelelo kokusiNgqongileyo (**Basic Assessment (BA)**) iyafuneka kwiprojekthi ecetywayo ngoko mihetho wesizwe wokulawula okusingqongileyo nendalo (NEMA umthetho 107 ka-1998, njengoko kushicilelweyo) kunye nemimiselo yovavanyo ye-EIA ka 2014 njengoko ishicilelweyo kunye ne (GG 43855 / GN 1150, 30 EyoDwarha (October) 2020 and GG 43110 / GN 320, 20 EyoKwindla (March) 2020). Isaziso so landela inkqubo ye BA imalunga novavanyo/umimiselo ye-EIA ka 2014 njengoko ishicilelweyo. Isidingo soVavanyo kwempebelelo lu yimisebenzi yeqweba ebalwe kwiMithethoNkqubo kaRhulumente GN 327 LN 1, ekuyiyi ehamba phambili. iSicelo sesigunyaziso sendalo esingqongileyo sizo fakwa kwiSebe Lesizwe lezeNdalo (DFFE) kunye ne BA Report kuze kufunaneke izimvo. Kuzafakwa iBA Report namphapha esicelo asixhenxe (7x) kuze kutmaneke iEA ezisixhenxe. Kwaye izimvo zizo funwa nakwi Heritage yase Ntshona Koloni ngokomthetho wemithombo yelifa lemvuli (umthetho 25 ka 1999). Inkqubo yokuhlola iimpembelelo yezendalo ngoku landela inkqubo ye BA izoqinisekisa udingo lwoGunyaziso lokusebenzisa amanzi ngoko mihetho wamanzi (Umthetho 36 k 1998, njengoko ishicilelweyo). Kuzokwenziwa inkqubo yokuthatha inxaxheba (PPP) edibeneyo ye projekthi zisixhenxe.

iCouncil for Scientific and Industrial Research (CSIR) iqeshwe yi-ABO Wind ukuba iphathe inkqubo ye BA. Amaqela achaphazelekayo nanomdla (I&APs) anikwa isaziso ngoqaliswa kwenkqubo yokuthatha inxaxheba yoluntu ye ntsoku ezingamashumi amathathu (30 days) yokunikezela izimvo nge Draft BA Reports zazi projekthi. Elithuba livulwe nge **11 EyoKhala (July) liphele 11 EyoThupha (August) 2022**. iDraft BA Reports zifumaneka apha <https://www.csir.co.za/environmental-impact-assessment>

Izicelo ezibhalileyo zokubhalisa njenge I&AP kwaye unikezele ngezimvo kwiProjekthi zithunyelwa ku Dhiveshni Moodley we CSIR; E-mail: [ems@csir.co.za](mailto:ems@csir.co.za); Postal Address: P.O. Box 320, Stellenbosch, 7599; Tel: 074 890 0103. CSIR Project Ref: Kwagga EGI. Ubhale igama lakho, iinkukacha zakho zoqhagamshelwano. Imbalhelwano yexesha elizayo kulenkqubo ye S&EIA zizo thunyelwa kwaba bhalisileyo nje ngamaqela achaphazelekayo nanomdla (I&APs).



**CSIR**  
Touching lives through innovation



## E. 4: I&AP DATABASE

No.	First Name	Surname	Company/ Organisation / Department	Notice of Release of Draft BA Reports for comment		Notice of Submission of Final BA Reports to the DFFE
				Email 1 (Letter 1)	SMS 1	
<b>ORGANS OF STATE</b>						
1.	Olivia	Mmatlala	Department of Forestry, Fisheries and Environment - Directorate: Integrated Environmental Authorisations	✓		
2.	Chantal	Engelbrecht	Department of Forestry, Fisheries and the Environment: IQ	✓	✓	
3.	Azrah	Essop	Department of Forestry, Fisheries and Environment - Directorate: Integrated Environmental Authorisations	✓		
4.	Sindiswa	Dlomo	Department of Forestry, Fisheries and the Environment: Integrated Environmental Authorisations	✓		
5.	Constance	Musemburi	Department of Forestry, Fisheries and the Environment: Integrated Environmental Authorisations	✓		
6.	Pamela	Kershaw	Department of Forestry, Fisheries and the Environment: Biodiversity and Conservation Directorate	✓		
7.	Mukondi	Masithi	Department of Forestry, Fisheries and the Environment: Biodiversity and Conservation Directorate	✓		
8.	Stanley	Tshitwamulomoni	Department of Forestry, Fisheries and the Environment: Biodiversity and Conservation Directorate	✓		



**DRAFT BASIC ASSESSMENT REPORT: Basic Assessment for the proposed construction of a 132 kV Overhead Powerline between the proposed Kwagga Wind Energy Facility 1 and the proposed Kwagga Wind Energy Facility 3, near Beaufort West in the Western Cape Province**

---

No.	First Name	Surname	Company/ Organisation / Department	Notice of Release of Draft BA Reports for comment		Notice of Submission of Final BA Reports to the DFFE
				Email 1 (Letter 1)	SMS 1	
9.	Olivia	Mmatlala	Department of Forestry, Fisheries and Environment - Directorate: Integrated Environmental Authorisations	✓		
10.	Booi	Thando	Department of Forestry, Fisheries and Environment - Directorate: Integrated Environmental Authorisations	✓		
11.	Shubane	Mahlatse	Department of Forestry, Fisheries and Environment - Directorate: Integrated Environmental Authorisations	✓		
12.	Rabothata	Mmatlala	Department of Forestry, Fisheries and Environment - Directorate: Integrated Environmental Authorisations	✓		
13.	Chantel	Schwartz	National Department of Water and Sanitation	✓		
14.	Julliet	Mahlangu	Department of Forestry, Fisheries and the Environment: Integrated Environmental Authorisations (Project Case Officer)	✓		
15.	Nyiko	Nkosi	Department of Forestry, Fisheries and the Environment: Integrated Environmental Authorisations (Project Case Officer)	✓		
16.	Gavin	Benjamin	Western Cape Department of Environmental Affairs and Development Planning (DEA&DP)	✓		
17.	Jessica	Christie	Western Cape DEA&DP, Directorate: Development Management (Region 3)	✓		
18.	Adri	La Meyer	Western Cape DEA&DP	✓		
19.	Tania	De Waal	DEA&DP: Spatial Planning	✓		

**DRAFT BASIC ASSESSMENT REPORT: Basic Assessment for the proposed construction of a 132 kV Overhead Powerline between the proposed Kwagga Wind Energy Facility 1 and the proposed Kwagga Wind Energy Facility 3, near Beaufort West in the Western Cape Province**

---

No.	First Name	Surname	Company/ Organisation / Department	Notice of Release of Draft BA Reports for comment		Notice of Submission of Final BA Reports to the DFFE
				Email 1 (Letter 1)	SMS 1	
20.	Raudhiyah	Dien	DEA&DP: Spatial Planning	✓		
21.	Marbe	Coetzee	Western Cape DEA&DP	✓		
22.	Andrea	Thomas	Western Cape DEA&DP	✓		
23.	Deano	Wevers	Western Cape DEA&DP	✓		
24.	Keshni	Rughoobeer	Western Cape DEA&DP, Directorate: Development Facilitation	✓		
25.	Nabeelah	Achmat	Western Cape DEA&DP, Directorate: Pollution and Chemicals Management	✓		
26.	Etienne	Roux	Western Cape DEA&DP, Directorate: Waste Management	✓		
27.	Hadjira	Peinke	Western Cape DEA&DP, Directorate: Waste Management	✓		
28.	Muneeb	Baderoon	Western Cape DEA&DP, Directorate: Waste Management	✓		
29.	Deon	Stoltz	Western Cape DEA&DP, Directorate: Air Quality Management	✓		
30.	Mpendulo	Dlamini	Western Cape DEA&DP, Directorate: Air Quality Management	✓		
31.	Ryan	Apolles	Western Cape DEA&DP, Directorate: Development Facilitation	✓		
32.	Mashudu	Kgaphola	National Department of Water and Sanitation	✓	✓	



**DRAFT BASIC ASSESSMENT REPORT: Basic Assessment for the proposed construction of a 132 kV Overhead Powerline between the proposed Kwagga Wind Energy Facility 1 and the proposed Kwagga Wind Energy Facility 3, near Beaufort West in the Western Cape Province**

---

No.	First Name	Surname	Company/ Organisation / Department	Notice of Release of Draft BA Reports for comment		Notice of Submission of Final BA Reports to the DFFE
				Email 1 (Letter 1)	SMS 1	
33.	Rashid	Khan	Department of Water and Sanitation (Western Cape)	✓	✓	
34.	Melissa	Lintnaar-Strauss	Department of Water and Sanitation (Western Cape)	✓		
35.	Karl	Naude	Director PA Policy and Management Effectiveness	✓		
36.	Rofhiwa	Magodi	DFFE Directorate: Protected Areas Planning and Management Effectiveness	✓		
37.	Thivhulawi	Nethononda	DFFE Directorate: Protected Areas Planning and Management Effectiveness	✓		
38.	Seoka	Lekota	DFFE Directorate: Biodiversity Conservation	✓		
39.	Portia	Makitla	DFFE Directorate: Biodiversity Conservation	✓		
40.	Aulicia	Maifo	DFFE Directorate: Biodiversity Conservation	✓		
41.	Mary Jean	Gabriel	Department of Agriculture, Forestry and Fisheries	✓		
42.	Anneliza	Collet	Department of Agriculture, Forestry and Fisheries	✓		
43.	Andile	Hawes	Department of Agriculture, Forestry and Fisheries	✓		
44.	Mashudu	Marubin	Department of Agriculture, Forestry and Fisheries	✓	✓	
45.	Jacoline	Mans	Department of Agriculture, Forestry and Fisheries	✓	✓	

**DRAFT BASIC ASSESSMENT REPORT: Basic Assessment for the proposed construction of a 132 kV Overhead Powerline between the proposed Kwagga Wind Energy Facility 1 and the proposed Kwagga Wind Energy Facility 3, near Beaufort West in the Western Cape Province**

---

No.	First Name	Surname	Company/ Organisation / Department	Notice of Release of Draft BA Reports for comment		Notice of Submission of Final BA Reports to the DFFE
				Email 1 (Letter 1)	SMS 1	
46.	Thandeka	Gwala	Department of Agriculture, Forestry and Fisheries - Assistant Director: Forestry Regulations and Support Directorate: Forestry Management Other Regions (Western Cape)	✓	✓	
47.	Masithanda ze	Falitenjwa	Department of Agriculture, Forestry and Fisheries (DAFF)	✓		
48.	Thando	Ndudula	Department of Agriculture, Forestry and Fisheries (DAFF)	✓		
49.	Thoko	Buthelezi	Department of Agriculture, Forestry and Fisheries: AgriLand Liaison office	✓		
50.	Melanie	Koen	DFFE: Forestry Regulations & Support	✓		
51.	NFA western Cape		DFFE: Forestry Regulations & Support	✓		
52.	Cor	van der Walt	Western Cape Department of Agriculture	✓		
53.	Paul	Herselman	Western Cape Department of Agriculture	✓		
54.	Phyllis	Pienaar	Western Cape Department of Agriculture	✓		
55.	Ndzilili	Mandla	Ministry of Environment and Nature Conservation	✓	✓	
56.	Mpho	Mabaso	Department of Energy (DoE): Director: Renewable Energies			
57.	Solly	Fourie	Western Cape Department of Economic Development and Tourism: Head of Department	✓		



**DRAFT BASIC ASSESSMENT REPORT: Basic Assessment for the proposed construction of a 132 kV Overhead Powerline between the proposed Kwagga Wind Energy Facility 1 and the proposed Kwagga Wind Energy Facility 3, near Beaufort West in the Western Cape Province**

No.	First Name	Surname	Company/ Organisation / Department	Notice of Release of Draft BA Reports for comment		Notice of Submission of Final BA Reports to the DFFE
				Email 1 (Letter 1)	SMS 1	
58.	The Director General	The Director General	National Department of Economic Development	✓		
59.	Lerato	Mokgwatheng	Eskom Holdings Limited - Senior Environmental Advisor Grid Planning & Development: Land and Rights Department Transmission Division	✓	✓	
60.	John	Geeringh	Senior Consultant Environmental Management: Eskom GC: Land Development & EIA Review	✓	✓	
61.	Phindile	Dlamini	Eskom Holdings Limited	✓		
62.	Danie	Bloem	Eskom Holdings Limited	✓		
63.	Pierre	Snyman	Eskom Holdings Limited	✓		
64.	Rodger	Peense	Eskom Holdings Limited	✓		
65.	Tiny	Salaze	Eskom Holdings Limited	✓		
66.	Adrian	Adrian Francis	Eskom Holdings Limited	✓		
67.	Mamokete	Mafumo	Eskom Transmission Land Development, Senior Environmental Advisor	✓	✓	
68.	Luchen	Reddy	Eskom Holdings Limited (Liaison to Department of Science and Technology)	✓		
69.	John	Geeringh	Senior Consultant Environmental Management: Eskom GC: Land Development & EIA Review	✓	✓	

**DRAFT BASIC ASSESSMENT REPORT: Basic Assessment for the proposed construction of a 132 kV Overhead Powerline between the proposed Kwagga Wind Energy Facility 1 and the proposed Kwagga Wind Energy Facility 3, near Beaufort West in the Western Cape Province**

---

No.	First Name	Surname	Company/ Organisation / Department	Notice of Release of Draft BA Reports for comment		Notice of Submission of Final BA Reports to the DFFE
				Email 1 (Letter 1)	SMS 1	
70.	Owen	Peters	Eskom Holdings Limited: Land and Development	✓		
71.	Elroy	Saaynan	Eskom Holdings Limited		✓	
72.	Andrea	Van Gensen	Eskom Holdings Limited	✓		
73.	Justine	Wyngaardt	Eskom Holdings Limited: Distribution - Western Operating Unit	✓		
74.	Ambrose	Hector	Eskom Holdings Limited: Kappa / Brandkop	✓		
75.	Andre	Crous	Eskom Holdings Limited: Telecommunications	✓		
76.	Fanie	Berg	Eskom Holdings Limited: Senior Engineer	✓	✓	
77.	Krishna	Naidoo	Eskom Holdings Limited			
78.	Christo	Badenhorst	Eskom: Line Engineering	✓		
79.	Kgauta	Mokoena	Director: Mine Environmental Research and Sustainable Development	✓		
80.	Duduzile	Kunene	Western Cape Department of Mineral Resources: Regional Manager	✓		
81.	Jacob	Dikgang	Department of Transport	✓		
82.	Ben	Welman	Western Cape Department of Transport and Public Works			



**DRAFT BASIC ASSESSMENT REPORT: Basic Assessment for the proposed construction of a 132 kV Overhead Powerline between the proposed Kwagga Wind Energy Facility 1 and the proposed Kwagga Wind Energy Facility 3, near Beaufort West in the Western Cape Province**

---

No.	First Name	Surname	Company/ Organisation / Department	Notice of Release of Draft BA Reports for comment		Notice of Submission of Final BA Reports to the DFFE
				Email 1 (Letter 1)	SMS 1	
83.	Jacqui	Gooch	Western Cape Department of Transport and Public Works: Strategy, Planning and Co-ordination	✓		
84.	Wendy	Kiva	Western Cape Department of Transport and Public Works	✓		
85.	Schalk	Carstens	Western Cape Department of Transport and Public Works	✓		
86.	Grace	Swanepoel	Western Cape Department of Transport and Public Works	✓		
87.	Lyle	Martin	Western Cape Government: Transport and Public Works - Roads			
88.	Kate	Richardson	South African Bat Assessment Association: Chairperson	✓		
89.	Caroline	Lötter	South African Bat Assessment Association: Secretary	✓		
90.	Andrew	September	Heritage Western Cape		✓	
91.	Colette	Scheermeyer	Heritage Western Cape	✓		
92.	Zwelibanzi	Shiceka	Heritage Western Cape (Assistant Director)	✓		
93.	Ceo Heritage Western Cape		Heritage Western Cape	✓		
94.	Stephanie-Anne	Barnardt	Heritage Western Cape: Heritage Officer (Archaeologist) - Heritage Resource Management Services	✓		
95.	Waseefa	Dhansay	Heritage Western Cape: Assistant Director: Professional Services, Heritage Resource Management Services	✓		

**DRAFT BASIC ASSESSMENT REPORT: Basic Assessment for the proposed construction of a 132 kV Overhead Powerline between the proposed Kwagga Wind Energy Facility 1 and the proposed Kwagga Wind Energy Facility 3, near Beaufort West in the Western Cape Province**

---

No.	First Name	Surname	Company/ Organisation / Department	Notice of Release of Draft BA Reports for comment		Notice of Submission of Final BA Reports to the DFFE
				Email 1 (Letter 1)	SMS 1	
96.	General SAHRA		South African Heritage Resource Agency	✓		
97.	Nokukhanya	Khumalo	South African Heritage Resource Agency	✓		
98.	Ragna	Redelstorff	South African Heritage Resource Agency	✓		
99.	Natasha	Higgit	South African Heritage Resource Agency	✓	✓	
100.	Lucius	Moolman	South African National Parks: Manager: Karoo NP & SKA core protected area	✓		
101.	Howard	Hendricks	South African National Parks: Snr GM: Policy & Governance Conservation Services Division	✓		
102.	Helga	van der Merwe	SAEON Arid Lands Node	✓		
103.	Lucky	Legodi	Department of Rural Development and Land Reform	✓		
104.	Gerhard	De Bruin	Department of Rural Development and Land Reform	✓		
105.	Chantal	Harigobin	South African Local Government Association: Western Cape	✓		
106.	Herman	Coetzee	Transnet: Radio Communication Department	✓	✓	
107.	Devon	Govender	Department of Cape Town	✓	✓	
108.	Nicole	Abrahams	South African National Roads Agency SOC Ltd: Environmental coordinator	✓		



DRAFT BASIC ASSESSMENT REPORT: Basic Assessment for the proposed construction of a 132 kV Overhead Powerline between the proposed Kwagga Wind Energy Facility 1 and the proposed Kwagga Wind Energy Facility 3, near Beaufort West in the Western Cape Province

No.	First Name	Surname	Company/ Organisation / Department	Notice of Release of Draft BA Reports for comment		Notice of Submission of Final BA Reports to the DFFE
				Email 1 (Letter 1)	SMS 1	
109.	Colene	Runkel	South African National Roads Agency SOC Ltd: Northern Cape-Western region	✓		
110.	Gawie	Bestbier	Civil Aviation Authority	✓		
111.	Lizell	Stroh	Civil Aviation Authority	✓		
112.	Chinga	Mazhetese	Civil Aviation Authority	✓		
113.	Simphiwe	Masilela	Civil Aviation Authority: Inspector: Obstacles Procedure Design & Cartography	✓		
<b>MUNICIPAL AUTHORITIES</b>						
114.	Johannes	Jonkers	Central Karoo District Municipality: Corporate and Strategic Services Director	✓		
115.	Andre	Koopman	Central Karoo District Municipality: Senior Manager- Roads Infrastructure Services	✓		
116.	Barbra	Koopman	Central Karoo District Municipality: Strategic Services Manager	✓		

**DRAFT BASIC ASSESSMENT REPORT: Basic Assessment for the proposed construction of a 132 kV Overhead Powerline between the proposed Kwagga Wind Energy Facility 1 and the proposed Kwagga Wind Energy Facility 3, near Beaufort West in the Western Cape Province**

---

No.	First Name	Surname	Company/ Organisation / Department	Notice of Release of Draft BA Reports for comment		Notice of Submission of Final BA Reports to the DFFE
				Email 1 (Letter 1)	SMS 1	
117.	Gerrit	van Zyl	Central Karoo District Municipality: Municipal Environmental Health Manager	✓		
118.	Administration		Beaufort West Local Municipality	✓		
119.	Denwin	van Turha	Beaufort West Local Municipality: Acting Director Infrastructure Services	✓		
120.	Vuyokazi	Ruiters	Beaufort West Local Municipality: Waste Manager	✓		
121.	Kosie	Haarhof	Beaufort West Local Municipality: Municipal Manager	✓		
122.	Quinton	Louw	Beaufort West Local Municipality: Deputy Executive Mayor	✓	✓	
123.	October	Haarvoor	Beaufort West Local Municipality (Ward 2 Councillor)	✓	✓	
124.	Jacob	van der Linde	Beaufort West Local Municipality (Ward 7 Councillor)	✓		
125.	Simon van der Stel Foundation				✓	



DRAFT BASIC ASSESSMENT REPORT: Basic Assessment for the proposed construction of a 132 kV Overhead Powerline between the proposed Kwagga Wind Energy Facility 1 and the proposed Kwagga Wind Energy Facility 3, near Beaufort West in the Western Cape Province

No.	First Name	Surname	Company/ Organisation / Department	Notice of Release of Draft BA Reports for comment		Notice of Submission of Final BA Reports to the DFFE
				Email 1 (Letter 1)	SMS 1	
126.	Anneleen	Vorster	Prince Albert Local Municipality: Municipal Manager	✓		
127.	Abridon	Sass	Prince Albert Local Municipality: Administrator to the Municipal Manager	✓		
128.	Linda	Jacquet	Prince Albert Local Municipality (Ward 2 Councillor)	✓		
129.	Prince Albert Cultural Foundation		Prince Albert Cultural Foundation	✓		
130.	Judy	Maguire	Prince Albert Cultural Foundation	✓		
131.	Natie	de Swardt	Prince Albert Cultural Foundation	✓		
<b>GENERAL STAKEHOLDERS</b>						
132.	Tania	Anderson	Birdlife South Africa	✓		
133.	Simon	Gear	Birdlife South Africa	✓		
134.	Samantha	Ralston	Birdlife South Africa (Western Region)	✓	✓	
135.	Mona	Lakhani	Endangered Wildlife Trust: Wildlife and Energy Programme	✓		

**DRAFT BASIC ASSESSMENT REPORT: Basic Assessment for the proposed construction of a 132 kV Overhead Powerline between the proposed Kwagga Wind Energy Facility 1 and the proposed Kwagga Wind Energy Facility 3, near Beaufort West in the Western Cape Province**

---

No.	First Name	Surname	Company/ Organisation / Department	Notice of Release of Draft BA Reports for comment		Notice of Submission of Final BA Reports to the DFFE
				Email 1 (Letter 1)	SMS 1	
136.	Mabule	Mokhine	Earthlife Africa	✓		
137.	Constant	Hoogstad	Endangered Wildlife Trust	✓		
138.	Endangered Wildlife Trust		Endangered Wildlife Trust: EIA	✓		
139.	Christy	B.	Endangered Wildlife Trust		✓	
140.	Lourens	Leeuwner	Endangered Wildlife Trust: Renewable Energy Project Manager	✓		
141.	Harriet	Davies-Mostert	Endangered Wildlife Trust	✓		
142.	Morgan	Griffiths	Wildlife and Environmental Society of South Africa: Environmental Governance Programme Manager	✓		
143.	Morne	Du Plessis	World Wide Fund South Africa	✓		
144.	Stephanie	Kot	African Clean Energy Developments (ACED)	✓		
145.	Carl	Opperman	Agri Western Cape	✓		
146.	Japie	Grobler	AgriSA	✓		
147.	Janse	Rabie	AgriSA			

**DRAFT BASIC ASSESSMENT REPORT: Basic Assessment for the proposed construction of a 132 kV Overhead Powerline between the proposed Kwagga Wind Energy Facility 1 and the proposed Kwagga Wind Energy Facility 3, near Beaufort West in the Western Cape Province**

---

No.	First Name	Surname	Company/ Organisation / Department	Notice of Release of Draft BA Reports for comment		Notice of Submission of Final BA Reports to the DFFE
				Email 1 (Letter 1)	SMS 1	
148.	Rebecca	Thomas	Mainstream Renewable energies: Senior Development Manager			
149.	Adre	Taillard	Mainstream Renewable energies (Pty) Ltd			
150.	Stephan	Jacobs	SLR Consulting			
151.	Liandra	Scott-Shaw	SLR Consulting			
152.	Jaco	Nel	AVIC International Flight Training Academy: Safety Manager			
153.	Johann	Lanz		✓		
154.	Brett	Williams	Safetrain cc T/A Safetech	✓		
155.	Noel	van Rooyen	Ekotrust cc	✓	✓	
156.	Menno	Klapwijk	Bapela Cave Klapwijk cc	✓		



**DRAFT BASIC ASSESSMENT REPORT: Basic Assessment for the proposed construction of a 132 kV Overhead Powerline between the proposed Kwagga Wind Energy Facility 1 and the proposed Kwagga Wind Energy Facility 3, near Beaufort West in the Western Cape Province**

---

No.	First Name	Surname	Company/ Organisation / Department	Notice of Release of Draft BA Reports for comment		Notice of Submission of Final BA Reports to the DFFE
				Email 1 (Letter 1)	SMS 1	
157.	Veronique	Fyfe	G7 Renewable Energies (Pty) Ltd			
158.	Zakiya	Abrahams	WKN Windcurrent SA (Pty) Ltd			
159.	Phillip	De Lange	Air Traffic Navigation Services: Manager of Western and Northern Cape	✓		
160.	Praneel	Ruplal	Independent Communications Authority of South Africa			
161.	Ashleigh	Sibanda	Knowledge Pele, Programme Manager	✓	✓	
162.	Johan	Koegelenberg	Sentech Broadcast Coverage Planner: RF Networks. Manager: Measurements and GIS		✓	
163.	Frank	Creese	Sentech Inc.:Senior TCC Manager: Operations and Maintenance - Western Region)		✓	
164.	Serame	Motlhake	Network Planning Manager	✓		
165.	Alisha	Pretorius	Sentech	✓		

**DRAFT BASIC ASSESSMENT REPORT: Basic Assessment for the proposed construction of a 132 kV Overhead Powerline between the proposed Kwagga Wind Energy Facility 1 and the proposed Kwagga Wind Energy Facility 3, near Beaufort West in the Western Cape Province**

---

No.	First Name	Surname	Company/ Organisation / Department	Notice of Release of Draft BA Reports for comment		Notice of Submission of Final BA Reports to the DFFE
				Email 1 (Letter 1)	SMS 1	
166.	Anne	Flynn	Falcon Oil and Gas Ltd	✓		
167.	Coert	Smit	BreedeNet: Network Operations Director	✓		
168.	Ferdi	Smit	System Specialist Radar   Technical Services Cape Town International Airport	✓	✓	
169.	Danie	Erasmus	SA Police: Police Radio Communications	✓		
170.	Abel	Hanekom	Supervisor Police Radio Communications	✓		
171.	Lt Colonel A.	De Reuck	SA Police: Police Radio Communications	✓		
172.	Department of Defence/ SA Army		Department of Defence/ SA Army	✓		
173.	Department of Defence/ SA Army		Department of Defence/ SA Army	✓		

DRAFT BASIC ASSESSMENT REPORT: Basic Assessment for the proposed construction of a 132 kV Overhead Powerline between the proposed Kwagga Wind Energy Facility 1 and the proposed Kwagga Wind Energy Facility 3, near Beaufort West in the Western Cape Province

No.	First Name	Surname	Company/ Organisation / Department	Notice of Release of Draft BA Reports for comment		Notice of Submission of Final BA Reports to the DFFE
				Email 1 (Letter 1)	SMS 1	
174.	Colonel Loy	de Jager	Department of Defence/ SA Army	✓	✓	
175.	Phillip	De Lange	Manager: Technical Support   Technical Services Cape Town International Airport	✓	✓	
176.	Johan	Schoeman	Altech Fleetcall	✓		
177.	Reuben	Maroga	SOLA: Permitting Specialist			
178.	Frans	Swart	Altech Netstar	✓		
179.	Libby	Hirshon	Biotherm Energy	✓		
180.	Vivien	Kiewitz	Cell C Tele Communications			
181.	Brian	Joubert	Cell C Tele Communications			
182.	D.	Ngwenya	Independent Communications Authority of South Africa	✓		



**DRAFT BASIC ASSESSMENT REPORT: Basic Assessment for the proposed construction of a 132 kV Overhead Powerline between the proposed Kwagga Wind Energy Facility 1 and the proposed Kwagga Wind Energy Facility 3, near Beaufort West in the Western Cape Province**

---

No.	First Name	Surname	Company/ Organisation / Department	Notice of Release of Draft BA Reports for comment		Notice of Submission of Final BA Reports to the DFFE
				Email 1 (Letter 1)	SMS 1	
183.	Charles	Van Reenen	MTN – Innovation Centre Engineering	✓		
184.	Renier	Nel	MTN South Africa Tele Communications	✓		
185.	Pieter	Buys	National Energy Regulator of South Africa (NERSA)			
186.	Sweetness	Maletse	National Energy Regulator of South Africa (NERSA)	✓		
187.	Brian	Dryer	Neotell Tele Communications	✓		
188.	Dr Warren	Joubert	South African Weather Services	✓		
189.	Mlungisi	Ngwenya	South African Weather Services			
190.	Lynne	Hannay	Shell South Africa Exploration (Pty) Ltd	✓		
191.	Administration		South African Weather Services	✓		

DRAFT BASIC ASSESSMENT REPORT: Basic Assessment for the proposed construction of a 132 kV Overhead Powerline between the proposed Kwagga Wind Energy Facility 1 and the proposed Kwagga Wind Energy Facility 3, near Beaufort West in the Western Cape Province

No.	First Name	Surname	Company/ Organisation / Department	Notice of Release of Draft BA Reports for comment		Notice of Submission of Final BA Reports to the DFFE
				Email 1 (Letter 1)	SMS 1	
192.	Chris	Coetzee	Southern African Large Telescope	✓		
193.	Ferdi	Smit	Southern African Large Telescope	✓		
194.	Adrian	Tiplady	Southern African Large Telescope	✓		
195.	Thato	Nape	Square Kilometre Array South Africa	✓		
196.	Musa	Baloye	Square Kilometre Array South Africa	✓		
197.	Busang	Sethole	Square Kilometre Array South Africa	✓		
198.	Selaelo	Matlhane	Square Kilometre Array South Africa (SKA)	✓		
199.	Adriana	Chickesh	Sustainable Energy Society of Southern Africa (SESSA)	✓		
200.	Keverne	Thurling	Telkom Tele Communications		✓	

DRAFT BASIC ASSESSMENT REPORT: Basic Assessment for the proposed construction of a 132 kV Overhead Powerline between the proposed Kwagga Wind Energy Facility 1 and the proposed Kwagga Wind Energy Facility 3, near Beaufort West in the Western Cape Province

No.	First Name	Surname	Company/ Organisation / Department	Notice of Release of Draft BA Reports for comment		Notice of Submission of Final BA Reports to the DFFE
				Email 1 (Letter 1)	SMS 1	
201.	Leonard	Shaw	Telkom Tele Communications	✓	✓	
202.	Johan	Smit	Telkom Tele Communications (Executive/Senior Specialist Regulatory Affairs)	✓	✓	
203.	Craig	Barnes	Vodacom South Africa Tele Communications	✓		
204.	Nico	Fourie	Vodacom South Africa Tele Communications	✓		
205.	Danie	Oosthuizen	Vodacom South Africa Tele Communications	✓		
206.	Information		Breede-Gouritz Catchment Management Agency: Information	✓		
207.	Elkerine	Rossouw	Breede-Gouritz Catchment Management Agency	✓		
208.	Makhosi	Mthimkhulu	Breede-Gouritz Catchment Management Agency	✓		
209.	Andiswa	Sam	Breede-Gouritz Catchment Management Agency	✓		



DRAFT BASIC ASSESSMENT REPORT: Basic Assessment for the proposed construction of a 132 kV Overhead Powerline between the proposed Kwagga Wind Energy Facility 1 and the proposed Kwagga Wind Energy Facility 3, near Beaufort West in the Western Cape Province

No.	First Name	Surname	Company/ Organisation / Department	Notice of Release of Draft BA Reports for comment		Notice of Submission of Final BA Reports to the DFFE
				Email 1 (Letter 1)	SMS 1	
210.	Zama	Mbunquka	Breede-Gouritz Catchment Management Agency			
211.	Noncedo	Lesele	Breede-Gouritz Catchment Management Agency			
212.	Fabion	Smith	Breede-Gouritz Catchment Management Agency	✓	✓	
<b>AFFECTED AND ADJACENT LANDOWNERS</b>						
213.	Ignatius Bekker Trust (represented by Rothner Bekker)		Landowner	✓	✓	
214.	Ignatius Bekker Trust (represented by Rothner Bekker)		Landowner	✓	✓	
215.	Bernardus	Nigrini	Landowner	✓	✓	
216.	Lotini Trust (represented by HJ van Daalen)		Landowner	✓	✓	
217.	Ghaties Snyman Familietrust		Landowner	✓	✓	

DRAFT BASIC ASSESSMENT REPORT: Basic Assessment for the proposed construction of a 132 kV Overhead Powerline between the proposed Kwagga Wind Energy Facility 1 and the proposed Kwagga Wind Energy Facility 3, near Beaufort West in the Western Cape Province

No.	First Name	Surname	Company/ Organisation / Department	Notice of Release of Draft BA Reports for comment		Notice of Submission of Final BA Reports to the DFFE
				Email 1 (Letter 1)	SMS 1	
	(represented by Ghaties Snyman)					
218.	Millennium Trust (represented by Dirk Lamprecht)		Landowner	✓	✓	
219.	PSP Timber Ind (Pty) Ltd (represented by Constant de Waal)		Landowner	✓	✓	
220.	Kevin	van Wyk	Landowner	✓	✓	
221.	Willie	Barnard	Adjacent Landowners		✓	
222.	Jordi	van Hasselt	Adjacent Landowners		✓	
223.	Fanus	Maree	Adjacent Landowners		✓	
224.	Francois	Potgieter	Adjacent Landowners		✓	
225.	Lodewyk	Strydom	Adjacent Landowners		✓	

## E. 5: PROOF OF SUBMISSION OF THE NOTIFICATION OF INTENT TO DEVELOP (NID) TO HERITAGE WESTERN CAPE (HWC)



Page 1 of 9

### APPLICATION FORM NOTIFICATION OF INTENT TO DEVELOP (NID) SECTION 38 (1) AND SECTION 38 (8)

**Heritage Western Cape Reference No:**  
To be completed by the applicant

22050907

Completion of this form is required by Heritage Western Cape for the initiation of all impact assessment processes under Section 38 (1) & (8) of the National Heritage Resources Act (NHRA)

*As per Section 38 (1) (e) of the NHRA, submission of the NID must be initiated at the earliest stage of development. Should the development trigger any other legislation, practitioners may submit the NID without formal submission to other statutory bodies in order to comply with the NHRA.*

*This form is to be read in conjunction with the HWC Notification of Intent to Develop, Heritage Impact Assessment, (Pre-Application) Basic Assessment Reports, Scoping Reports and Environmental Impact Assessments, Guidelines for Submission to HWC*

Whilst it is not a requirement, it may expedite processes and in particular avoid calls for additional information if certain of the information required in this form is provided by a heritage specialist/s with the necessary qualifications, skills and experience. All sections of the form must be completed in order to deem the application to be complete.

Making an incorrect statement or providing incorrect information may result in all or part of the application having to be reconsidered by HWC in the future, or submission of a new application.

The following information is to be included upon submission to HWC:

1. Proof of payment with correct reference number
2. Completed and signed application form – the application form must be completed in full in order to be considered
3. Power of Attorney
4. Locality Map
5. Images of the site and its context
6. Additional information pertaining to the heritage of the site

Application and associated documentation to be emailed to [ceoheritage@westerncape.gov.za](mailto:ceoheritage@westerncape.gov.za)

#### A. APPLICABILITY OF THE NATIONAL ENVIRONMENTAL MANAGEMENT ACT (NEMA)

Department of Environmental Affairs Development Planning (Western Cape); Department of Mineral Resources (National); Department of Environmental Affairs (National);  
Reference Number (if applicable):

Please tick the applicable section:

This application is made in terms of Section 38(8) of the NHRA and an application under NEMA has been made to the following authority: National Department of Forestry, Fisheries and the Environment (DFFE)

This development will not require a NEMA application.



DRAFT BASIC ASSESSMENT REPORT: Basic Assessment for the proposed construction of a 132 kV Overhead Powerline between the proposed Kwagga Wind Energy Facility 1 and the proposed Kwagga Wind Energy Facility 3, near Beaufort West in the Western Cape Province

---

Page 2 of 9

<b>B. BASIC DETAILS</b>
-------------------------

**PROPERTY DETAILS:**

Name of property:	
Street address or location (eg: off R44): <b>Of N12 and local gravel roads</b>	
Erf or farm number/s: Please see attached list.	Coordinates: S 32° 56' 00" E 22° 40' 00" (A logical centre point. Format based on WGS84.)
Town or District: Beaufort West and Prince Albert Magisterial Districts	Municipality: Beaufort West and Prince Albert
Extent of property: Please see attached list.	Current use: Agriculture (livestock grazing)
Predominant land use/s of surrounding properties: Agriculture (livestock grazing)	

**REGISTERED OWNER OF PROPERTY:**

Name and Surname: Please see attached consent letters and ownership details.		
Address:		
Telephone:	Cell:	E-mail:
<b>APPLICANT/ AUTHORISED AGENT:</b>		
Name and Surname: <b>Robert Invernizzi</b>		
Address: <b>Unit B1, Mayfair Square, Century Way, Century City, Cape Town 7441</b>		
Telephone: <b>021 180 3672</b>	Cell: <b>073 265 8575</b>	E-mail: <b>Rob.Invernizzi@abo-wind.com</b>

By the submission of this form and all material submitted in support of this notification (ie: 'the material'), all applicant parties acknowledge that they are aware that the material and/or parts thereof will be put to the following uses and consent to such use being made: filing as a public record; presentations to committees, etc; inclusion in databases; inclusion on and downloading from websites; distribution to committee members and other stakeholders and any other use required in terms of powers, functions, duties and responsibilities allocated to Heritage Western Cape under the terms of the National Heritage Resources Act. Should restrictions on such use apply or if it is not possible to copy or lift information from any part of the digital version of the material, the material will be returned unprocessed. All sections of the form have been completed.

Signature of Owner:

Date:

Should the owner not be able to sign, the applicants/ agents must attach copy of power of attorney to this form.

Signature of Applicant/ Authorised Agent:

Date:



10/5/2022

Applicants/ agents must attach copy of power of attorney to this form.

**C. DEVELOPMENT DETAILS:**

Please indicate below which of the following Sections of the National Heritage Resources Act, or other legislation has triggered the need for notification of intent to develop.	
<input type="checkbox"/>	S38(1)(a) Construction of a road, wall, powerline, pipeline, canal or other similar form of linear development or barrier over 300m in length.
<input type="checkbox"/>	S38(1)(b) Construction of a bridge or similar structure exceeding 50m in length.
<input type="checkbox"/>	S38(1)(d) Rezoning of a site exceeding 10 000m <sup>2</sup> in extent.
<input type="checkbox"/>	S38(1)(c) Any development or activity that will change the character of a site -
	<input type="checkbox"/> (i) exceeding 5 000m <sup>2</sup> in extent;
	<input type="checkbox"/> (ii) involving three or more existing erven or subdivisions thereof;
	<input type="checkbox"/> (iii) involving three or more erven or divisions thereof which have been consolidated within the past five years.
	If you have checked any of the three boxes above, describe how the proposed development will change the character of the site:
X	<p>Other triggers, eg: in terms of other legislation, (ie: National Environment Management Act, etc.) Please set out details:</p> <p>Under NEMA and the 2014 EIA Regulations (as amended), the project requires a Basic Assessment process.</p>
If an impact assessment process has also been / will be initiated in terms of other legislation please provide the following information:	
Authority / government department (ie: consenting authority) to which information has been /will be submitted for final decision: <b>National Department of Forestry, Fisheries and the Environment (DFFE)</b>	
Present phase at which the process with that authority stands: <b>Pre-application</b>	
Provide a <b>full</b> description of the nature and extent of the proposed development or activity including its potential impacts:	
<p>ABO Wind renewable energies (Pty) Ltd ("the Developer") is proposing the construction of seven 132 kV overhead transmission powerlines in support of the proposed Kwagga Wind Energy Facility (WEF) 1 (DFFE Ref: 14-12-16-3-3-2-2070), Kwagga WEF 2 (DFFE Ref: 14-12-16-3-3-2-2071) and Kwagga WEF 3 (DFFE Ref: 14-12-16-3-3-2-2072), near Beaufort West in the Western Cape. The DFFE has granted Environmental Authorisation (EA)</p>	

for the proposed Kwagga WEF 1, Kwagga WEF 2 and Kwagga WEF 3 on 7 April 2022.

The seven proposed 132 kV overhead transmission powerlines will facilitate the connection of the proposed Kwagga WEFs 1-3 to the national grid via the proposed Eskom 132 kV Switching Substation (DFFE Ref: 14-12-16-3-3-1-2464) and the proposed Beaufort West 132 kV-400 kV Linking Station (DFFE Ref: 14-12-16-3-3-2-925-1).

It is understood that the proposed Eskom 132 kV Switching Substation and the proposed Beaufort West 132 kV-400 kV Linking Station (DFFE Ref: 14-12-16-3-3-2-925-1) will be constructed by South Africa Mainstream Renewable Power Developments (Pty) Ltd ("Mainstream") in support of their Beaufort West WEF (DFFE Ref: 12-12-20-1784-1-AM2) and the Trakas WEF (DFFE Ref: 12-12-20-1784-2-AM2) that are to be located on land directly adjacent to the proposed Kwagga WEFs 1-3. ABO Wind has signed a servitude agreement and relevant powers of attorney with the landowner of the relevant Beaufort West and Trakas WEFs affected land portions and obtained agreement with Mainstream to facilitate the connection of the proposed Kwagga WEFs 1-3 via 132 kV overhead powerlines, via the aforementioned Eskom Switching Substation and the Beaufort West 132 kV-400 kV Linking Station, to the existing Droërivier-Proteus 400 kV overhead powerline that runs parallel to the N12 in a north-south direction.

The proposed EGI projects will comprise of the following:

#### Overhead Transmission Powerlines

- Line capacity: Up to 132 kV
- Line/pylon height: Up to 30 m
- Pylon type: Monopole
- The registered servitude for each of the seven proposed 132 kV overhead transmission powerlines will be up to 50 m wide, or where multiple adjacent powerlines occur. Note that the entire servitude will not be cleared of vegetation. Vegetation clearance within the servitude will be undertaken in compliance with relevant standards and specifications as per the Eskom Distribution Guide Part 19: Building Line Restrictions, Servitude Widths, Line Separations and Clearances from Power Lines (2011):
  - ✓ Voltage – 132 kV
  - ✓ Building restriction on each side of centre line – 18 metres (15.5 - 20)
  - ✓ Separation distance between parallel lines – 15 metres (21 - 24)

#### Associated Electrical Infrastructure

This will include but is not limited to feeder bays, busbars, new transformer bays (up to 500 MVA) and possible extension to the existing footprint at the proposed Eskom 132 kV Switching Substation. The following substations are relevant to these BA projects:

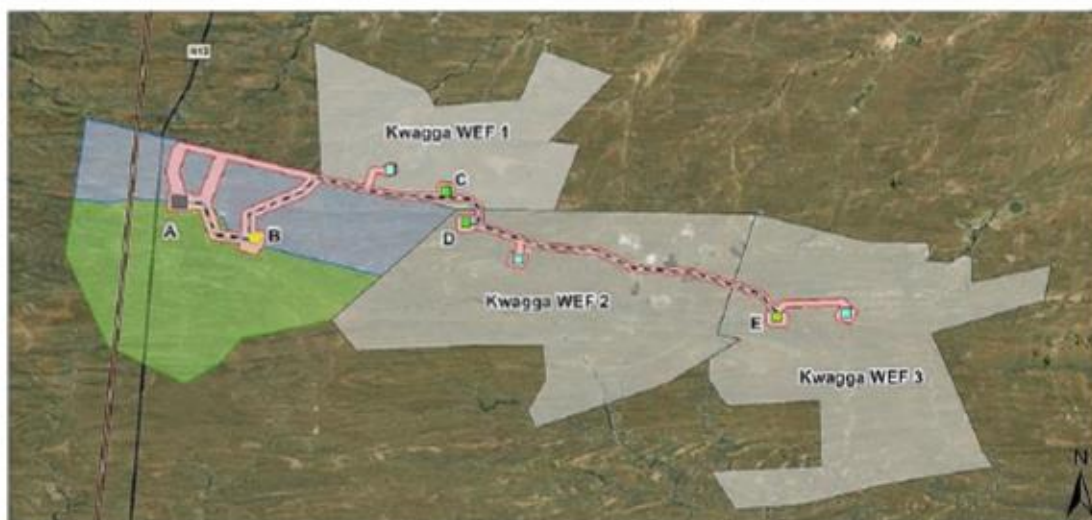
- Proposed Eskom 132 kV Switching Station (Footprint: approximately 17 ha)
- Proposed Beaufort West 132 kV- 400 kV Linking Station (Footprint: approximately 35 ha)
- Proposed Kwagga WEF 1
  - Preferred substation (Footprint: approximately 5.21 ha)
  - Alternative substation (Footprint: approximately 7.59 ha)
- Proposed Kwagga WEF 2
  - Preferred substation (Footprint: approximately 18.5 ha)
  - Alternative substation (Footprint: approximately 11.7 ha)
- Proposed Kwagga WEF 3
  - Preferred substation (Footprint: approximately 17 ha)
  - Alternative substation (Footprint: approximately 17.7 ha)

The powerlines will be constructed on a single set of pylons and will thus appear visually as a single long powerline with multiple cables on it. However, for project-specific requirements, the line needs to be broken into seven sections, each of which must be authorised separately. These are as follows:

C to B	From Kwagga WEF 1 to the proposed Eskom 132 kV Substation (SS) - 9 km
D to B via C	From Kwagga WEF 2 to the proposed Eskom 132 kV SS - 12 km
E to B via C and D	From Kwagga WEF 3 to the proposed Eskom 132 kV SS - 25 km



D to C	From Kwagga WEF 2 to Kwagga WEF 1 - 3 km
E to C via D	From Kwagga WEF 3 to Kwagga WEF 1 - 16 km
E to D	From Kwagga WEF 3 to Kwagga WEF 2 - 13 km
B to A	From the proposed Eskom 132 kV SS to the proposed Beaufort West 132 kV-400 kV Linking Station - 3 km



The construction period is expected to be 12 to 18 months.

These EGI projects do not fall within a Renewable Energy Development Zone (REDZ) or a Strategic Transmission Powerline Corridor.

Estimated value cost of the project in South African Rands: R \_\_\_\_\_

#### D. ANTICIPATED IMPACTS ON HERITAGE RESOURCES

Section 3 of the National Heritage Resources Act sets out the following categories of heritage resource as forming part of the national estate. Please indicate the known presence of any of these by checking the box alongside and then providing a description of each occurrence, including nature, location, size, type

Failure to provide sufficient detail or to anticipate the likely presence of heritage resources on the site may lead to a request for more detailed specialist information.

Provide a short history of the site and its environs (Include sources where available):

The site is in the southern Karoo region and has long been used for agriculture (largely small stock grazing). Historical occupation has left surprisingly few stone and mud-brick structures and ruins, but some vernacular farm buildings do occur. The farms were largely surveyed and granted in the late 19<sup>th</sup> century. Prior to this, precolonial people would have made use of the Karoo landscape, but

Heritage Western Cape Section 38 Application Form \_ February 2021



<p>previous surveys on these properties have shown that the vast majority of finds appear to be relatively recent, likely dating to the later part of the Holocene.</p>	
<p>Please indicate which heritage resources exist on the site and in its environs, describe them and indicate the nature of any impact upon them:</p>	
X	<p><b>Places, buildings, structures and equipment of cultural significance</b></p> <p>Description of resource: Historical buildings do occur sporadically on the landscape, but none are known, or visible on aerial photography, within the project corridors. All known structures are clustered within farm complexes that have been avoided by the proposed corridors.</p> <p>Description of impact on heritage resource: No impacts expected.</p>
<input type="checkbox"/>	<p><b>Places to which oral traditions are attached or which are associated with living heritage</b></p> <p>Description of resource: n/a</p> <p>Description of impact on heritage resource: n/a</p>
<input type="checkbox"/>	<p><b>Historical settlements and townscape</b></p> <p>Description of resource: n/a</p> <p>Description of impact on heritage resource: n/a</p>
X	<p><b>Landscapes and natural features of cultural significance</b></p> <p>Description of resource: The broader Karoo landscape has aesthetic significance but, although located just southeast of a REDZ and a Strategic Transmission Powerline Corridor, several wind farms have been approved in the area. Two of these – at the western end of the study area adjacent to the N12 – are scheduled to commence construction imminently.</p> <p>Description of impact on heritage resource: Although the powerline would increase the amount of visual clutter in the landscape, this would be seen against at least three wind farms, since two are about to be built while the project would not proceed unless one of the three Kwagga wind farms (already approved by HWC) was also approved for construction. As such, the landscape impacts are considered to be minimal.</p>
<input type="checkbox"/>	<p><b>Geological resources of scientific or cultural importance</b></p> <p>Description of resource: n/a</p> <p>Description of impact on heritage resource: n/a</p>
X	<p><b>Archaeological resources (including archaeological sites and material, rock art, battlefields &amp; wrecks):</b></p> <p>Description of resource: Surveys for the three Kwagga wind farms as well as those for the Beaufort West and Trakas wind farms about to be constructed showed that some significant archaeological sites occurred along riverbanks. These were Later Stone Age (LSA) scatters where people were living during the late Holocene. Elsewhere, Stone Age archaeological sites were largely associated with heuweltjies and consisted of ephemeral to light scatters of stone artefacts and occasional ostrich eggshell fragments. The vast majority of these were far too low density to be academically meaningful. Curiously, the density of these heuweltjie sites dropped off dramatically towards the southwestern part of the broader study area. Six such sites have</p>

Heritage Western Cape Section 38 Application Form \_ February 2021

	<p>been mapped within the proposed corridors, but all of them were graded NCW during the wind farm assessments. One ESA scatter is known from the eastern part of the study area. It lies atop a ridge far away from the study area.</p> <p>Description of impact on heritage resource: Impacts to low significance archaeological resources are expected where the powerline impacts heuweltjies. However, based on existing data, no highly significant sites are expected on the heuweltjies. A pre-construction survey of the final alignment within the corridor will be able to identify any sites that need further attention.</p>
X	<p><b>Palaeontological resources (ie: fossils):</b></p> <p>Description of resource: The Karoo Basin sediments are well-known for their fossil content and the SAHRIS Palaeosensitivity map shows the entire study area being provisionally of Very High sensitivity (Lower Beaufort Group bedrocks) but that extensive field experience shows that fossil sites of scientific and conservation importance in region tend to be rare and can only be picked up by field surveying but can almost invariably be mitigated in the pre-construction phase, if necessary. Best approach is therefore to conduct a pre-construction survey of selected, potentially sensitive sectors of corridor once this has been selected based on other constraints.</p> <p>Description of impact on heritage resource: There is a strong likelihood that fossil resources could be affected by the proposed development.</p>
X	<p><b>Graves and burial grounds (eg: ancestral graves, graves of victims of conflict, historical graves &amp; cemeteries):</b></p> <p>Description of Resource: Some graves are known from the broader study area, but they are generally located close to farmsteads. However, some were located away from houses with the nearest to the proposed EGI project corridors being 1 km distant.</p> <p>Description of Impact on Heritage Resource: It is possible that isolated graves could occur within the corridors but because the EGI project corridors avoid farmsteads, the chances are fairly low.</p>
X	<p><b>Other human remains:</b></p> <p>Description of resource: Unmarked human burials could be present, although in this generally rocky environment burials are normally placed along riverbanks which means the chances of such graves being intersected are extremely low.</p> <p>Description of impact on heritage resource: No impacts are expected.</p>
<input type="checkbox"/>	<p><b>Sites of significance relating to the history of slavery in South Africa:</b></p> <p>Description of resource: n/a</p> <p>Description of impact on heritage resource: n/a</p>
<input type="checkbox"/>	<p><b>Other heritage resources:</b></p> <p>Description of resource: n/a</p> <p>Description of impact on heritage resource: n/a</p>

Describe elements in the environs of the site that could be deemed to be heritage resources:  
Description of impacts on heritage resources in the environs of the site:

As above

**Summary of anticipated impacts on heritage resources:**

The primary concerns for this EGI project are impacts to archaeology and palaeontology. Because plenty of survey has been carried out in the area already there is a very good understanding of the area's heritage. A corridor approach is being taken which means that a pre-construction survey will be able to identify any specific points that should be avoided or mitigated prior to construction. For this reason, a desktop archaeological study is proposed as part of the HIA.

Although fossils are seldom seen at the surface, a palaeontological study will also be needed due to the high likelihood of fossils being found during development. Once more, a desktop study is appropriate based on the wealth of existing information and will recommend that a pre-construction survey of any potentially sensitive areas be undertaken once an alignment has been generated during the pre-construction phase.

The landscape is of very limited concern because several wind farms have already been approved in this area with two about to be constructed. Also, the project will not proceed if one or more of the Kwagga wind farm projects do not go ahead. As such, no further detailed studies of the landscape or visual impacts are considered necessary.

**E. ILLUSTRATIVE MATERIAL:**

Attach to this form a minimum A4 sized locality plan showing the boundaries of the area affected by the proposed development, its environs, property boundaries and a scale. The plan must be of a scale and size that is appropriate to creating a clear understanding of the development.

Attach also other relevant graphic material such as maps, site plans, satellite photographs and photographs of the site and the heritage resources on it and in its environs. These are essential to the processing of this notification.

Please provide all graphic material on paper of appropriate size and on CD/ USB in JPEG format. It is essential that graphic material be annotated via titles on the photographs, map names and numbers, names of files and/or provision of a numbered list describing what is visible in each image.

**F. RECOMMENDATION**

In your opinion do you believe that a heritage impact assessment is required?  Yes  No

Recommendation made by:

Name: Dr Jayson Orton

Capacity: Archaeologist and heritage consultant

**PLEASE NOTE:** No Heritage Impact Assessment should be submitted with this form or conducted until Heritage Western Cape has expressed its opinion on the need for such and the nature thereof.

**G. INFORMATION TO BE PROVIDED AND STUDIES TO BE CONDUCTED AS PART OF THE HERITAGE IMPACT ASSESSMENT (HIA)**

If it is recommended that an HIA is required, please complete this section of the form.

**DETAILS OF STUDIES TO BE CONDUCTED IN THE INTENDED HIA**

In addition to the requirements set out in Section 38(3) of the NHRA, indicate envisaged studies:

<input type="checkbox"/>	Heritage resource-related guidelines and policies.
<input type="checkbox"/>	Local authority planning and other laws and policies.
<input type="checkbox"/>	Details of parties, communities, etc. to be consulted.
<input checked="" type="checkbox"/>	Specialist studies, eg: archaeology, palaeontology, architecture, townscape, visual impact, etc. Provide details: archaeology desktop, palaeontology desktop
<input type="checkbox"/>	Other. Provide details:

**PLEASE NOTE:** Any further studies which Heritage Western Cape requires should be submitted must be in the form of a single, consolidated report with a single set of recommendations. Specialist studies must be incorporated in full, either as chapters of the report, or as annexures thereto. Please refer to the *Guidelines for Heritage Impact Assessments required in terms of Section 38 of the National Heritage Resources Act (Act 25 of 1999)*



DRAFT BASIC ASSESSMENT REPORT: Basic Assessment for the proposed construction of a 132 kV Overhead Powerline between the proposed Kwagga Wind Energy Facility 1 and the proposed Kwagga Wind Energy Facility 3, near Beaufort West in the Western Cape Province

---

---

**From:** jayson@asha-consulting.co.za <jayson@asha-consulting.co.za>  
**Sent:** Wednesday, 18 May 2022 22:27  
**To:** Ceoheritage <Ceoheritage@westerncape.gov.za>  
**Cc:** Lizande Kellerman <LKellerman@csir.co.za>  
**Subject:** EMAIL 1 - NEW APPLICATION: NID, various farms, Beaufort West and Prince Albert

Hi

Please find attached a NID application for seven powerlines across various farms. It is 7 projects but all being built together and all assessed in a single NID.

There are 8 attachments here and I will send a further 4 in a second email.

thanks  
Jayson

Dr Jayson Orton  
[www.asha-consulting.co.za](http://www.asha-consulting.co.za)  
23 Dover Road, Muizenberg, 7945  
021 788 1025 | 083 272 3225

## E. 6: ACKNOWLEDGEMENT OF RECEIPT OF THE NOTIFICATION OF INTENT TO DEVELOP (NID) FROM HERITAGE WESTERN CAPE (HWC)

---

From: Ceoheritage <Ceoheritage@westerncape.gov.za>  
Sent: Saturday, 21 May 2022 16:35  
To: jayson@asha-consulting.co.za  
Cc: Lizande Kellerman <LKellerman@csir.co.za>  
Subject: Re: EMAIL 2 - NEW APPLICATION: NID, various farms, Beaufort West and Prince Albert

You don't often get email from [ceoheritage@westerncape.gov.za](mailto:ceoheritage@westerncape.gov.za). [Learn why this is important](#)

Dear Applicant

Apologies for the delay in acknowledgement of receipt.

I acknowledge receipt of your Sec 38 NID application submitted for various farms, Beaufort West and Prince Albert received on 19 May 2022

**Please note, the above is an initial assessment as per the application guideline of documentation required. Once your application is assigned, the relevant Case Officer will confirm assignment of application and if there are any further requirements**

Ameerah Peters  
Personal Assistant to  
Chief Executive Officer  
Heritage Western Cape  
Western Cape Government

3<sup>rd</sup> Floor, Protea Assurance Building Greenmarket Square, Cape Town

Tel: 021 483 9598

Cell: 074 997 6627

Email: [Ameerah.Peters@westerncape.gov.za](mailto:Ameerah.Peters@westerncape.gov.za)

DRAFT BASIC ASSESSMENT REPORT: Basic Assessment for the proposed construction of a 132 kV Overhead Powerline between the proposed Kwagga Wind Energy Facility 1 and the proposed Kwagga Wind Energy Facility 3, near Beaufort West in the Western Cape Province

---

---

From: Stephanie Barnardt <[Stephanie.Barnardt@westerncape.gov.za](mailto:Stephanie.Barnardt@westerncape.gov.za)>  
Sent: Tuesday, 14 June 2022 15:36  
To: Rob Invernizzi <[Rob.Invernizzi@abo-wind.com](mailto:Rob.Invernizzi@abo-wind.com)>  
Subject: HM / CENTRAL KAROO/ BEAUFORT WEST / KWAGGA – VARIOUS FARMS  
Importance: High

Good day Applicant

Thank you for your submission to HWC regards to the above application.

Please see attached response for your records.

Any further questions, please reply to this email.

Kind regards,

Stephanie-Anne Barnardt-Delport  
Heritage Officer (Archaeologist)  
Heritage Western Cape

1

DRAFT BASIC ASSESSMENT REPORT: Basic Assessment for the proposed construction of a 132 kV Overhead Powerline between the proposed Kwagga Wind Energy Facility 1 and the proposed Kwagga Wind Energy Facility 3, near Beaufort West in the Western Cape Province

PAGE 1 OF 2

Our Ref: HM / CENTRAL KAROO/ BEAUFORT WEST / KWAGGA – VARIOUS FARMS  
Case No.: 20220518S80519E  
Enquiries: Stephanie Barnardt  
E-mail: Stephanie.Barnardt@westerncape.gov.za  
Tel: 021 483 5959



Robert Invernizzi  
[Rob.Invernizzi@abo-wind.com](mailto:Rob.Invernizzi@abo-wind.com)

**RESPONSE TO NOTIFICATION OF INTENT TO DEVELOP: HIA REQUIRED**  
In terms of Section 38(8) of the National Heritage Resources Act (Act 25 of 1999) and the Western Cape Provincial Gazette 6061, Notice 298 of 2003

**NOTIFICATION OF INTENT TO DEVELOP: PROPOSED CONSTRUCTION OF SEVEN 132 KV OVERHEAD TRANSMISSION POWERLINES IN SUPPORT OF THE PROPOSED KWAGGA WIND ENERGY FACILITY SUBMITTED IN TERMS OF SECTION 38(1) OF THE NATIONAL HERITAGE RESOURCES ACT (ACT 25 OF 1999)**

**ERF Numbers:** Portion 1 of Trakas Kuilen 15, Remainder of Trakas Kuilen 15, Portion 1 of Wit Poortje 16, Portion 1 of Dwaalfontein Wes 377, Remainder of Dwaalfontein Wes 377, Dwaalfontein 379, Remainder of Wolve Kraal 17, Portion 9 of Wolve Kraal 17, Portion 7 of Farm 373

The matter above has reference.

Heritage Western Cape is in receipt of your application for the above matter received. This matter was discussed at the Heritage Officers Meeting held on 17 May 2022.

You are hereby notified that, since there is reason to believe that the proposed construction of seven 132 kV overhead transmission powerlines in support of the proposed Kwagga Wind Energy Facility will impact on heritage resources, HWC requires that a Heritage Impact Assessment (HIA) that satisfies the provisions of Section 38(3) of the NHRA be submitted. Section 38(3) of the NHRA provides

- (3) The responsible heritage resources authority must specify the information to be provided in a report required in terms of subsection (2)(a): **Provided that the following must be included:**
- (a) The identification and mapping of all heritage resources in the area affected;
  - (b) an assessment of the significance of such resources in terms of the heritage assessment criteria set out in section 6(2) or prescribed under section 7;
  - (c) an assessment of the impact of the development on such heritage resources;
  - (d) an evaluation of the impact of the development on heritage resources relative to the sustainable social and economic benefits to be derived from the development;
  - (e) the results of consultation with communities affected by the proposed development and other interested parties regarding the impact of the development on heritage resources;
  - (f) if heritage resources will be adversely affected by the proposed development, The consideration of alternatives; and
  - (g) plans for mitigation of any adverse effects during and after the completion of the proposed development.

(Our emphasis)

This HIA must in addition have specific reference to the following:

- Desktop Archaeological Impact Assessment
- Palaeontological Impact Assessment

The HIA must have an overall assessment of the impacts to heritage resources which are not limited to the specific studies referenced above.

The required HIA must have an integrated set of recommendations.

The comments of relevant registered conservation bodies; all Interested and Affected parties; and the relevant Municipality must be requested and included in the HIA where provided. Proof of these requests must be supplied.

[www.westerncape.gov.za/cas](http://www.westerncape.gov.za/cas)

Street Address: Protea Assurance Building, Green Market Square, Cape Town, 8000 • Postal Address: P.O. Box 1665, Cape Town, 8000  
• Tel: +27 (0)21 483 5959 • E-mail: [ceoheritage@westerncape.gov.za](mailto:ceoheritage@westerncape.gov.za)

Straatadres: Protea Assuransie-gebou, Groentemarkplein, Kaapstad, 8000 • Posadres: Posbus 1665, Kaapstad, 8000  
• Tel: +27 (0)21 483 5959 • E-pos: [ceoheritage@westerncape.gov.za](mailto:ceoheritage@westerncape.gov.za)

Idilesi yendawo: kungangatho 3, kwisakhiwo iprotea Assurance, Greenmarket Square, eKapa, 8000 • Idilesi yeposi: Inombolo yebhokisi yeposi 1665, eKapa, 8000 • Iinombolo zomnxeba: +27 (0)21 483 5959 • Idilesi ye-imeyili: [ceoheritage@westerncape.gov.za](mailto:ceoheritage@westerncape.gov.za)



DRAFT BASIC ASSESSMENT REPORT: Basic Assessment for the proposed construction of a 132 kV Overhead Powerline between the proposed Kwagga Wind Energy Facility 1 and the proposed Kwagga Wind Energy Facility 3, near Beaufort West in the Western Cape Province

---

PAGE 2 OF 2

**Our Ref:** HM / CENTRAL KAROO/ BEAUFORT WEST / VARIOUS\* listed below  
**Case No.:** 20220518S80519E  
**Enquiries:** Stephanie Barnardt  
**E-mail:** Stephanie.Barnardt@westerncape.gov.za  
**Tel:** 021 483 5959



If applicable, applicants are strongly advised to review and adhere to the time limits contained the Standard Operational Procedure (SOP) between DEADP and HWC. The SOP can be found using the following link <http://www.hwc.org.za/node/293>

Kindly take note of the HWC meeting dates and associated agenda closure date in order to ensure that comments are provided within as Reasonable time and that these times are factored into the project timeframes.

HWC reserves the right to request additional information as required.

Should you have any further queries, please contact the official above and quote the case number.

.....  
Colette Scheermeyer  
Deputy Director



[www.westerncape.gov.za/cas](http://www.westerncape.gov.za/cas)

**Street Address:** Protea Assurance Building, Green Market Square, Cape Town, 8000 • **Postal Address:** P.O. Box 1665, Cape Town, 8000  
• **Tel:** +27 (0)21 483 5959 • **E-mail:** ceoheritage@westerncape.gov.za

**Straatadres:** Protea Assuransie-gebou, Groentemarkplein, Kaapstad, 8000 • **Posadres:** Posbus 1665, Kaapstad, 8000  
• **Tel:** +27 (0)21 483 5959 • **E-pos:** ceoheritage@westerncape.gov.za

**Idilesi yendawo:** kumgangatho 3, kwisakhiwo iprotea Assurance, Greenmarket Square, eKapa, 8000 • **Idilesi yeposi:** Inombolo yebhokisi yeposi 1665, eKapa, 8000 • **Iinombolo zomnxeba:** +27 (0)21 483 5959 • **Idilesi ye-imeyile:** ceoheritage@westerncape.gov.za

APPENDIX E – Public Participation