

Strategic Environmental Assessment

for the Boegoebaai Port, Special economic Zone and Namakwa Region



WORKING GROUP MEETING #2



TRANSNET



10 October 2024
10:00 – 12:00
Microsoft Teams





Agenda

No.	Item/Status	Timeslot	Presenter
1	Welcome and opening	10:00-10:10	Abulele Adams - Executive Director of International Association of Impact Assessment (IAIA) Board
2	Brief overview of proposed developments and infrastructure	10:10-10:20	Luanita Snyman van der Walt - SEA Geo-spatial expert Council for Scientific and Industrial Research (CSIR)
	Questions/Discussion	10:20-10:30	All
3	Overview of the selection process for Boegoebaai as the preferred site	10:30-10:40	Thulisa Zukulu - Programme Manager: Ports Transnet Ports Authority (TNPA)
	Questions/Discussion	10:40-10:50	All
4	Scope and Methodology for the Specialist Studies	10:50-11:15	Greg Schreiner - SEA Advisor CSIR
	Questions/Discussion	11:15-11:30	All
5	SEA status update	11:30-11:40	Babalwa Mqokeli - SEA Project Manager CSIR
	Questions/Discussion	11:40-11:50	
7	Closure and next steps	11:50-12:00	Paul Lochner - SEA Project Leader CSIR

Welcome and Opening

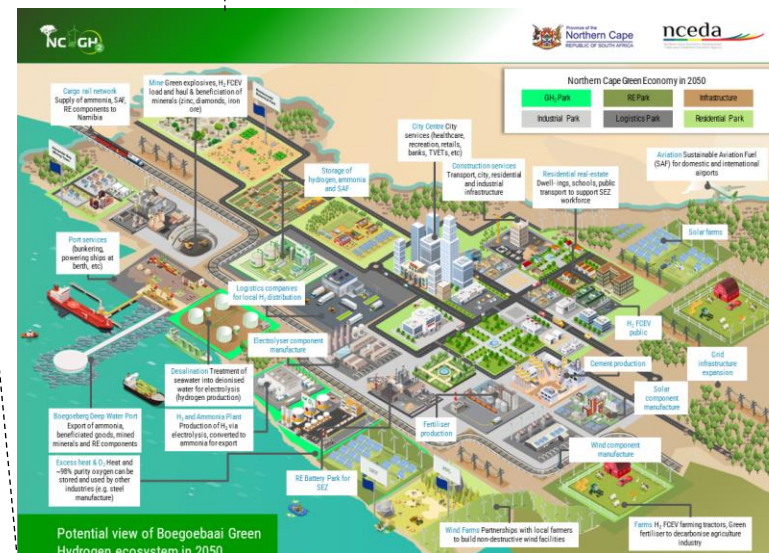
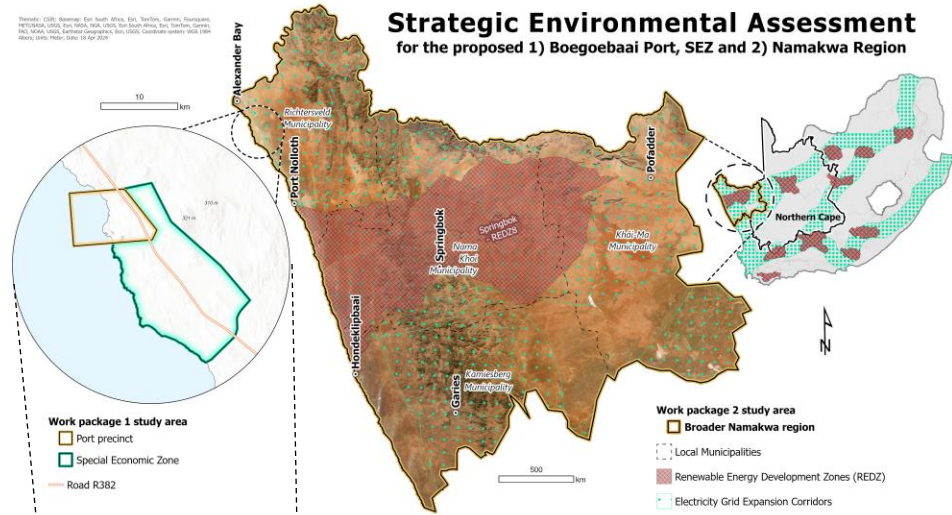
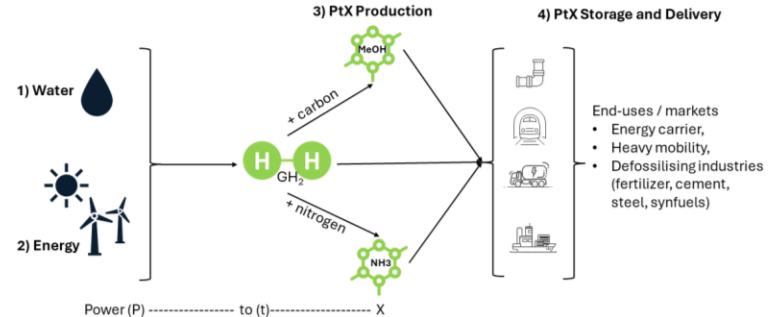
- **Purpose of 2nd Meeting :**
 - Provide an overview of the proposed developments of the project.
 - Present the status of the SEA
 - Outline the scope and methodology for the specialist studies
 - To be applied across the two Work packages (WPs)



Figure 1

Overview of Proposed Developments & Infrastructure

- South Africa aims to reduce fossil fuel reliance, incl. hard-to-abate sectors.
- Green hydrogen (GH_2) seen as a pathway to decarbonize our economies.
- Northern Cape GH_2 opportunity:
 - Renewable energy (RE) resource,
 - Land availability, and
 - Strategic location – export markets, Namibia, Western Cape, hinterland.
- Key catalytic infrastructure proposed to realise GH_2 potential.
 - Boegoebaai port precinct,
 - Adjacent Special Economic Zone (SEZ),
 - Regional RE generation & transmission (TX) networks, and transport infrastructure.



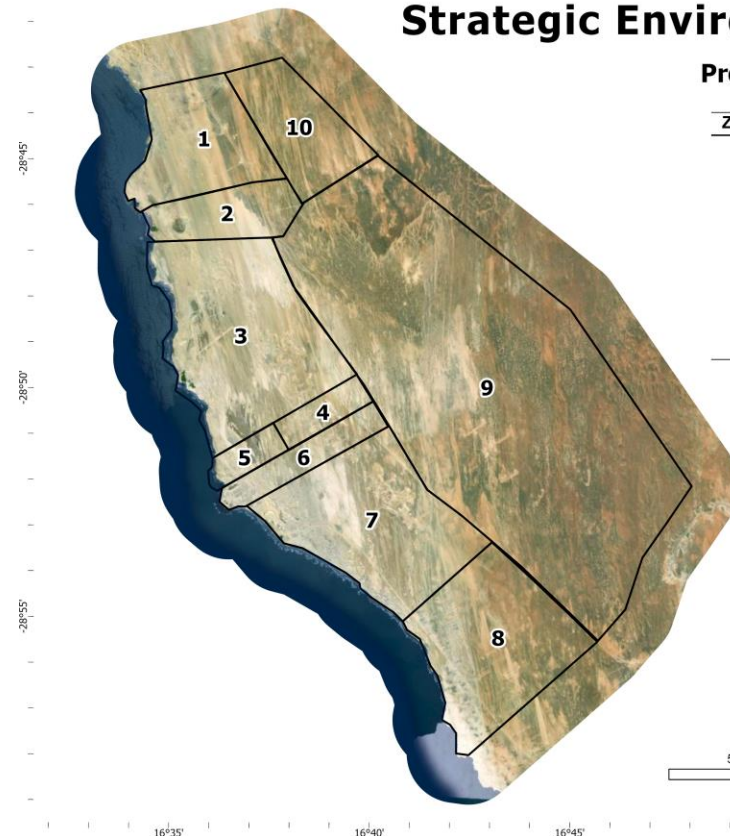
Project aspects and SEA Work Packages

- Work Package 1:
 - Port precinct (3 378 ha).
 - Focus on short-term (Phase 1A. development plan.
 - Long-term (Phase 1B) development plan broadly conceptualised
 - SEZ (30 122 ha)
 - Focus on short term and future development zones.



Strategic Environmental Assessment

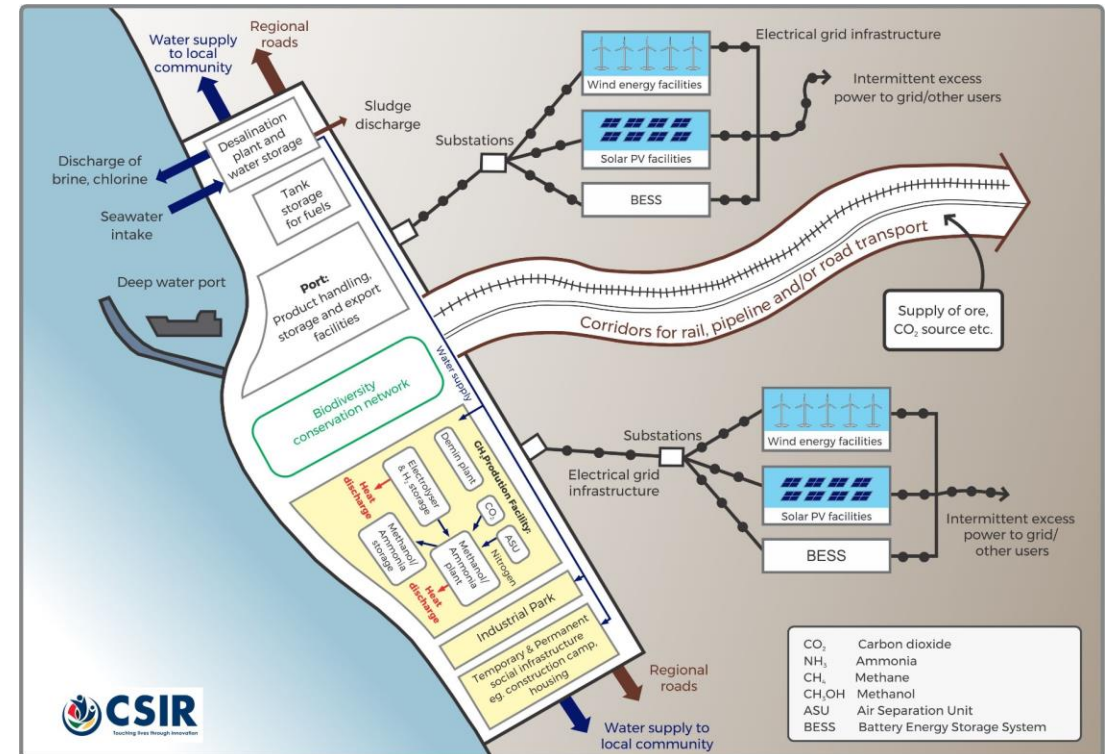
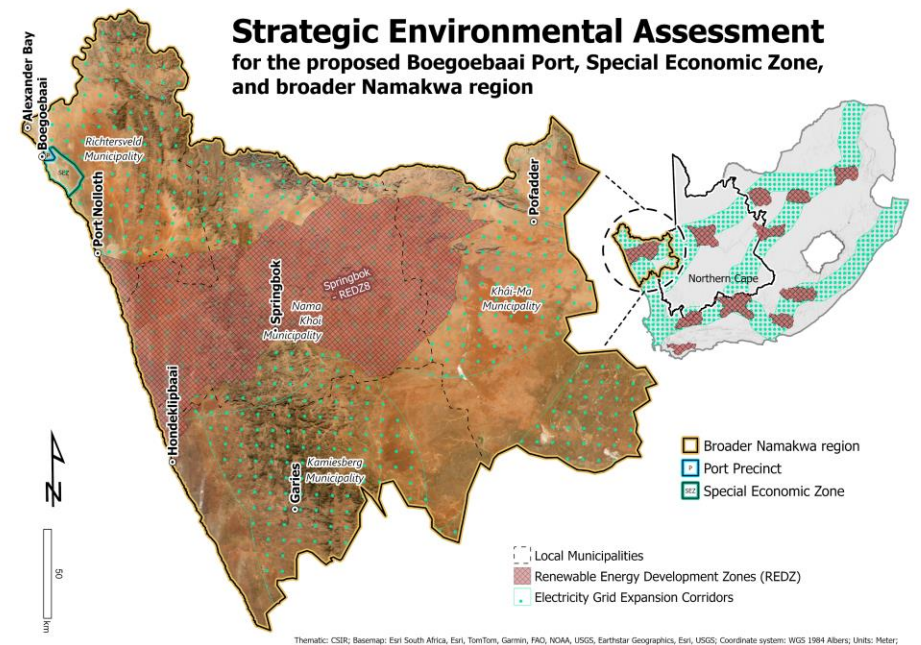
Proposed Special Economic Zone layout



Zone	Use	Approximate area
1	Boegoebaai port	2 187 ha
2	Conservancy area	1 170 ha
3	Confirmed green ammonia facility	4 508 ha
4	SEZ Phase 1	499 ha
5	SEZ Phase 2	411 ha
6	SEZ Phase 3	833 ha
7	Future green hydrogen facility	3 713 ha
8	Future expansion 01	3 408 ha
9	Future expansion 02	15 067 ha
10	Future tank farm	1 704 ha
		33 500 ha

Project aspects and SEA Work Packages

- Work Package 2:
 - Scope delimited by 4 local municipalities (incl. the 33 500 ha Port & SEZ extent).
 - Focus is on impacts associated with regional GH2 economy in NC
 - Long term port layout (Phase 1B)
 - Future SEZ activities (expansion)
 - RE & TX lines
 - Transport infrastructure (pipelines, new rail, roads upgrade/expansion etc.)



SEA Status Update

– Updates on Specialists' assessments:

- Specialists' appointment process finalised
- Fieldwork undertaken for WP1: terrestrial ecology, heritage, fisheries & coastal livelihoods, marine ecology
- Fieldwork still to be undertaken: Aquatic ecology, Bats

– SEA Updates:

- Plenary session held with PSC and Specialists on 30 Sept 2024
- Specialist commencing with baseline/environmental description & sensitivity analysis/mapping
- Site visit by CSIR SEA team, TNPA & NCEDA in mid-October 2024



Closure and Next Steps

– Expectations over the next 7 months:

- Separate follow-up specialists' plenaries for WP1 and WP2 ~ mid and late October, respectively
 - to allow for deeper engagement on the distinct issues and methodologies of each theme
- 3rd Specialists' plenary session ~ end November 2024
 - Preliminary results discussion and other aspects/concerns/issues
- Submission of Specialist reports as per the relevant contracts:
 - WP1 draft reports due end Nov/Dec 2024/Jan 2025
 - WP2 draft reports due end Jan/Feb 2025
 - Final report due end Feb/Mar 2025 for WP1 & end Apr 2025 for WP2
- Specialists' plenary engagements to be held at draft reports phase/s
- Lead Authors to present WP1 draft findings to WG (~Jan 2025 meeting) + one public briefing meeting



Key Action Items

- Captured during the meeting:
 - Key meeting notes and slides to be shared with all attendees
 - **Documentation and studies:** Share with the WG - upon TNPA's confirmation of confidentiality / what can be shared:
 - Environmental Screening Study;
 - Socio-economic Study.
 - WG member can comment on Specialists Plans of Study and Specialist teams
 - Consider adding a fisheries science aspect as a resource to the Fisheries & Coastal Livelihoods Chapter
 - CSIR to engage with Author team on this
 - Stephen Lamberth to liaise further with CSIR and include recommendation relevant expert to contribute this aspect
 - Dates for public briefings to be shared timeously

Thank you



Project Website: www.csir.co.za/boegoebaai-port



SEA email: ems@csir.co.za

CSIR Project Team:

- Babalwa Mqokeli: BMqokeli@csir.co.za
- Gregory Schreiner: GSchreiner@csir.co.za
 - Luanita Snyman-van der Walt: LvdWalt1@csir.co.za
 - Paul Lochner: PLochner@csir.co.za
 - Rinae Tsedu: rtsedu@csir.co.za