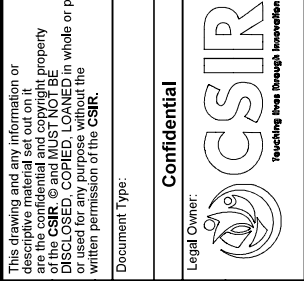


ITEM NO.	PART NUMBER	DESCRIPTION	QTY.
1	GMTJ22-020-006	TSHPB TRANSMITTER BAR	2

Material: <b>ALUMINIUM 7075-T6</b>		Description: <b>TSHPB TRANSMITTER BAR</b>	
This drawing and any information or descriptive material set out on it are the property of the CSIR. It is to be kept confidential and MUST NOT BE DISCLOSED, COPIED, LOANED in whole or part or used for any purpose without the written permission of the CSIR.			
Finish: SPECIFIED ON DRAWING		Drawn by: M.MY/MB0	
Unless Otherwise Stated: Linear Tol: $\pm 0.2$ Angular Tol: $0^{\circ}15'$ Surface Finish: $0.8\mu m$ All Dimensions: mm		Drawn Date: 08/02/2023	
Drawing Scale: 1:5		Checked/Approved by:	
Approx Weight: Kg		Checked/Approved Date:	
Drawing Produced In Accordance With: ISO 9001 & SABS 0111-1		Part Number: GMTJ22-020-002	
Projection Method: THIRD ANGLE		Revision:	
Sheet Size: <b>A3</b>		Sheet: <b>1 of 1</b>	

GEN. TOLERANCES U.O.S.	
NOM. DIMS	PERM. VAR. (t)
0.5-6	$\pm 0.15$
6-30	$\pm 0.2$
30-120	$\pm 0.5$
120-400	$\pm 1.2$
400-1000	$\pm 2$
ANGLES	$\pm 0.5^{\circ}$
HOLES: $\frac{H}{h}$	SHAFTS: $\frac{H}{h}$



**Confidential**