

ENVIRONMENTAL IMPACT ASSESSMENT

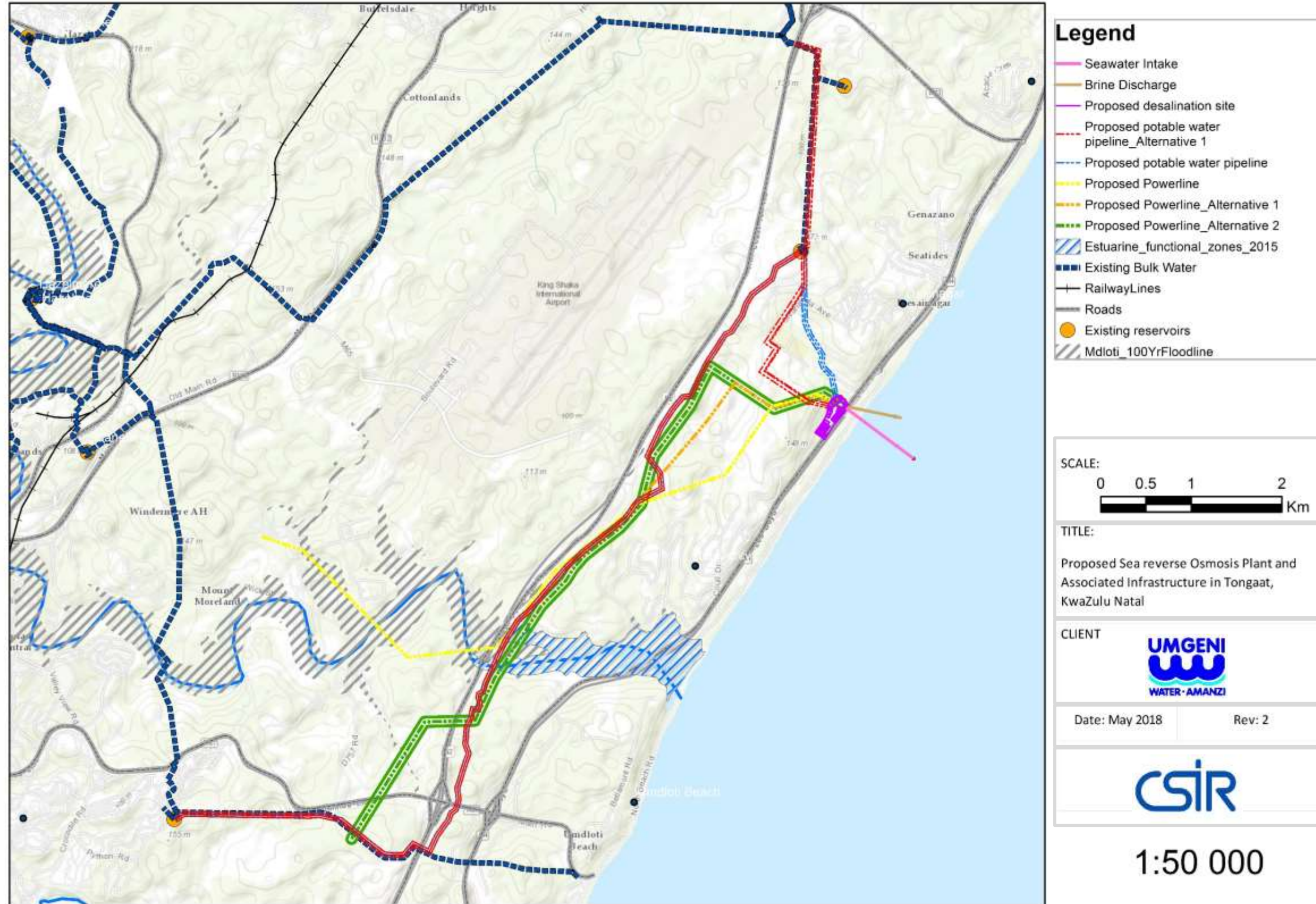
Updated Final Environmental Impact Assessment Report for the
Proposed Construction, Operation and Decommissioning of a
Seawater Reverse Osmosis Plant and Associated
Infrastructure in Tongaat, Kwazulu-Natal

UPDATED
FINAL
EIA
REPORT

APPENDIX D:
Layout Maps

APPENDIX D MAPS

Map 1:	Topographic map 1/50 000 showing the location of the proposed project	1
Map 2:	Location map for the proposed project	2
Map 3:	Landcover (SANBI)	3
Map 4:	Proposed project in relation to vegetation types and remaining Threatened ecosystems	4
Map 5:	Proposed project in relation to CBA as defined in the EKZNW Terrestrial Systematic Conservation Plan (2010)	5
Map 6:	Proposed project in relation to CBA as defined in the EKZNW Terrestrial Systematic Conservation Plan (2016)	6
Map 7:	Proposed project in relation with aquatic features	7



Map 1: Topographic map 1/50 000 showing the location of the proposed project



Legend

- Seawater Intake
- Brine Discharge
- Proposed desalination site
- Proposed potable water pipeline_Alternative 1
- Proposed potable water pipeline
- Proposed Powerline
- Proposed Powerline_Alternative 1
- Proposed Powerline_Alternative 2
- Estuarine_functional_zones_2015
- Existing Bulk Water
- RailwayLines
- Roads
- Existing reservoirs
- Mdloti_100YrFloodline

SCALE: 0 0.5 1 2 Km

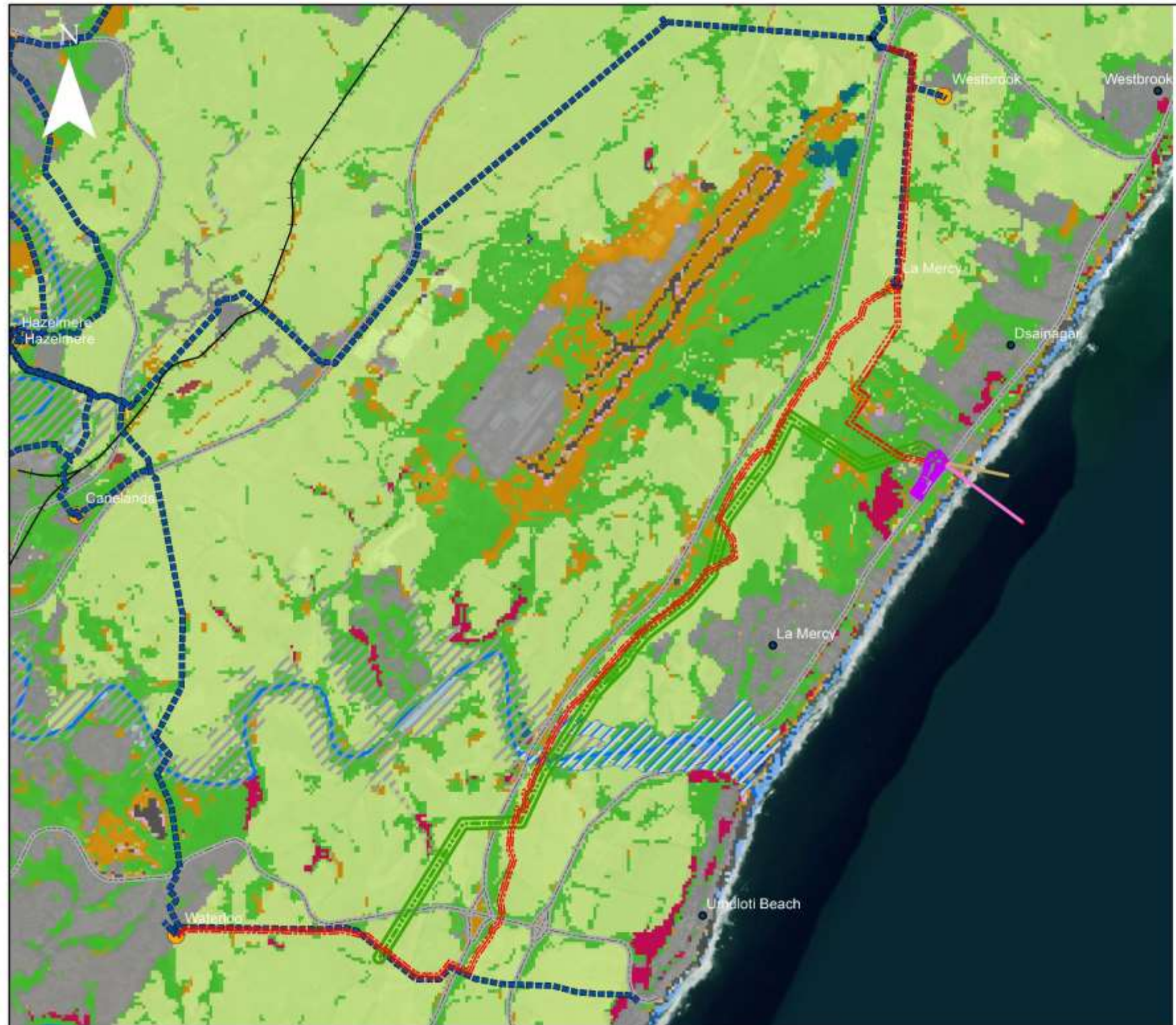
TITLE:
 Proposed Sea reverse Osmosis Plant and
 Associated Infrastructure in Tongaat,
 KwaZulu Natal

CLIENT: 

Date: May 2018 Rev: 2



Map 2: Location map for the proposed project



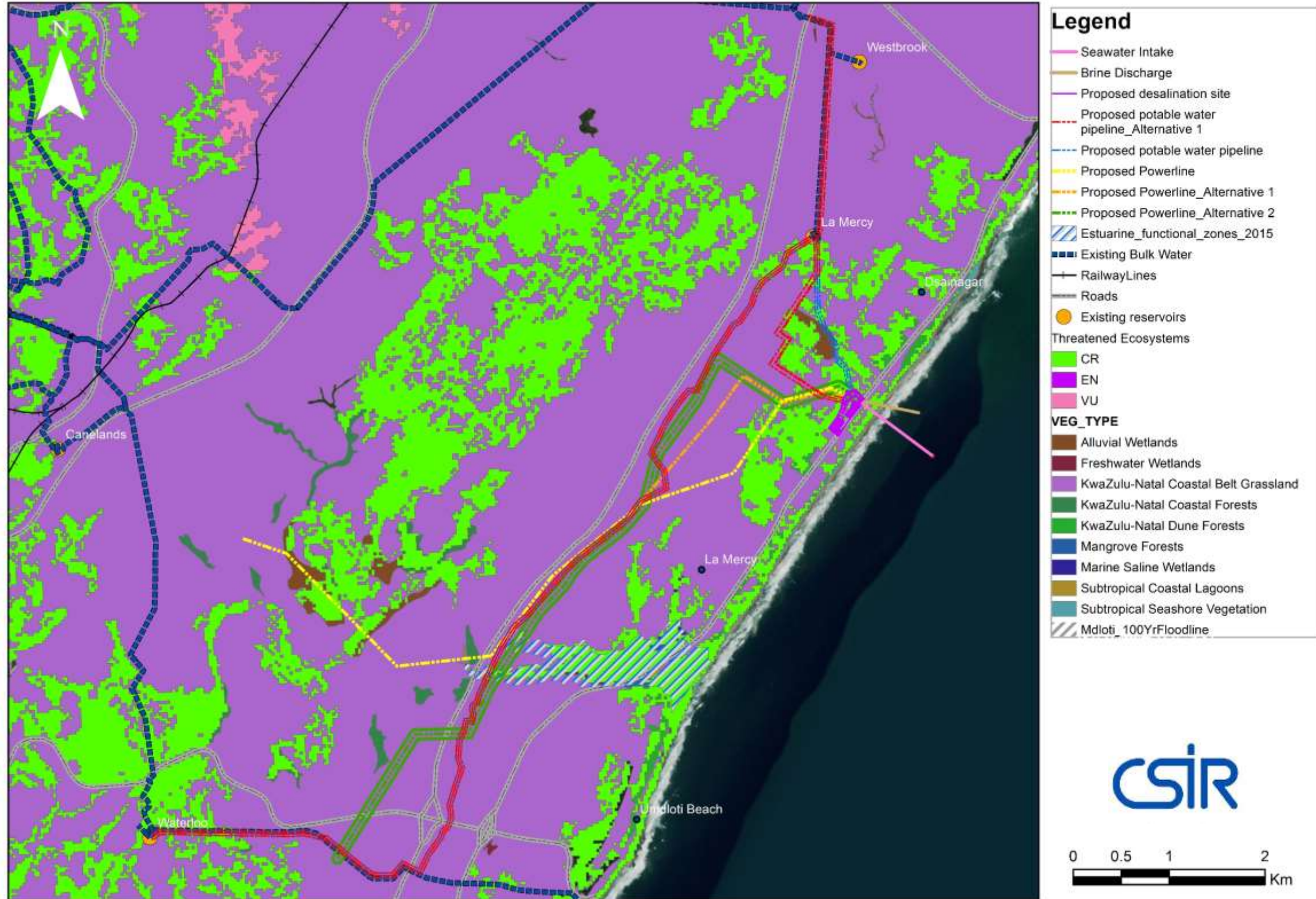
TITLE:
 Proposed Sea reverse Osmosis Plant and
 Associated Infrastructure in Tongaat,
 KwaZulu Natal



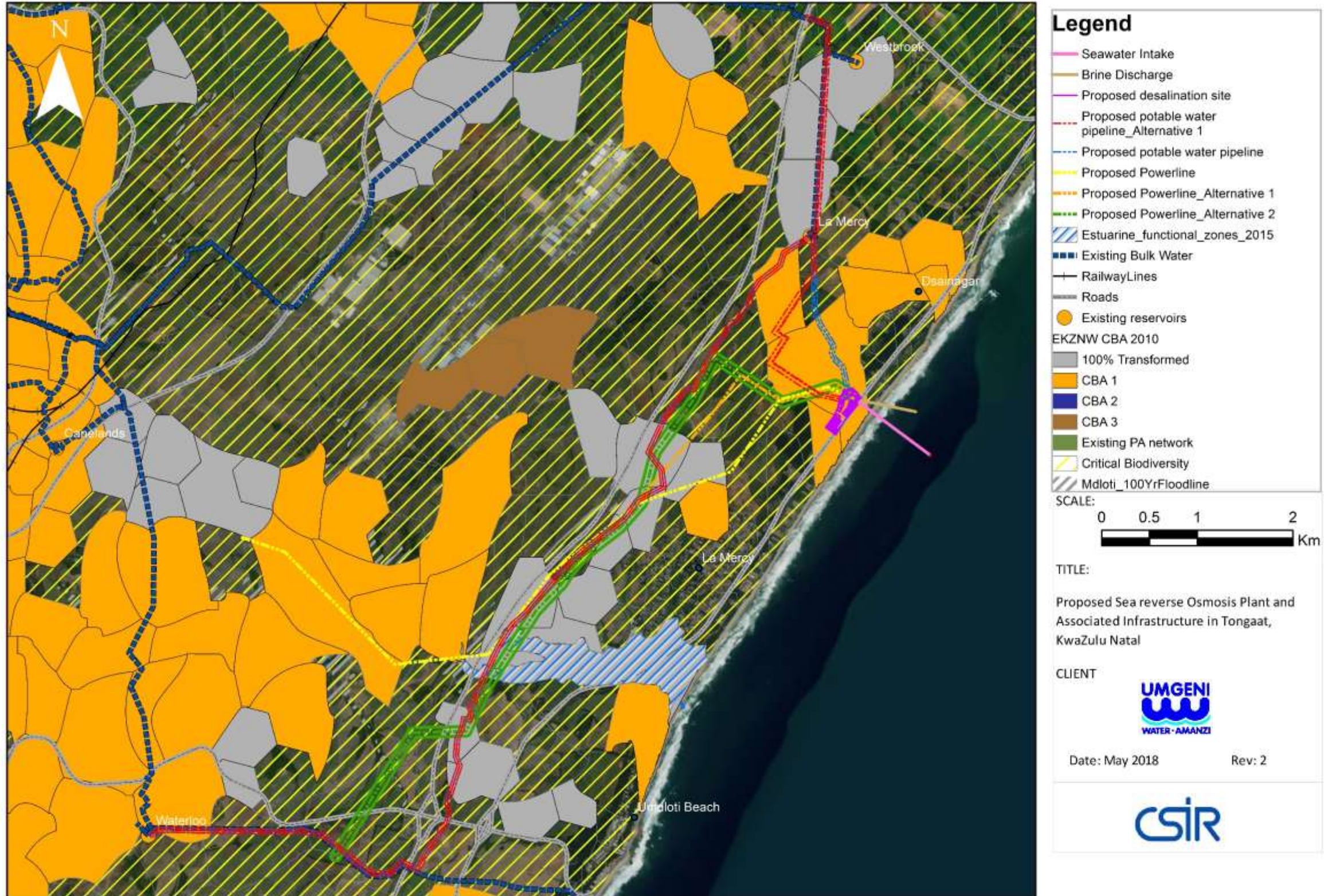
Date: May 2018 Rev: 2



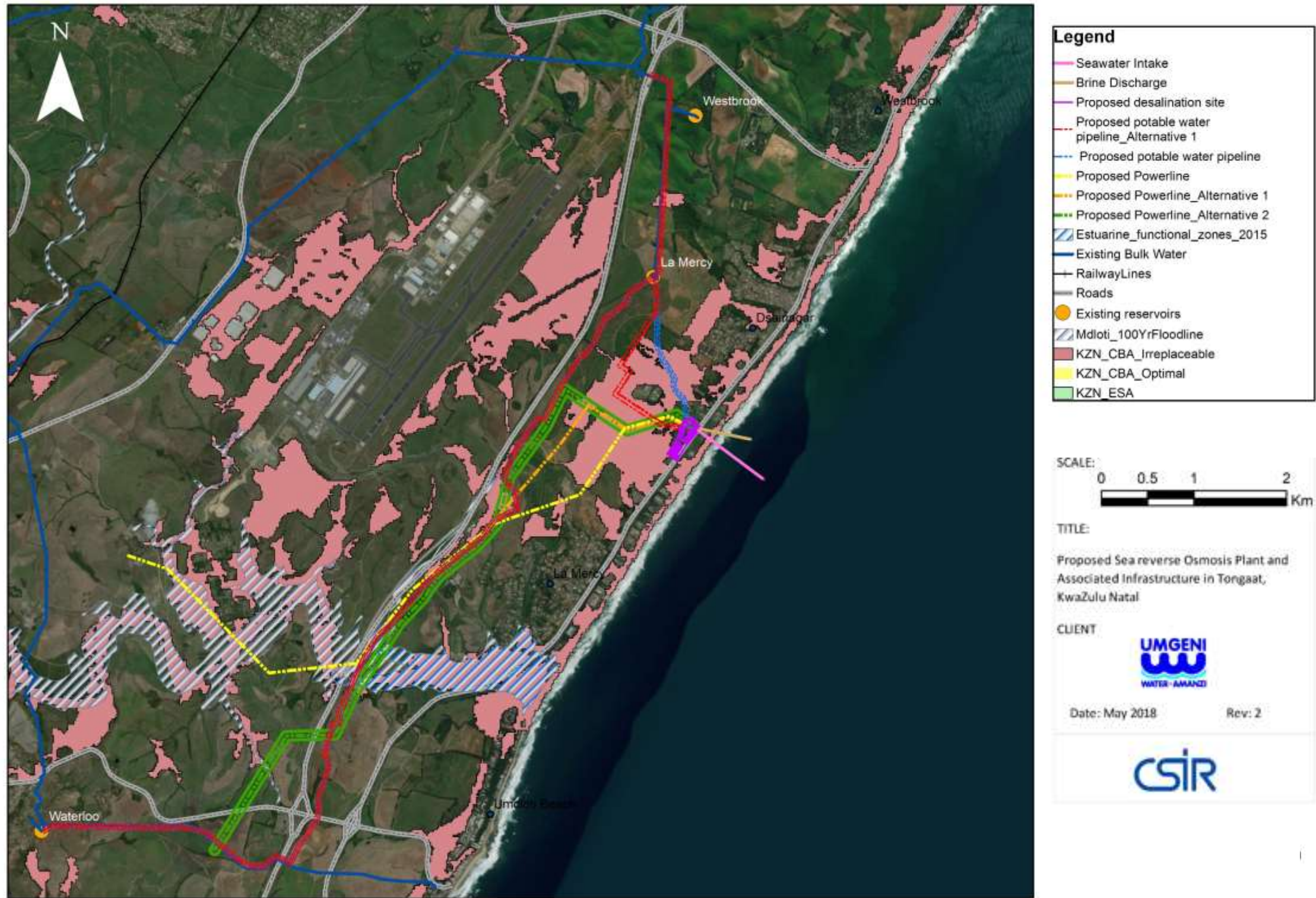
Map 3: Landcover (SANBI)



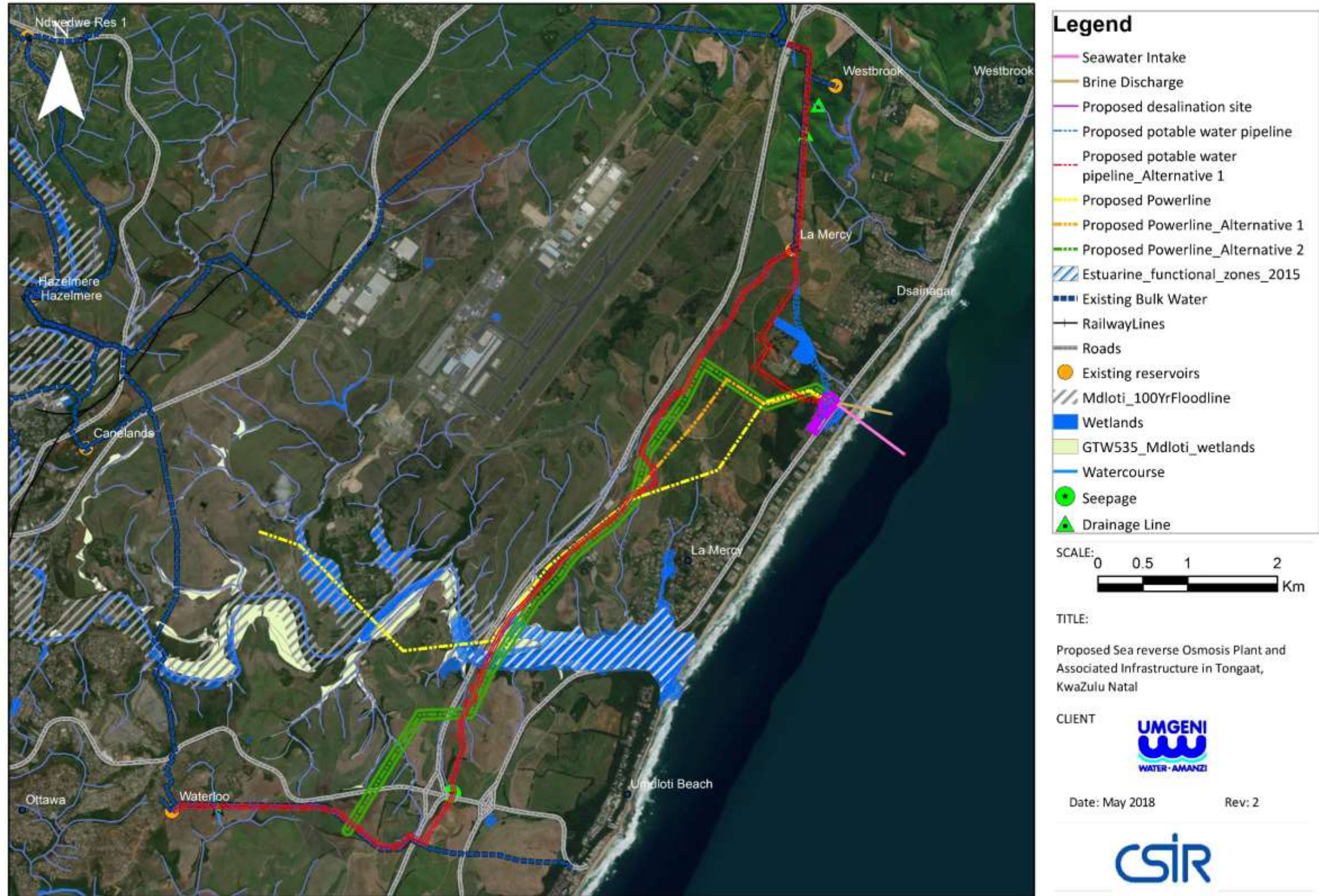
Map 4: Proposed project in relation to vegetation types and remaining Threatened ecosystems



Map 5: Proposed project in relation to CBA as defined in the EKZNW Terrestrial Systematic Conservation Plan (2010)



Map 6: Proposed project in relation to CBA as defined in the EKZNW Terrestrial Systematic Conservation Plan (2016)



Map 7: Proposed project in relation with aquatic features