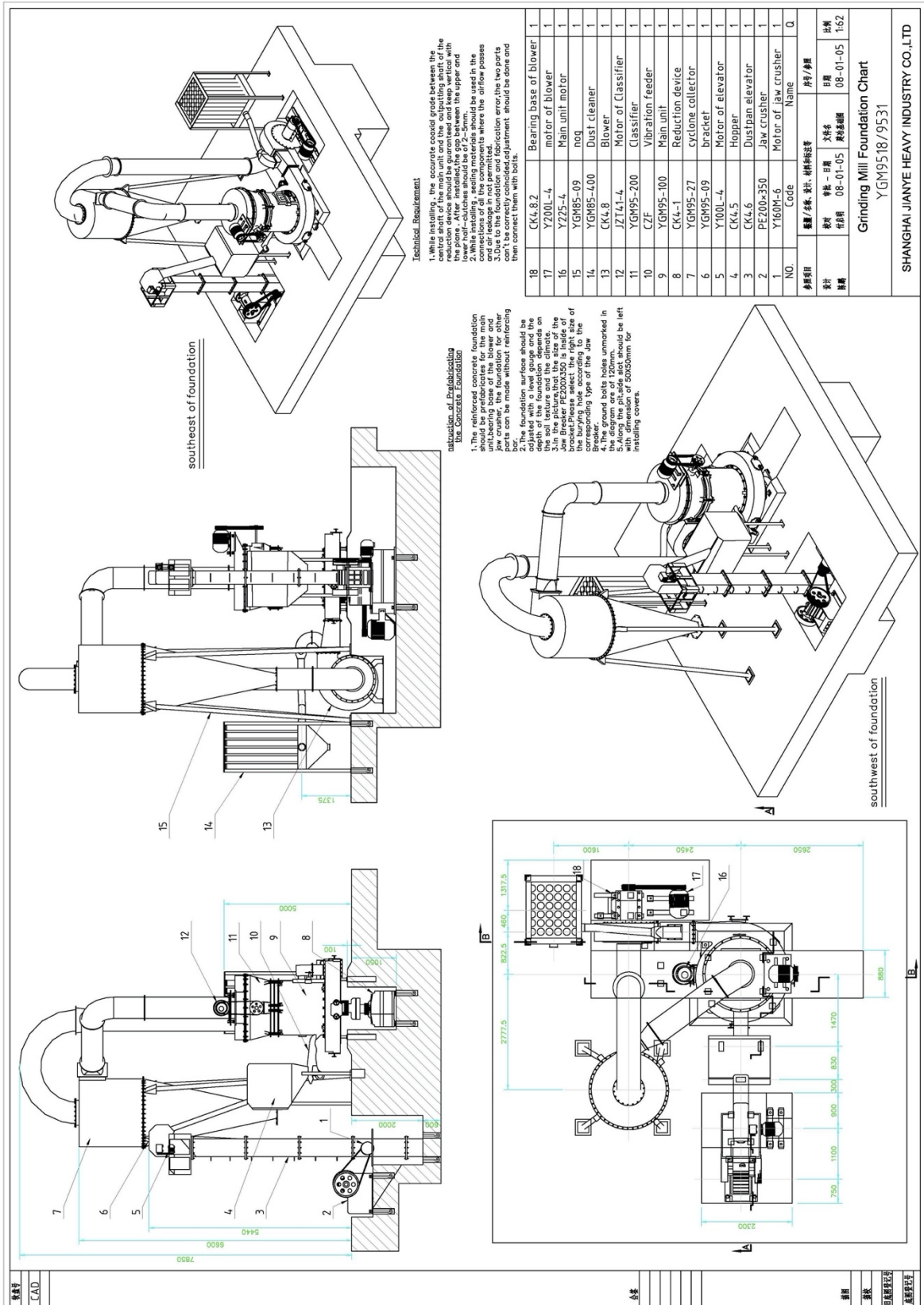
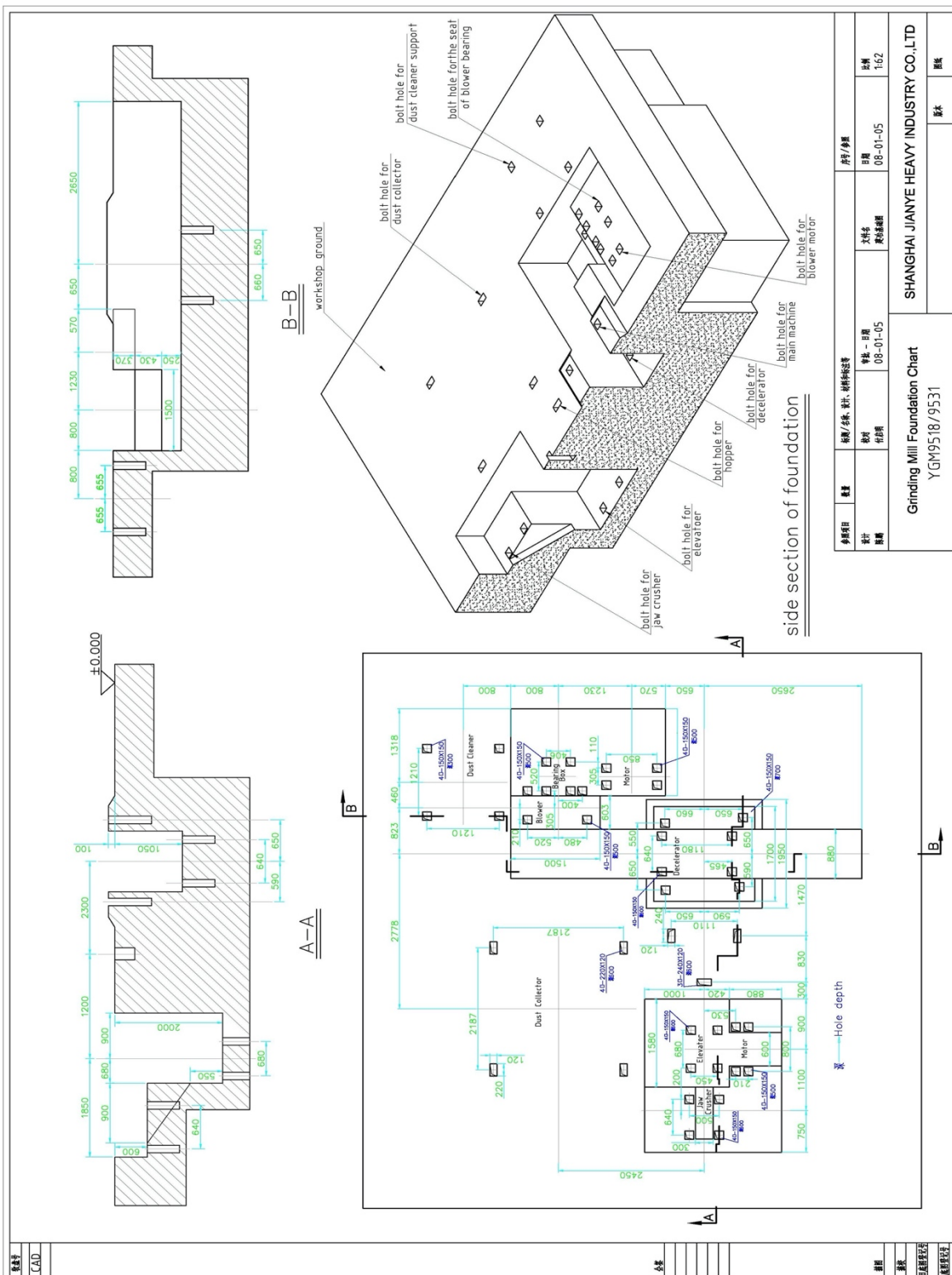
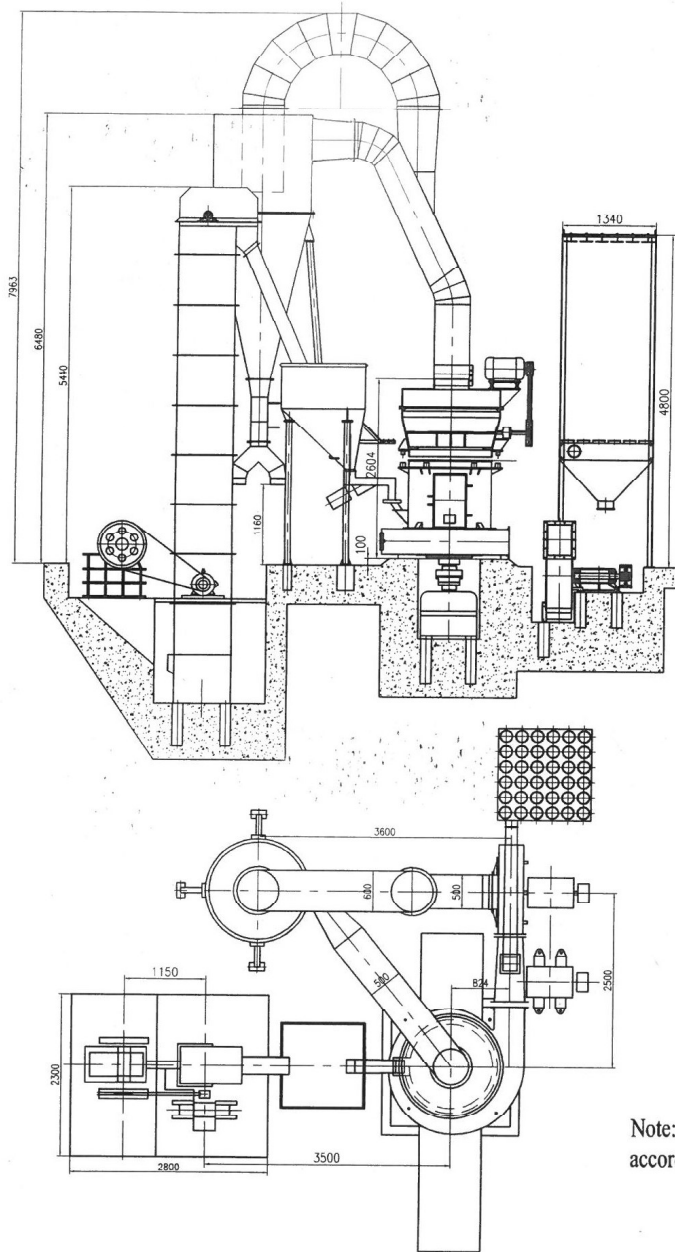


3D Viewing drawing





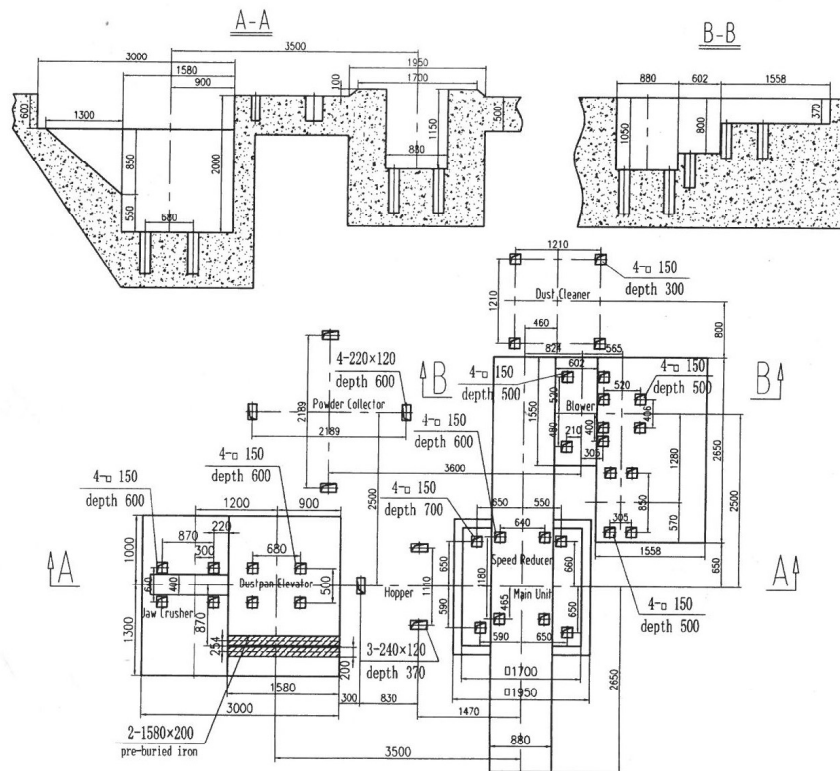


Instruction of Prefabricating the Concrete Foundation

- 1 The reinforced concrete foundation should be prefabricated for the main unit, bearing base of the blower and jaw crusher, the remaining foundation can be made without reinforcing bar.
- 2 The foundation surface should be adjusted with a level gauge, and the depth of the foundation should be 100-300mm deeper than that of the corresponding bolt hole, the specific situation depends on the local soil texture and the climate.
- 3 The foundation size of jaw crusher in the drawing is for PE-250*400. Please select the right size of the prepared hole according to the corresponding type of the Jaw Breaker.
- 4 Edge slot of 50*50mm should be preset along the edge of the pit for installing covers.

Technical Requirement

- 1 When establishing the plant, a crane of the capacity 3tons should be hanged above the main machine for maintenance use.
- 2 While installing, the central shaft of the main unit and the output shaft of the speed reducer have a precise coaxiality and are vertical with the horizontal plane. After assembly, the gap between the upper and lower half-coupling should be about 2-5 mm.
- 3 While installing, sealing materials should be used in the connections of all the components where the airflow passes, and air leakage is not permitted.
- 4 When two parts can't be correctly coincided due to the foundation and fabrication error, please adjust local parts and then connect them with bolts.



Note: the foundation of jaw crusher should be decided according to the machine model in the actual situation.

High Pressure Grinding Mill YGM 9518

Exterior and Foundation Installation Chart

Designer		Proportion	1:65
Drawing		Date	
Shanghai Jianye Heavy Industry Co.,Ltd			